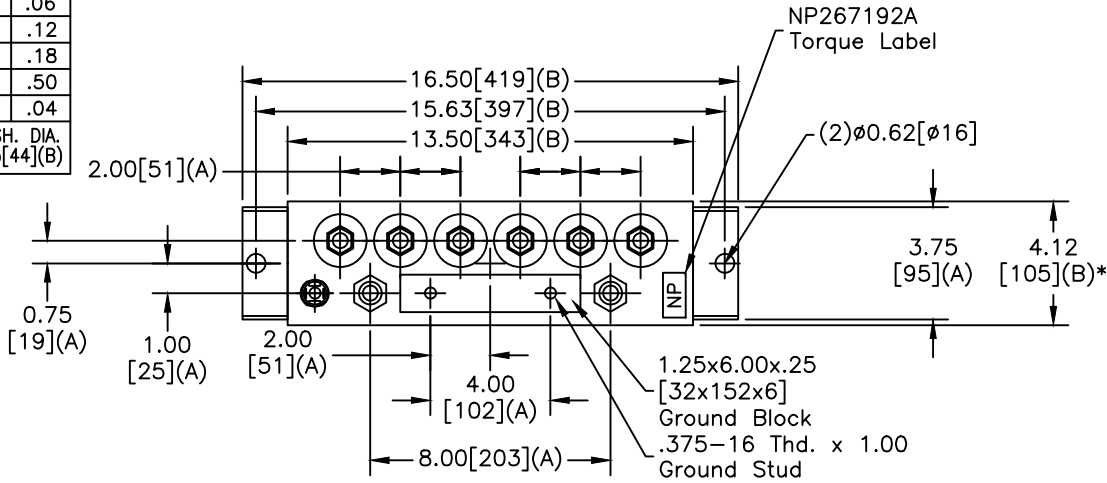
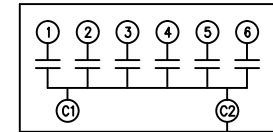
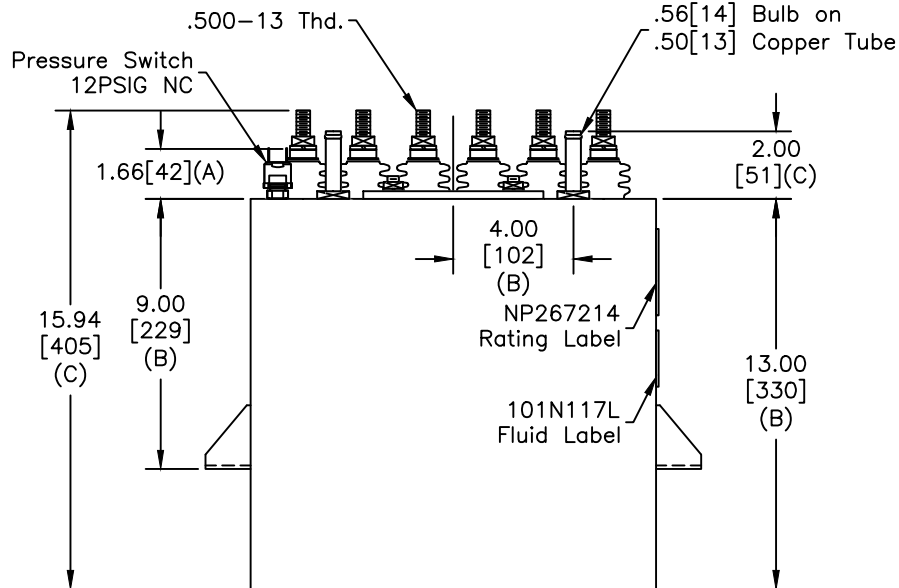


SIZE A	DWG NO 19L0025WH4	SHT 2	REV 2
REV 2	DESCRIPTION UPDATE NAMEPLATES	DATE 6/3/2014	APPROVED JBC

TOL	+/-
A	.06
B	.12
C	.18
D	.50
E	.04
BUSH. DIA.	1.75[44](B)



TERM	uF	kVAR
1	5.18	208.3
2	5.18	208.3
3	5.18	208.3
4	5.18	208.3
5	5.18	208.3
6	5.18	208.3



GE CAPACITOR
NO INTERNAL DISCHARGE RESISTORS

CAT. 19L0025WH4 SN
1250KVAR 800V 10000HZ 1PH
6x5.18UF/TAP
1.46 GAL. COMBUSTIBLE LIQUID
CAUTION! BEFORE INSTALLING OR
OPERATING READ GEH-2733

MADE IN USA NP267214

* UP TO +.50[13] CASE BULGE

MAX. TERMINAL TIGHTENING TORQUE 15 FT-LBS.

NP267192A

GE ENERGY FORT EDWARD, N.Y., U.S.A.	SIZE A	Est Weight 44 lbs.	<h1>OUTLINE</h1> <h1>19L0025WH4</h1>	
	DRAWN E.McGINN ISSUED			

DISTR. TO