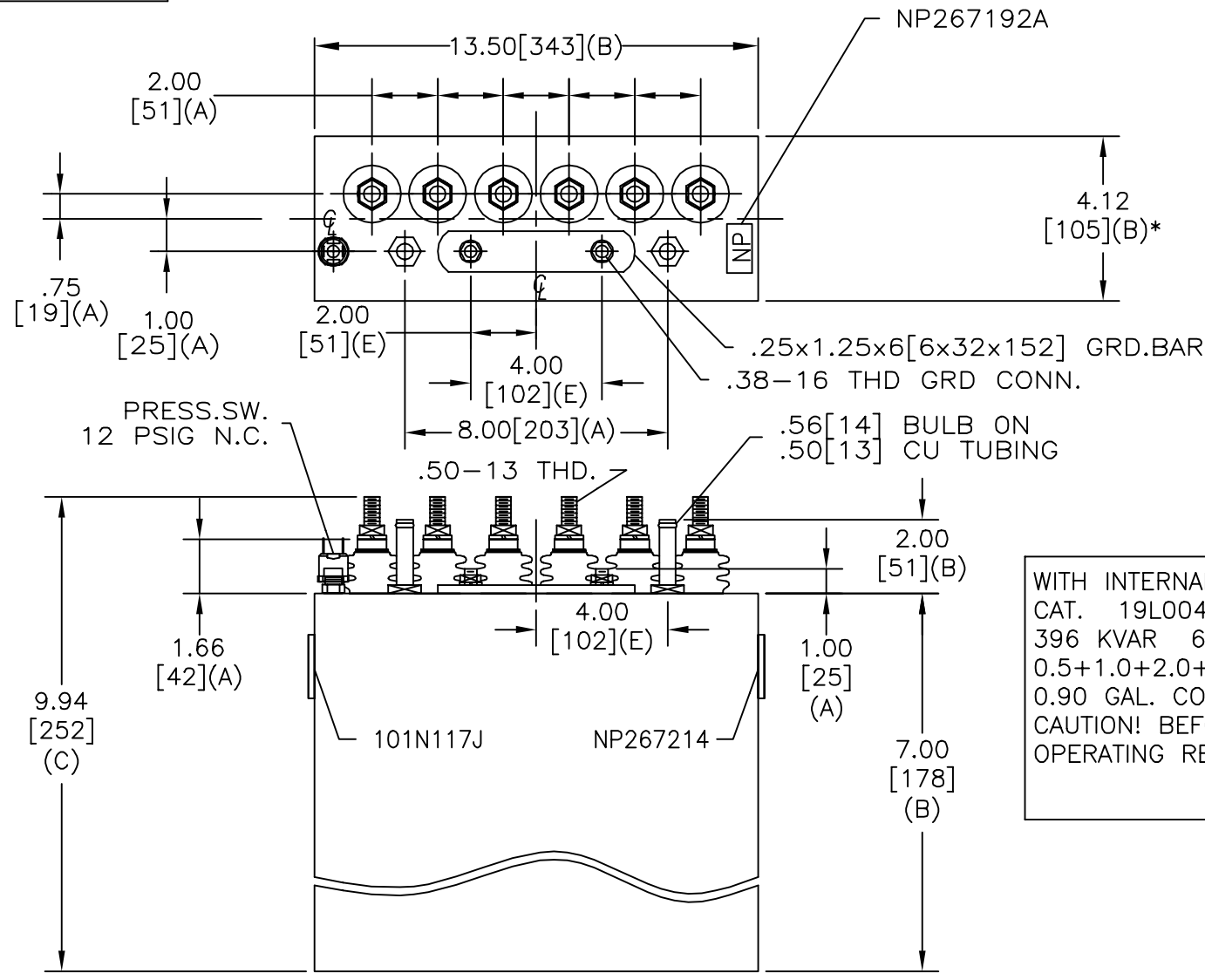
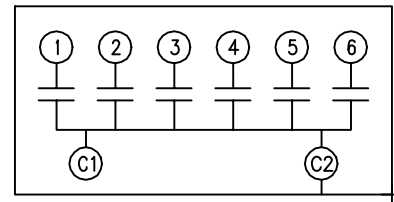


SIZE A	DWG NO 19L0044WH2	SHT 2	REV 1
REV 1	DESCRIPTION DEL 180619	DATE 8/21/02	APPROVED BTR

TOL	+/-	BUSH. DIA.
A	.06	1.75[44](B)
B	.12	
C	.18	
D	.50	
E	.04	



TERM	uF	kVAR
1	0.5	11.31
2	1.0	22.62
3	2.0	42.24
4	4.0	90.48
5	4.0	90.48
6	6.0	135.7



SCHEMATIC DIAGRAM - 601

WITH INTERNAL DISCH RESISTORS
 CAT. 19L0044WH3 SN
 396 KVAR 600V 10000 HZ 1 PH
 0.5+1.0+2.0+2x4.0+6.0 UF/TAP
 0.90 GAL. COMBUSTIBLE LIQUID
 CAUTION! BEFORE INSTALLING OR
 OPERATING READ GEH-2733

NP267214

* UP TO +.50[13]
 CASE BULGE

MAX. TERMINAL
 TIGHTENING TORQUE
 15 FT-LBS

NP267192A

	INDUSTRIAL SYSTEMS FORT EDWARD, N.Y., U.S.A.		SIZE A
	DRAWN B.ROSS	DATE JUN 3, 2002	SCALE
ISSUED	DATE 6/19/02		

OUTLINE 19L0044WH2	
SHEET 2	CONT ON -

DISTR. TO