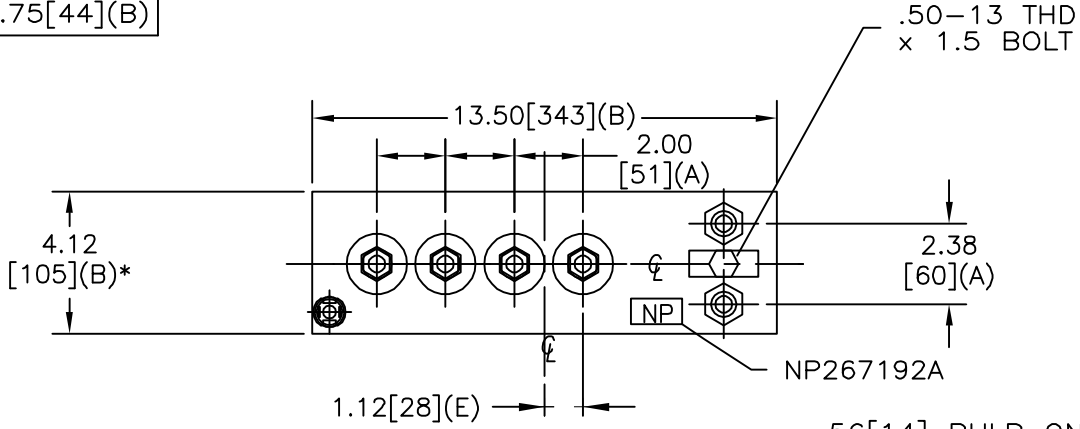
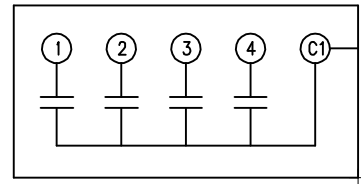
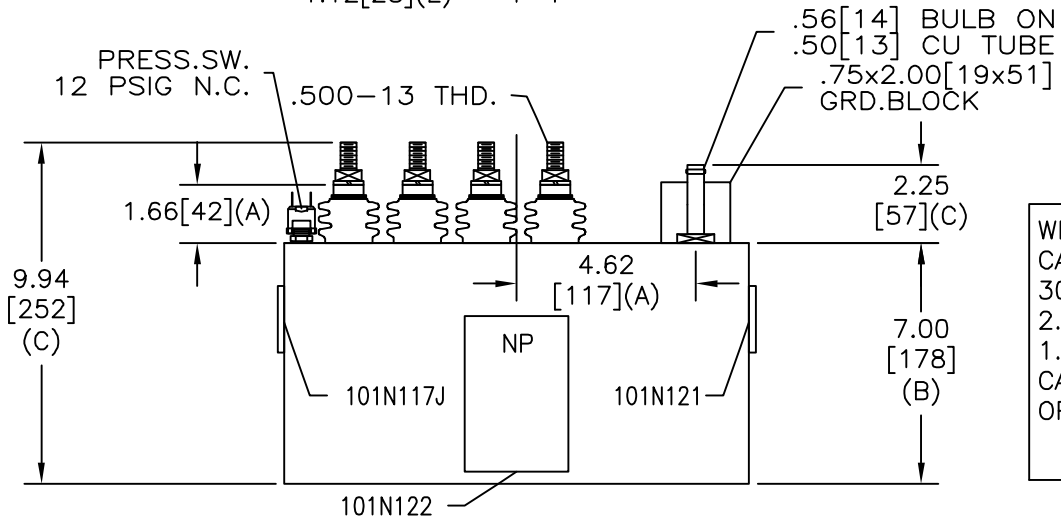


SIZE A	DWG NO	SHT 2	REV
REV	DESCRIPTION	DATE	APPROVED

TOL	+/-	BUSH. DIA.
A	.06	1.75[44](B)
B	.12	
C	.18	
D	.50	
E	.04	



TERM	uF	kVAR
1	2.72	20
2	5.43	40
3	10.86	80
4	21.73	160



SCHEMATIC DIAGRAM - 401


WITH INTERNAL DISCH RESISTORS
 CAT. 19L0074WH2 SN
 300KVAR 625V 3000HZ 1PH
 2.72+5.43+10.86+21.73 UF/TAP
 1.00 GAL. COMBUSTIBLE LIQUID
 CAUTION! BEFORE INSTALLING OR
 OPERATING READ GEH-2733

NP267214

* UP TO +.50[13]
 CASE BULGE

MAX. TERMINAL
 TIGHTENING TORQUE
 15 FT-LBS

NP267192A

 INDUSTRIAL SYSTEMS FORT EDWARD, N.Y., U.S.A.		SIZE A	<h1>OUTLINE</h1> <h2>19L0074WH2</h2>
DRAWN B. Ross	DATE OCT. 22, 2002	SCALE	
ISSUED	DATE	SHEET 2	CONT ON -

DISTR. TO