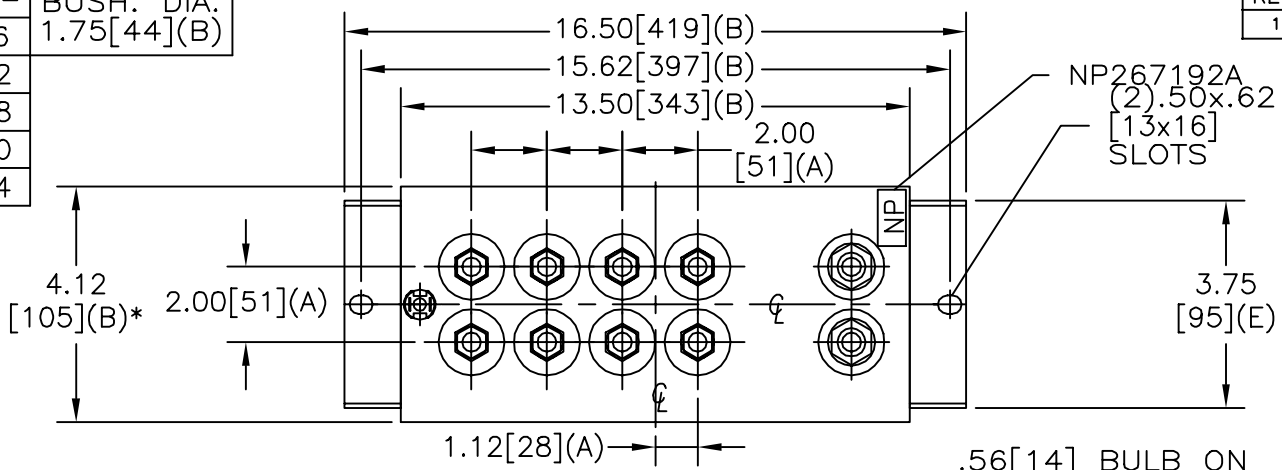
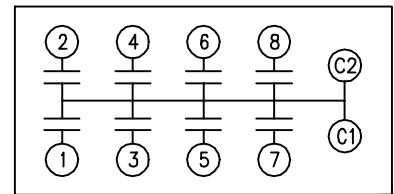


SIZE A	DWG NO 19L0204WH4	SHT 2	REV 1
REV 1	DESCRIPTION	DATE	APPROVED
1	UPDATE CAT NO.	9/25/02	BROSS

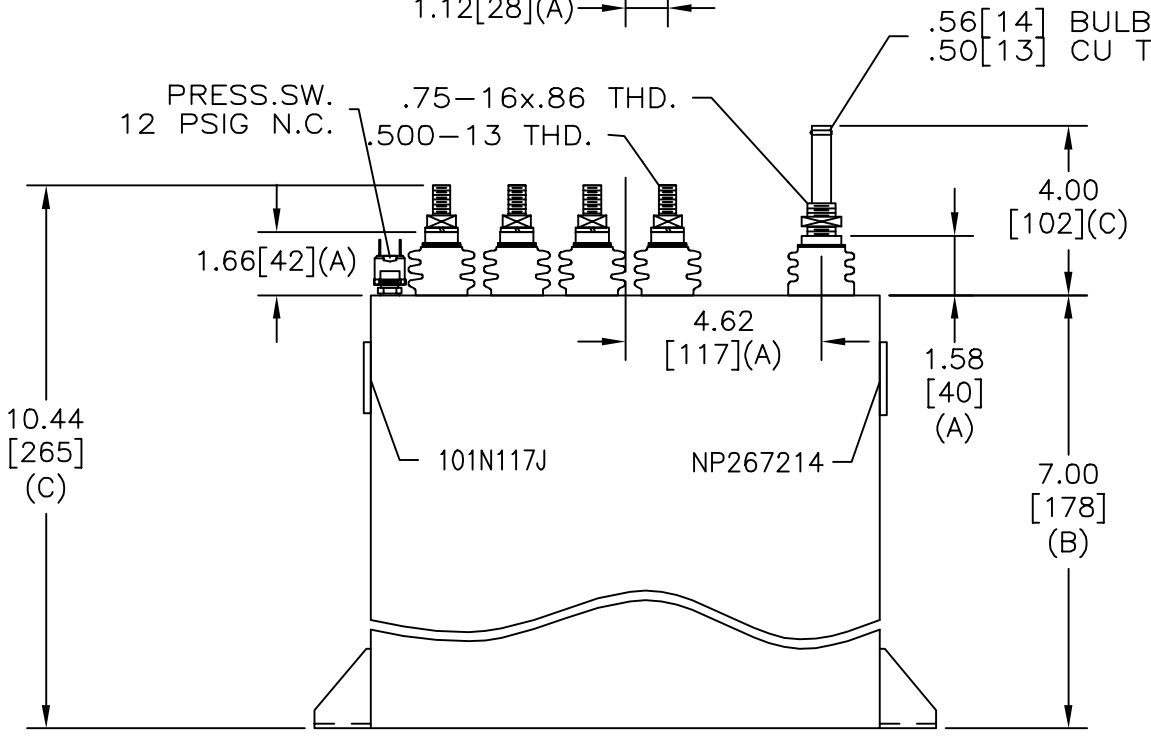
TOL	+/-	BUSH. DIA.
A	.06	1.75[44](B)
B	.12	
C	.18	
D	.50	
E	.04	



TERM	uF	kVAR
1	3.89	125
2	3.89	125
3	3.89	125
4	3.89	125
5	3.89	125
6	3.89	125
7	3.89	125
8	3.89	125



SCHEMATIC DIAGRAM - 800



NO INTERNAL DISCH RESISTORS  
 CAT. 19L0204WH4 SN  
 1000KVAR 800V 8000HZ 1PH  
 8x3.89 UF/TAP  
 0.95 GAL. COMBUSTIBLE LIQUID  
 CAUTION! BEFORE INSTALLING OR  
 OPERATING READ GEH-2733

NP267214

\* UP TO +.50[13]  
 CASE BULGE

MAX. TERMINAL  
 TIGHTENING TORQUE  
 15 FT-LBS

NP267192A

	INDUSTRIAL SYSTEMS FORT EDWARD, N.Y., U.S.A.		SIZE A
	DRAWN E. McGinn	DATE NOV. 13, 1997	SCALE
ISSUED	DATE 11-19-02		

OUTLINE 19L0204WH4	
SHEET 2	CONT ON -

DISTR. TO