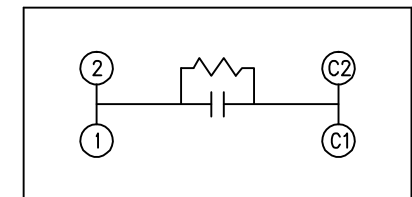
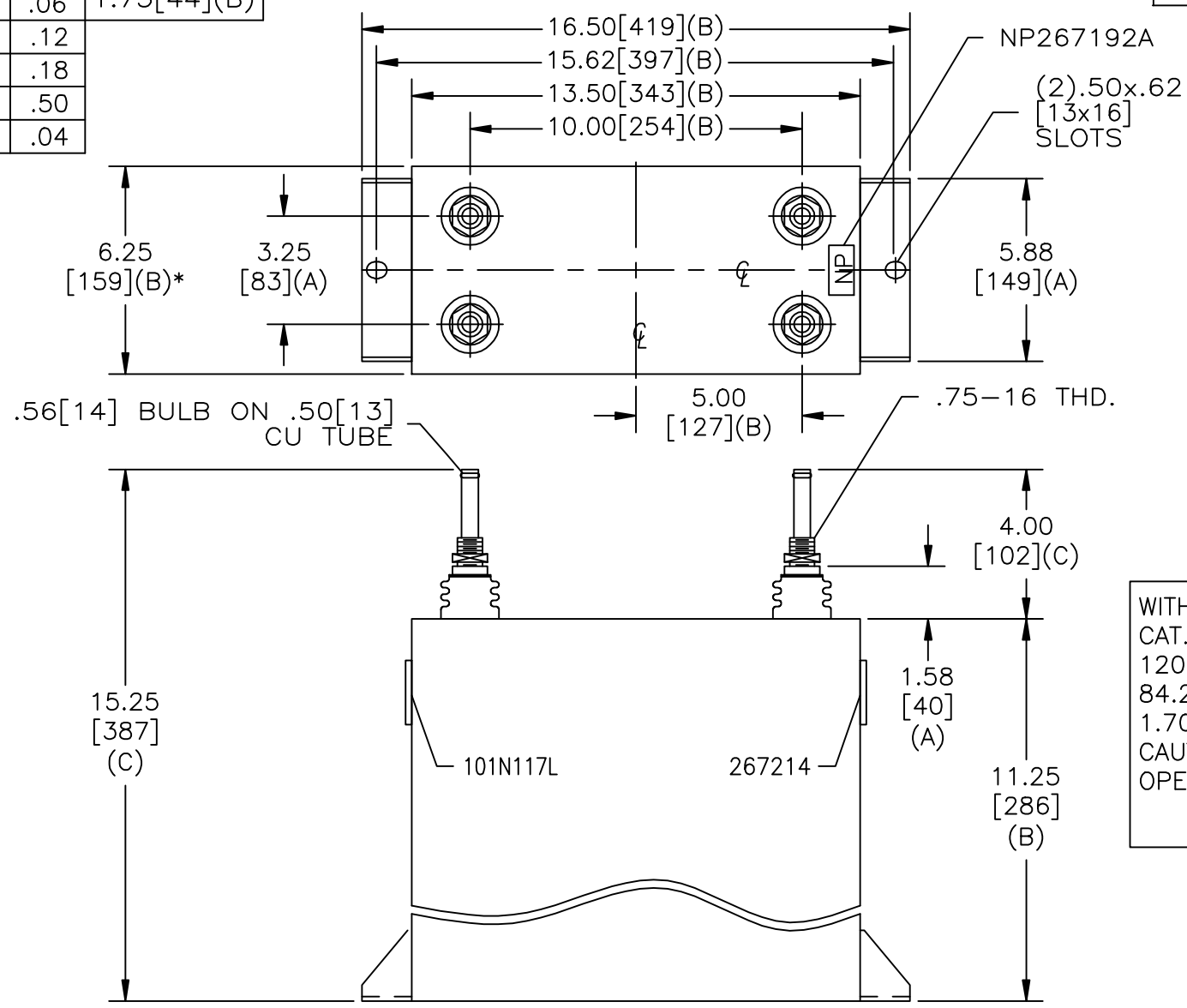


SIZE A	DWG NO 19L0415WH3	SHT 2	REV
REV	DESCRIPTION	DATE	APPROVED

TOL	+/-	BUSH. DIA.
A	.06	1.75[44](B)
B	.12	
C	.18	
D	.50	
E	.04	



SCHEMATIC DIAGRAM - 107

WITH INTERNAL DISCH RESISTORS
 CAT. 19L0415WH43 SN
 1200 VAR 1800V 700HZ 1PH
 84.2 UF
 1.70 GAL. COMBUSTIBLE LIQUID
 CAUTION! BEFORE INSTALLING OR
 OPERATING READ GEH-2733
 NP267214

* UP TO +.50[13]
 CASE BULGE

MAX. TERMINAL
 TIGHTENING TORQUE
 15 FT-LBS
 NP267192A

GE ENERGY FORT EDWARD, N.Y., U.S.A.	SIZE A	<h1>OUTLINE</h1> <h2>19L0415WH3</h2>	DISTR. TO
	DRAWN B. ROSS DATE OCT 15, 2003		
ISSUED	DATE		