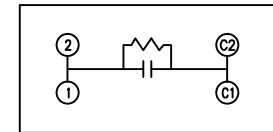
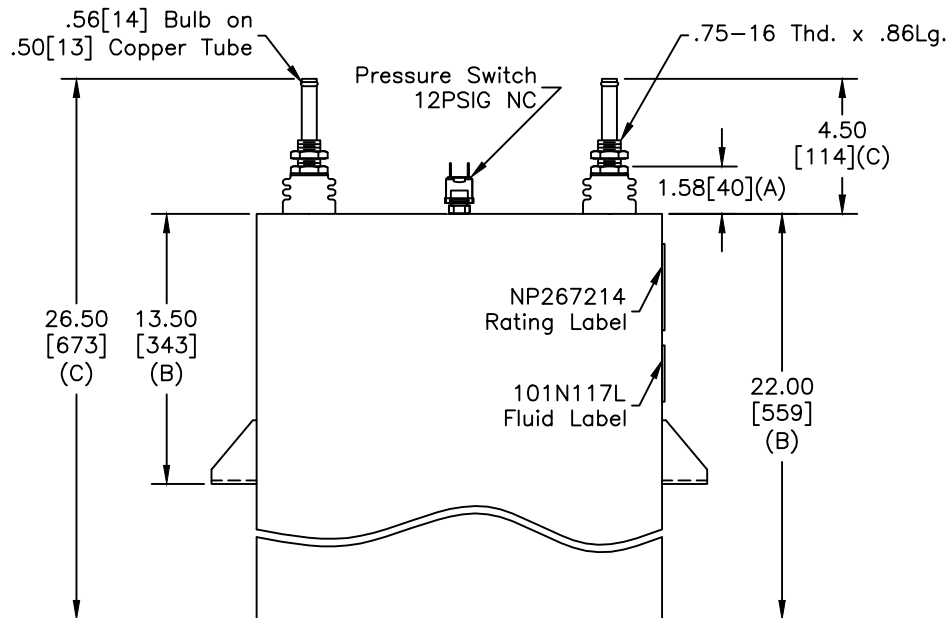
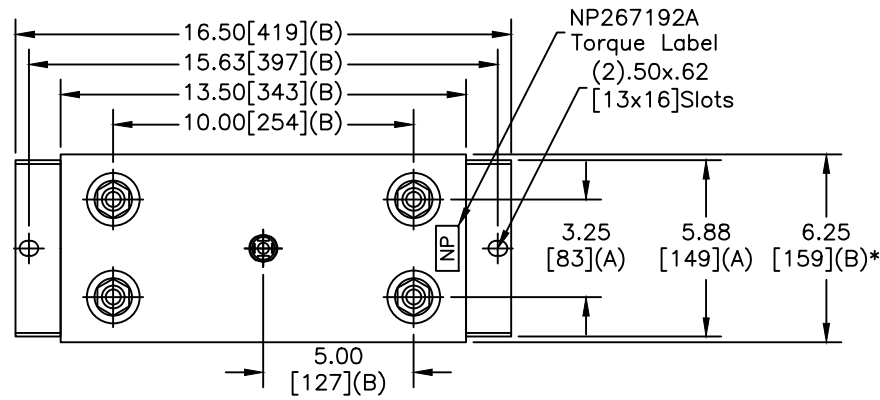


TOL	+/-
A	.06
B	.12
C	.18
D	.50
E	.04
BUSH. DIA.	1.75[44](B)

SIZE	DWG NO	SHT	REV
A	19L0457WH4	2	2
REV	DESCRIPTION	DATE	APPROVED
2	UPDATE NAMEPLATES	1/6/2015	JBC



SCHEMATIC DIAGRAM - 107

**GE CAPACITOR**  
WITH INTERNAL DISCHARGE RESISTORS

CAT. 19L0457WH4 SN  
985KVAR 1800V 200HZ 1PH  
241.9 UF  
2.67 GAL. COMBUSTIBLE LIQUID  
CAUTION! BEFORE INSTALLING OR  
OPERATING READ GEH-2733

MADE IN USA NP267214

\* UP TO +.50[13]  
CASE BULGE

MAX. TERMINAL  
TIGHTENING TORQUE  
15 FT-LBS.

NP267192A

<b>GE ENERGY</b> FORT EDWARD, N.Y., U.S.A.	
DRAWN	EPC
ISSUED	
DATE	11/7/1996
DATE	11/20/1996

SIZE	A
Est Weight	87 lbs.
SCALE	WC1

<b>OUTLINE</b> <b>19L0457WH4</b>	
SHEET	2
CONT	ON 3

DISTR. TO