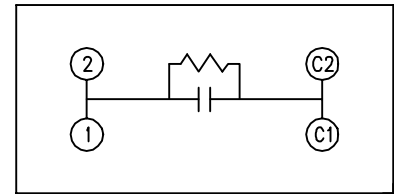
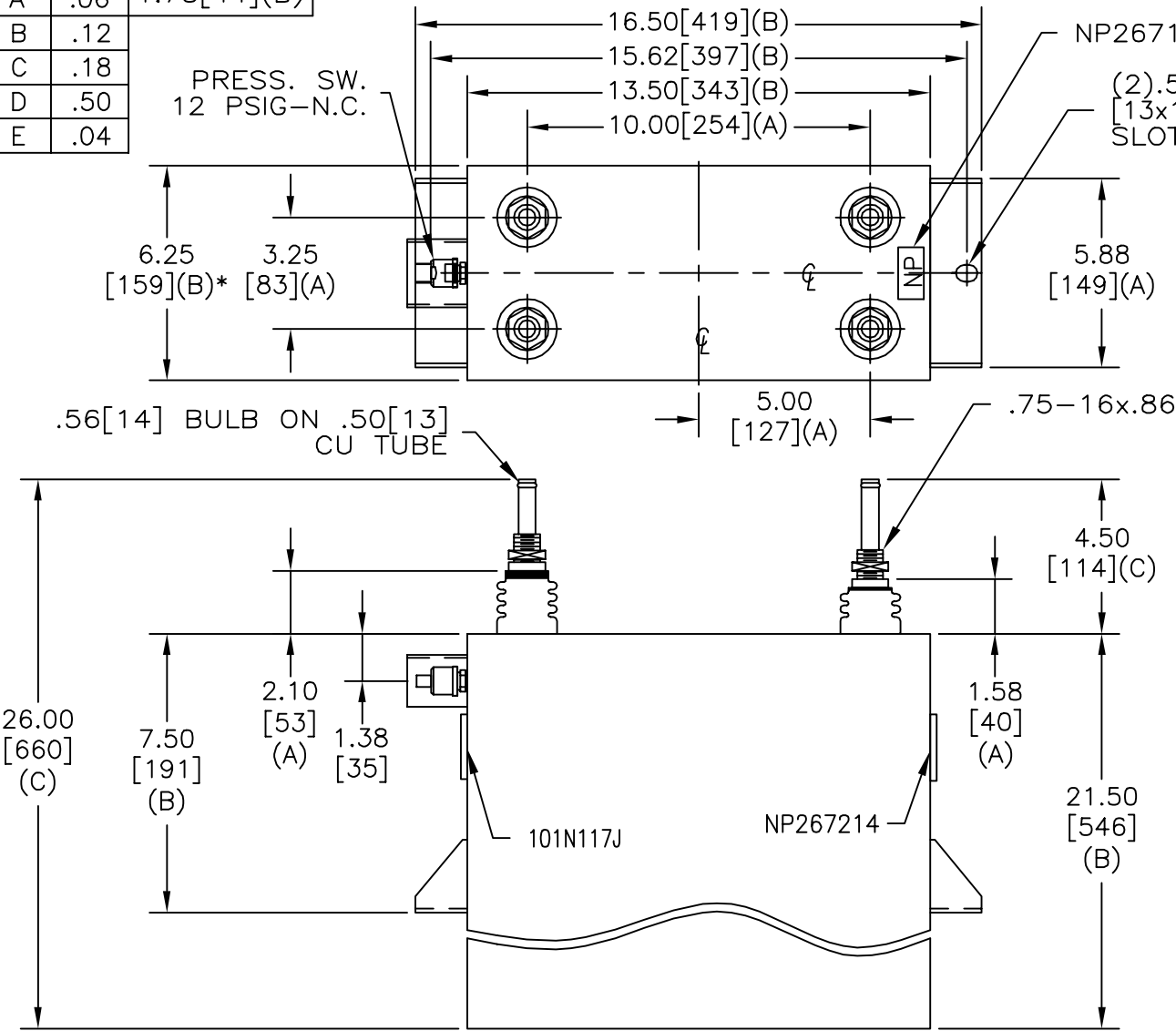


SIZE A	DWG NO 19L0490WH4	SHT 2	REV
REV	DESCRIPTION	DATE	APPROVED

TOL	+/-	BUSH. DIA. 1.75[44](B)
A	.06	
B	.12	
C	.18	
D	.50	
E	.04	



SCHEMATIC DIAGRAM - 107

WITH INTERNAL DISCH RESISTORS
 CAT. 19L0490WH4 SN
 2600KVAR 1500 V 550HZ 1PH
 334.4 UF
 2.57 GAL. COMBUSTIBLE LIQUID
 CAUTION! BEFORE INSTALLING OR
 OPERATING READ GEH-2733

NP267214

* UP TO +.50[13]
 CASE BULGE

MAX. TERMINAL
 TIGHTENING TORQUE
 15 FT-LBS

NP267192A

INDUSTRIAL SYSTEMS FORT EDWARD, N.Y., U.S.A.	SIZE A
	SCALE
DRAWN B. ROSS	DATE FEB 21, 2003
ISSUED	DATE

<h1>OUTLINE</h1> <h2>19L0490WH4</h2>	
SHEET 2	CONT ON 3

DISTR. TO