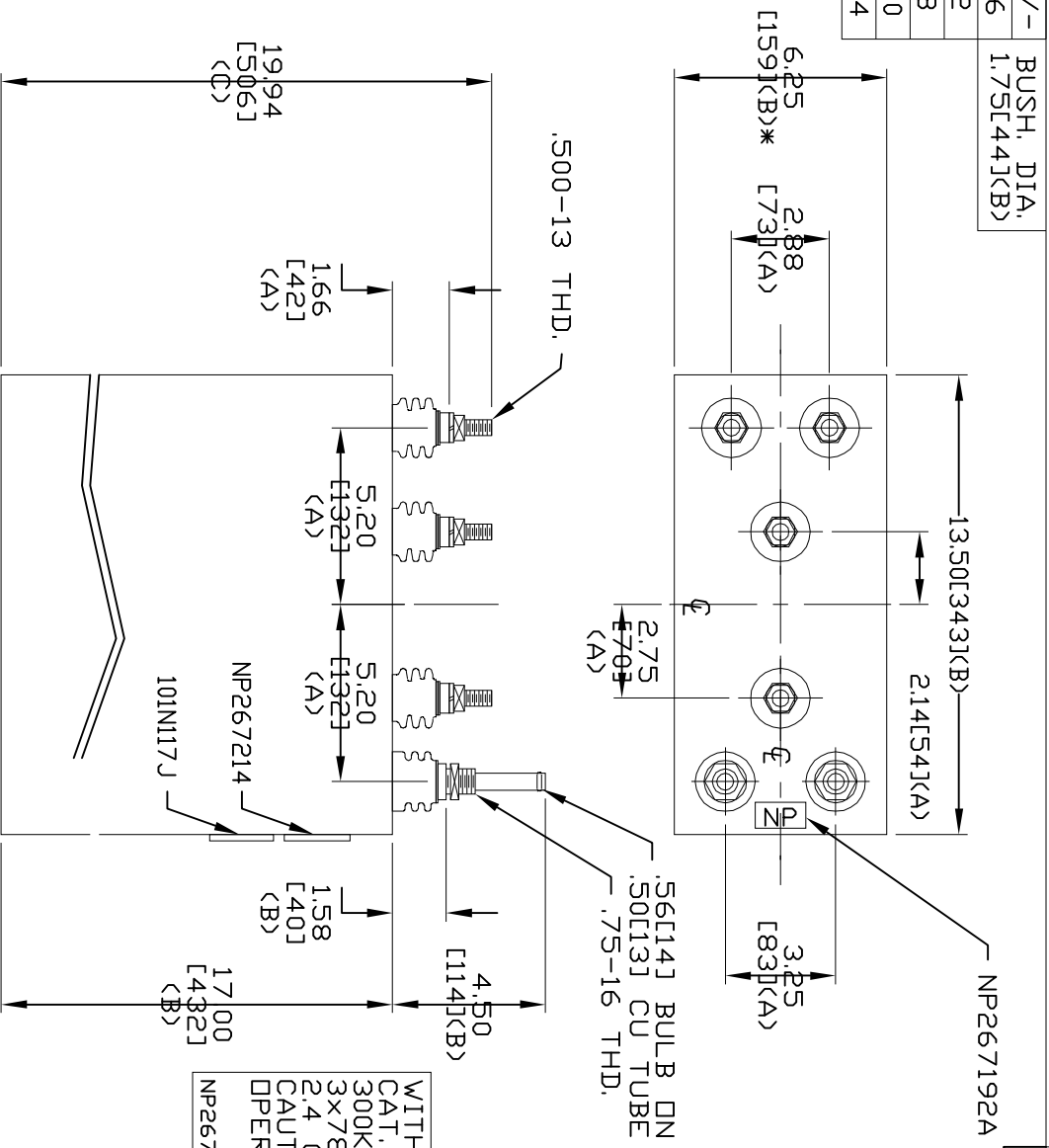
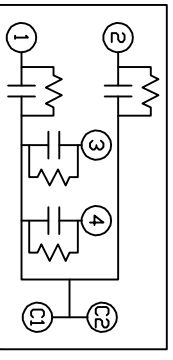


TOL	+/-
A	.06
B	.12
C	.18
D	.50
E	.04



TERM	UF	KVAR
1	78.6	50
2	78.6	50
3	78.6	50
4	235.8	150




SCHEMATIC DIAGRAM - 432

WITH INTERNAL DISCH RESISTORS  
 CAT. 19L0496WH1 SN  
 300KVAR 750V 180HZ 1PH  
 3x78.6+235.8UF/TAP  
 2.4 GAL. COMBUSTIBLE LIQUID  
 CAUTION! BEFORE INSTALLING OR  
 OPERATING READ GEH-2733  
 NP267214

\* UP TO +.50 [1.3]  
 CASE BULGE

MAX. TERMINAL  
 TIGHTENING TORQUE  
 15 FT-LBS  
 NP267192A

SIZE	DWG. NO.	SH	REV
A	19L0496WH1		
REV		DATE	



CAPACITOR & POWER PROTECTION  
 FORT EDWARD, N.Y., U.S.A.

ISSUED

DRAWN E. MCGINN

SEPT. 25, 1996

SIZE

**A**

SCALE

SHEET 2

CDT. 3

OUTLINE

19L0496WH1