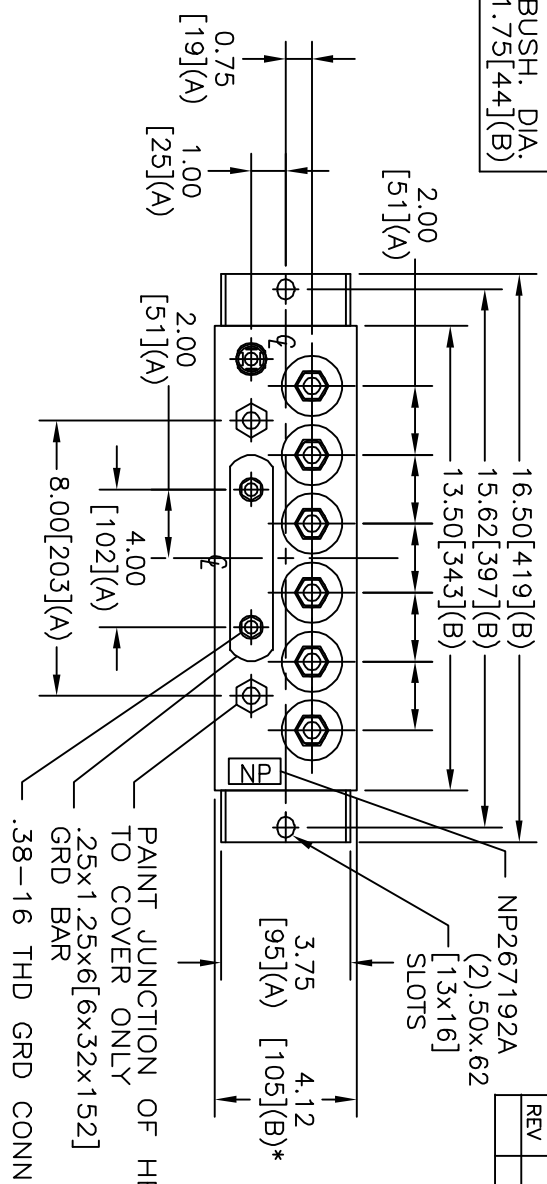
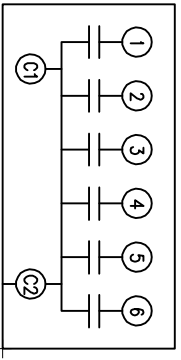


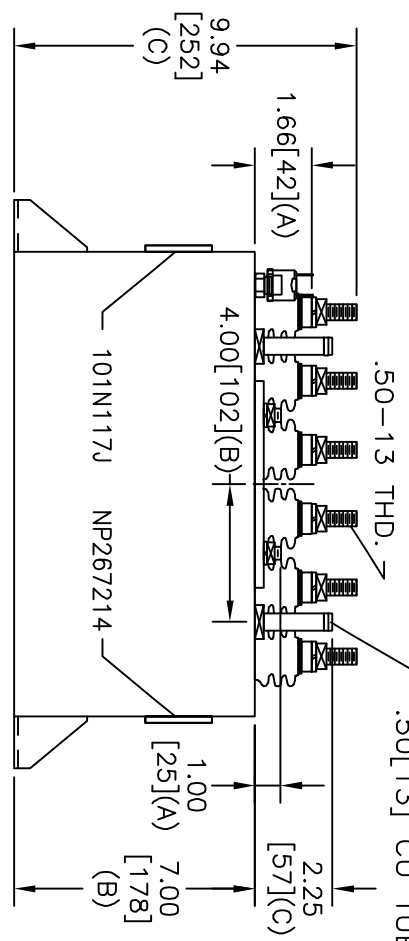
TOL	+/-	BUSH. DIA.
A	.06	1.75[44](B)
B	.12	
C	.18	
D	.50	
E	.04	



TERM	UF	KVAR
1	7.368	166.7
2	7.368	166.7
3	7.368	166.7
4	7.368	166.7
5	7.368	166.7
6	7.368	166.7



SCHEMATIC DIAGRAM - 601



NO INTERNAL DISCH RESISTORS
 CAT. 19L0571WH4 SN
 1000KVAR 600V 10000HZ 1PH
 6x7.368 UF/TAP
 0.90 GAL. COMBUSTIBLE LIQUID
 CAUTION! BEFORE INSTALLING OR
 OPERATING READ GEH-2733
 NP267214

* UP TO +.50 [13]
 CASE BULGE

MAX. TERMINAL
 TIGHTENING TORQUE
 15 FT-LBS
 NP267192A

SIZE	DWG NO	SHT	REV
A	19L0571WH4	2	
REV	DESCRIPTION	DATE	APPROVED

INDUSTRIAL SYSTEMS
 FORT EDWARD, N.Y., U.S.A.

DRAWN B.ROSS
 DATE DEC 9, 2002

ISSUED DATE

SIZE A
 SCALE

SHEET 2 CONT -

OUTLINE
 19L0571WH4