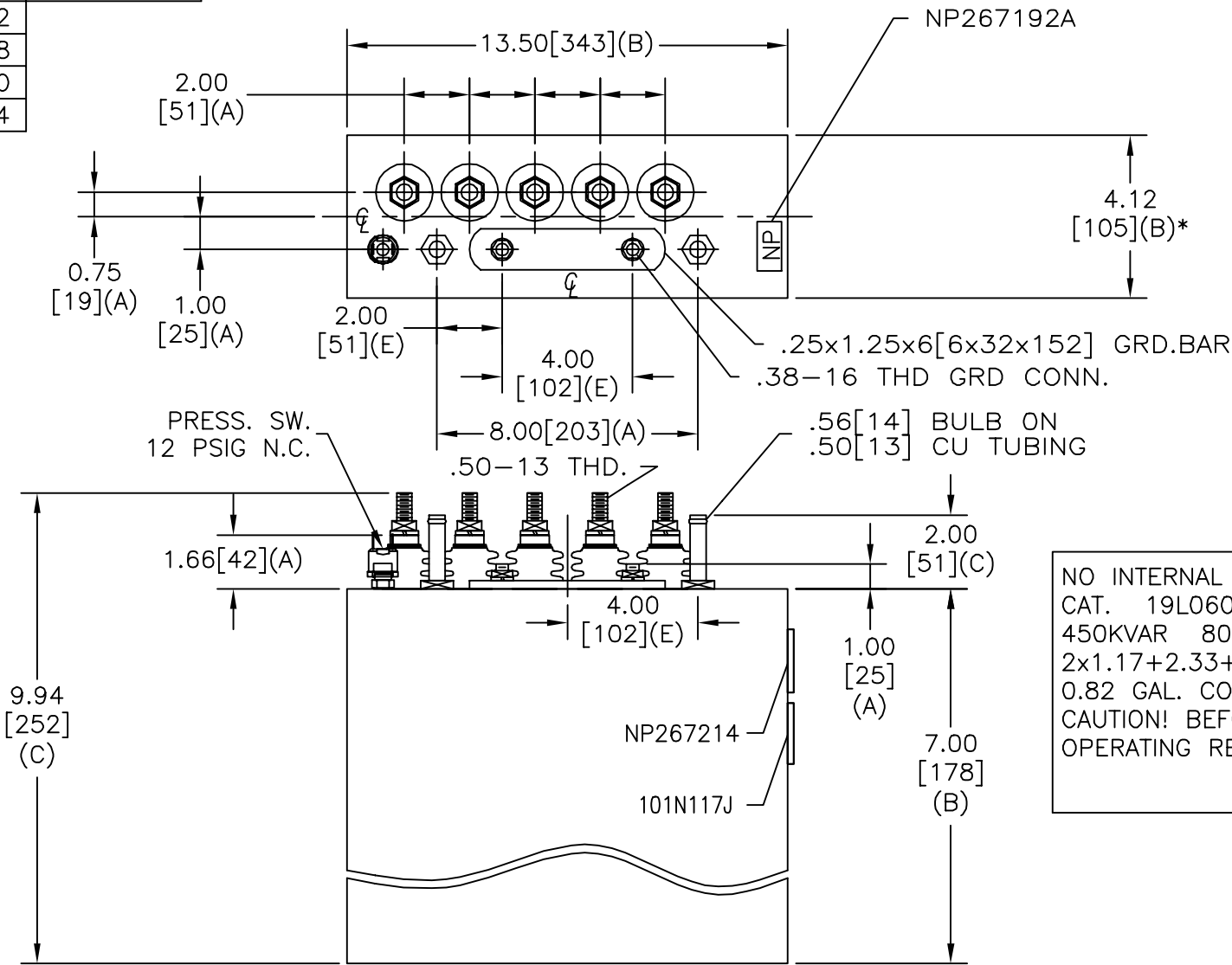
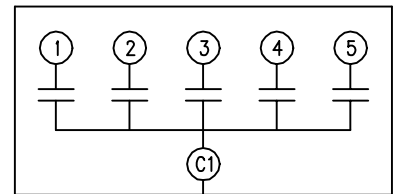


TOL	+/-	BUSH. DIA.
A	.06	1.75[44](B)
B	.12	
C	.18	
D	.50	
E	.04	

SIZE	DWG NO	SHT	REV
A	19L0608WH1	1	1
REV	DESCRIPTION	DATE	APPROVED
1	UPDATE CAT NO	8/28/02	BROSS



TERM	uF	kVAR
1	1.17	45
2	1.17	45
3	2.33	90
4	3.50	135
5	3.50	135



SCHEMATIC DIAGRAM - 501

NO INTERNAL DISCH RESISTORS  
 CAT. 19L0608WH1 SN  
 450KVAR 800V 9600HZ 1PH  
 2x1.17+2.33+2x3.50 UF/TAP  
 0.82 GAL. COMBUSTIBLE LIQUID  
 CAUTION! BEFORE INSTALLING OR  
 OPERATING READ GEH-2733

NP267214

\* UP TO +.50[13]  
 CASE BULGE

MAX. TERMINAL  
 TIGHTENING TORQUE  
 15 FT-LBS

NP267192A

	<b>INDUSTRIAL SYSTEMS</b> <b>FORT EDWARD, N.Y., U.S.A.</b>		SIZE <b>A</b>
	DRAWN E. McGinn	DATE APR. 30, 1997	SCALE
ISSUED	DATE 4-30-97		

**OUTLINE**  
**19L0608WH2**

SHEET 2 CONT ON -

DISTR. TO