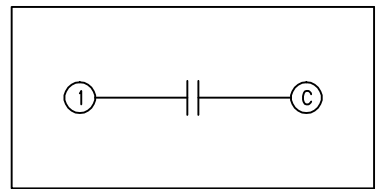
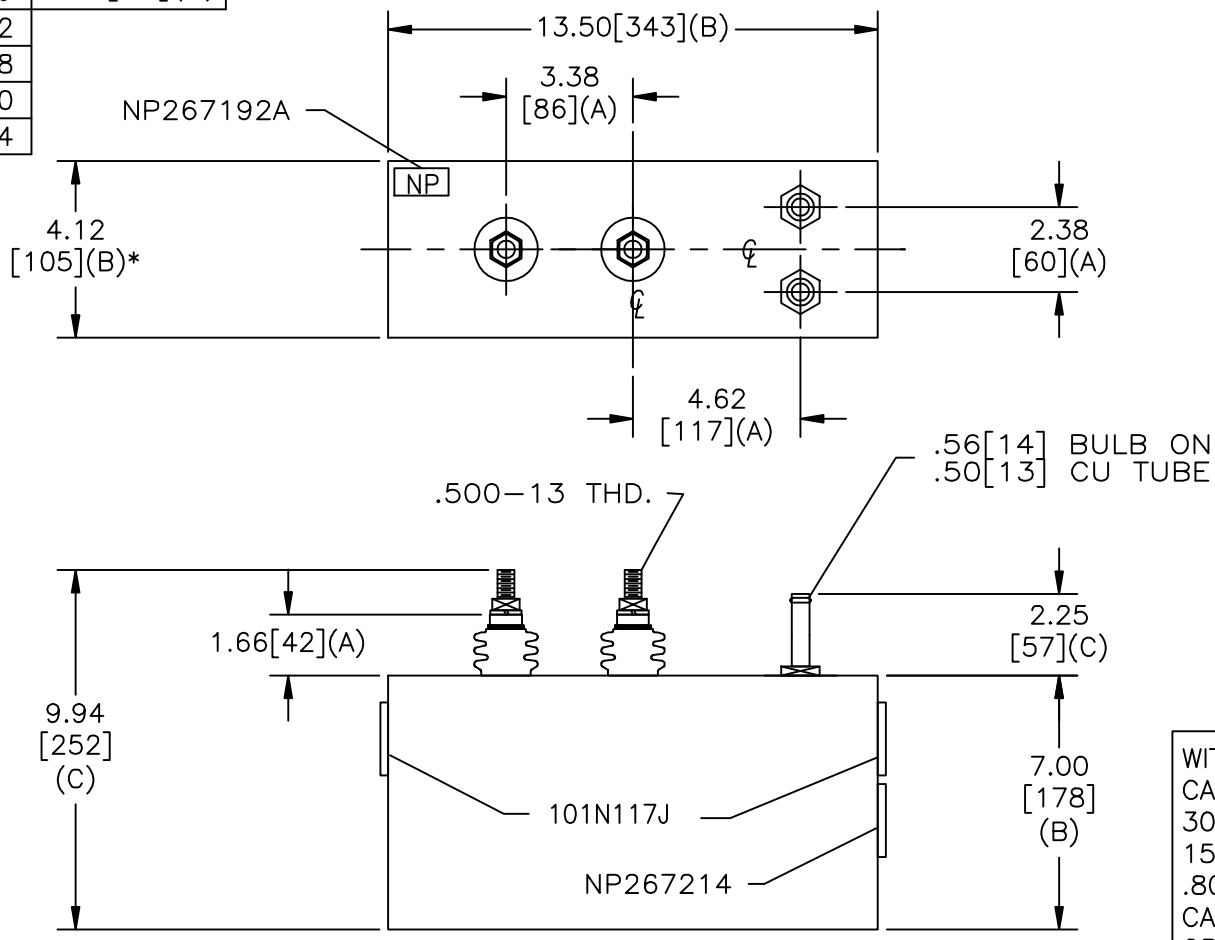


SIZE A	DWG NO 19L0618WH1	SHT 2	REV
REV	DESCRIPTION	DATE	APPROVED

TOL	+/-	BUSH. DIA.
A	.06	1.75[44](B)
B	.12	
C	.18	
D	.50	
E	.04	

TERM	uF	kVAR
1-2	15.3	300



SCHEMATIC DIAGRAM - 100

WITH INTERNAL DISCH RESISTORS
 CAT. 19L0618WH1 SN
 300KVAR 1250V 2000HZ 1PH
 15.3 UF
 .80 GAL. COMBUSTIBLE LIQUID
 CAUTION! BEFORE INSTALLING OR
 OPERATING READ GEH-2733

NP267214

* UP TO +.50[13]
 CASE BULGE

MAX. TERMINAL
 TIGHTENING TORQUE
 15 FT-LBS

NP267192A

INDUSTRIAL SYSTEMS FORT EDWARD, N.Y., U.S.A.	SIZE A	OUTLINE 19L0618WH1
	SCALE	
DRAWN B. ROSS ISSUED	DATE DEC 10, 2003 DATE	SHEET 2 CONT ON -

DISTR. TO