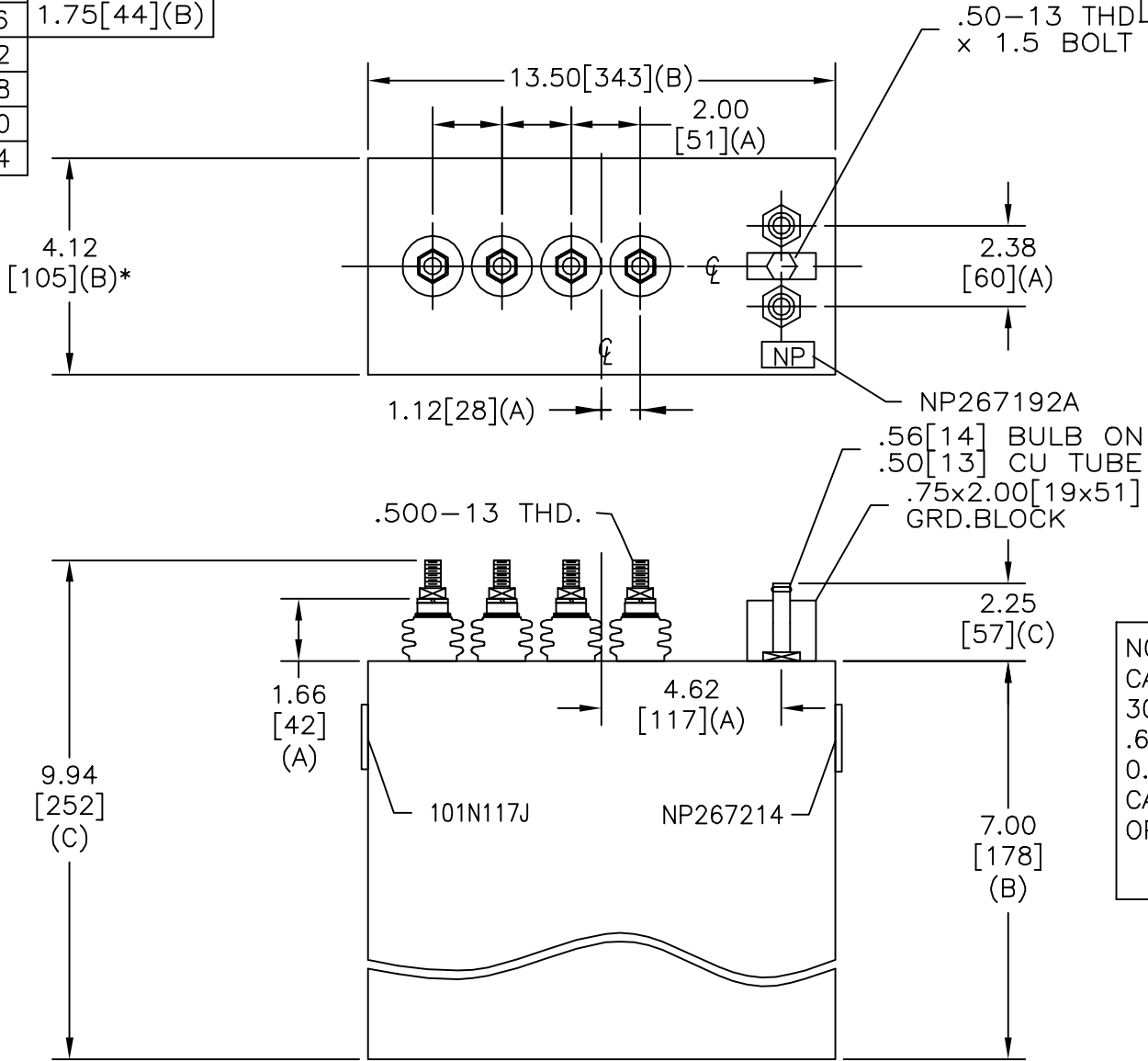
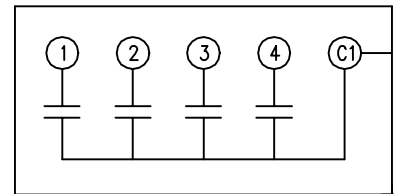


SIZE A	DWG NO 19L0632WH1	SHT 2	REV
REV	DESCRIPTION	DATE	APPROVED

TOL	+/-	BUSH. DIA. 1.75[44](B)
A	.06	
B	.12	
C	.18	
D	.50	
E	.04	



TERM	uF	kVAR
1	.68	20
2	1.36	40
3	2.72	80
4	5.43	160



SCHEMATIC DIAGRAM - 401

NO INTERNAL DISCH RESISTORS
 CAT. 19L0632WH1 SN
 300KVAR 1250 V 3000HZ 1PH
 .68+1.36+2.72+5.43 UF/TAP
 0.87 GAL. COMBUSTIBLE LIQUID
 CAUTION! BEFORE INSTALLING OR
 OPERATING READ GEH-2733

NP267214

* UP TO +.50[13]
 CASE BULGE

MAX. TERMINAL
 TIGHTENING TORQUE
 15 FT-LBS

NP267192A

INDUSTRIAL SYSTEMS FORT EDWARD, N.Y., U.S.A.	SIZE A
	SCALE
DRAWN B. ROSS	DATE AUG 2, 2002
ISSUED	DATE 8/7/02

<h1>OUTLINE</h1> <h2>19L0632WH1</h2>	
SHEET 2	CONT ON -

DISTR. TO