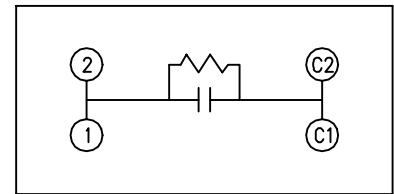
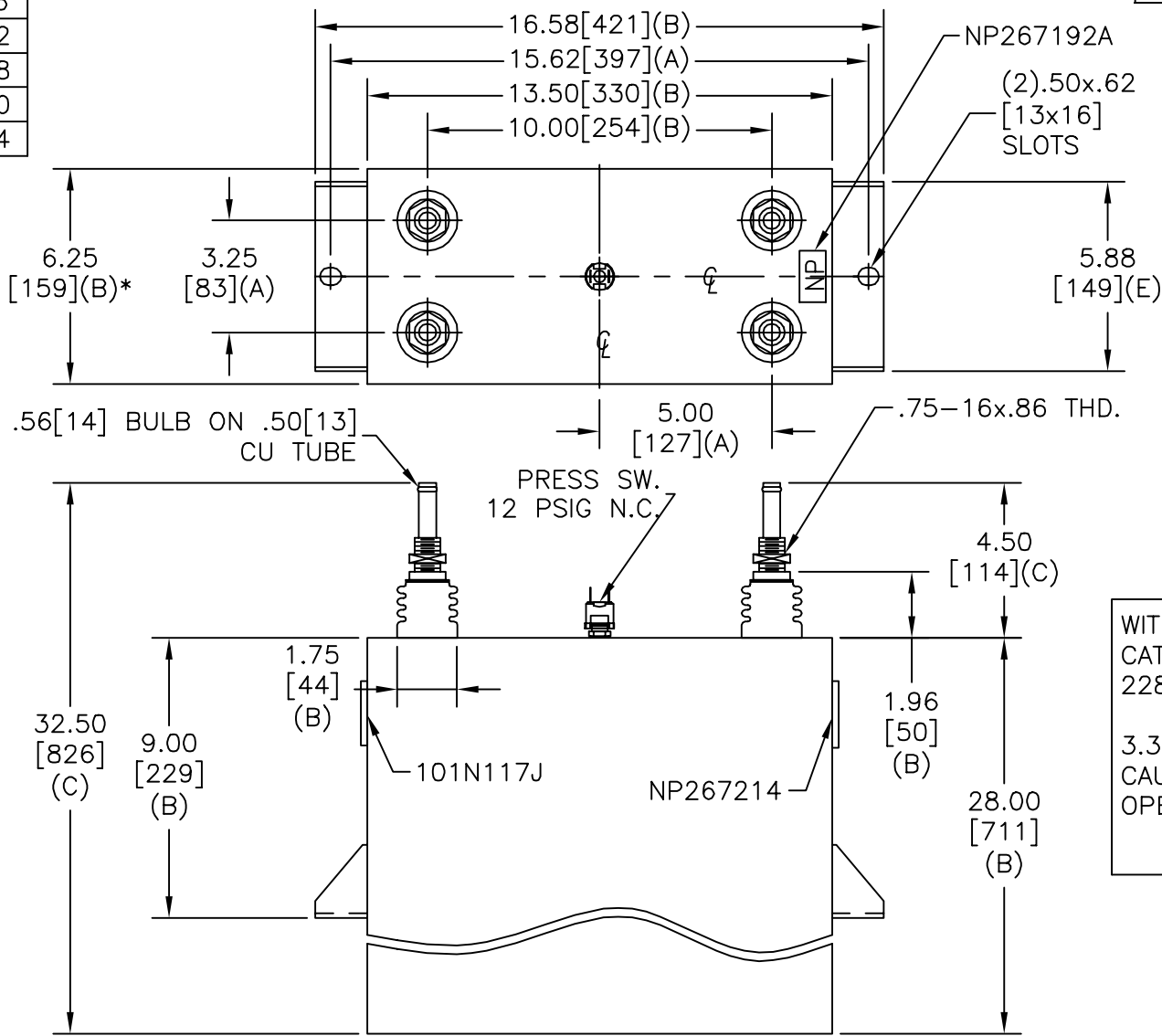


TOL	+/-
A	.06
B	.12
C	.18
D	.50
E	.04

SIZE A	DWG NO 19L0938WH4	SHT 2	REV 1
REV 1	DESCRIPTION RETRACE	DATE 6/18/03	APPROVED BTR



SCHEMATIC DIAGRAM - 107

WITH INTERNAL DISCH RESISTORS
 CAT. 19L0938WH4 SN
 2288KVAR 3200V 400HZ 1PH
 3.32 GAL. COMBUSTIBLE LIQUID
 CAUTION! BEFORE INSTALLING OR
 OPERATING READ GEH-2733
 NP267214

* UP TO +.50[13]
 CASE BULGE

MAX. TERMINAL
 TIGHTENING TORQUE
 15 FT-LBS

NP267192A

INDUSTRIAL SYSTEMS FORT EDWARD, N.Y., U.S.A.		SIZE A
DRAWN	EPC	DATE AUG 29, 1996
ISSUED	NP267192A	DATE 9/4/96

OUTLINE
19L0938WH4

SHEET 2 CONT ON 3

DISTR. TO