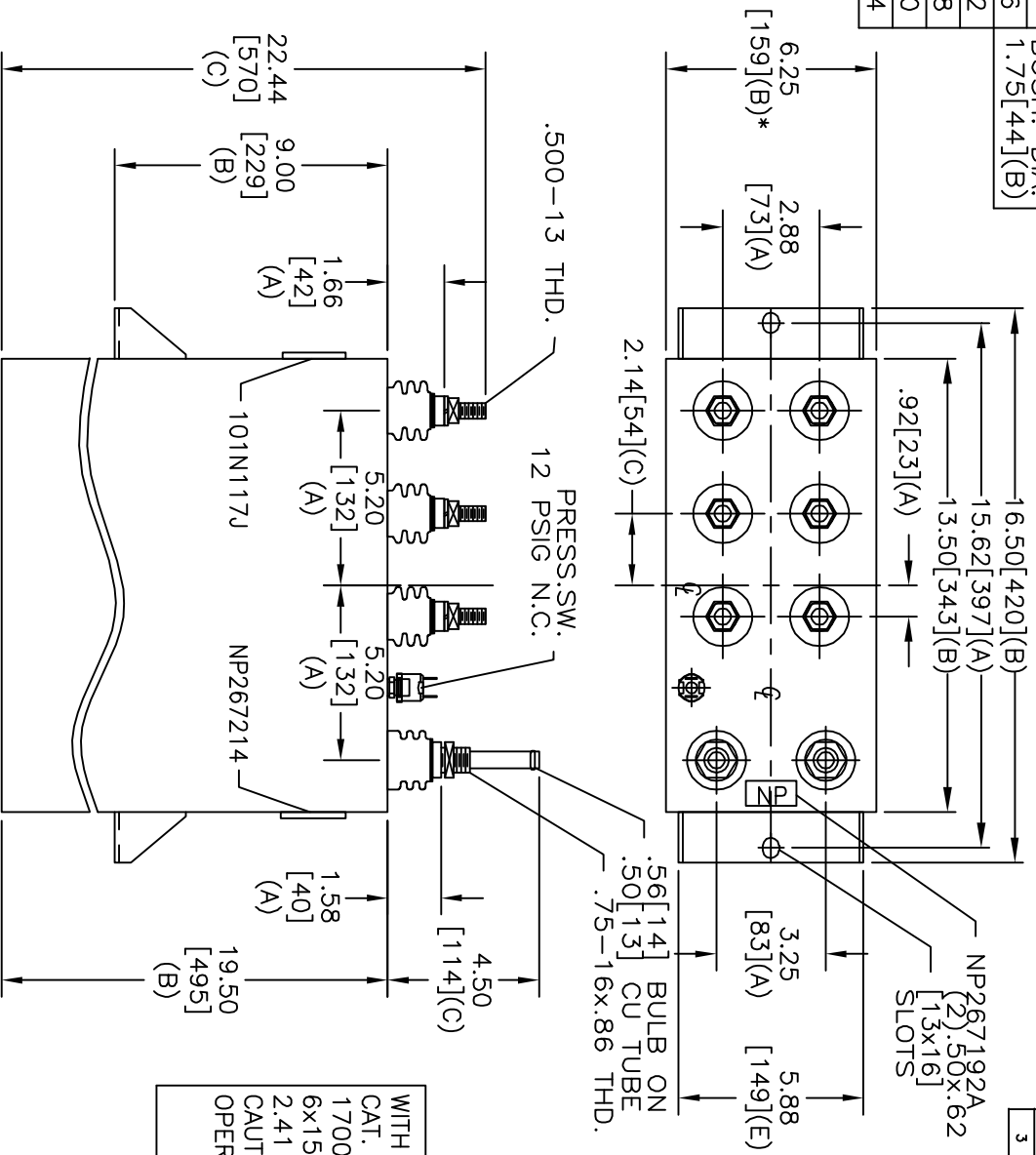
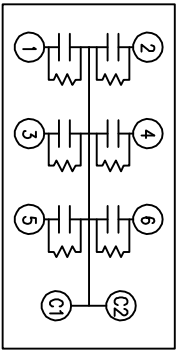


TOL	+/-	BUSH. DIA.
A	.06	1.75[.44](B)
B	.12	
C	.18	
D	.50	
E	.04	



SIZE	DWG. NO.	SHT	REV
A	19L0987WH4	2	3
REV	DESCRIPTION	DATE	APPROVED
3	CASE WAS 20.00	12/04/2006	B.ROSS

TERM	UF	KVAR
1	15.66	283.3
2	15.66	283.3
3	15.66	283.3
4	15.66	283.3
5	15.66	283.3
6	15.66	283.3



SCHEMATIC DIAGRAM - 617

WITH INTERNAL DISCH RESISTORS
 CAT. 19L0987WH4 SN
 1700KVAR 2400V 500HZ 1PH
 6x15.66 UF/TAP
 2.41 GAL. COMBUSTIBLE LIQUID
 CAUTION! BEFORE INSTALLING OR
 OPERATING READ GEH-2733

NP267214

* UP TO +.50[.13]
 CASE BULGE

MAX. TERMINAL
 TIGHTENING TORQUE
 15 FT-LBS

NP267192A

INDUSTRIAL SYSTEMS
 FORT EDWARD, N.Y., U.S.A.

DRAWN EPC DATE 11/6/1996
 ISSUED DATE 11/6/1996

SIZE A
 SCALE

OUTLINE
 19L0987WH4

SHEET 2 CONT 3

DISTR. TO