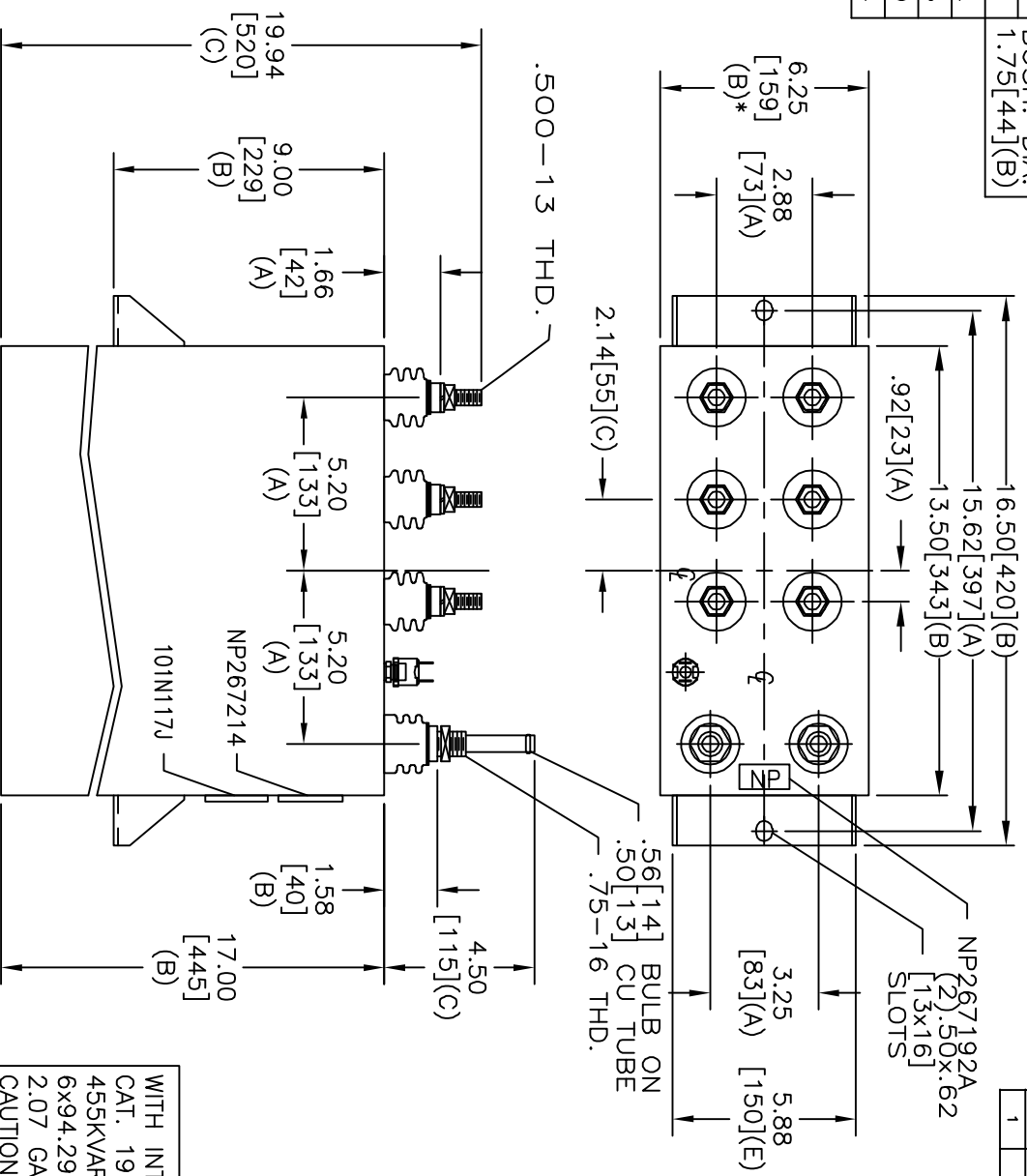
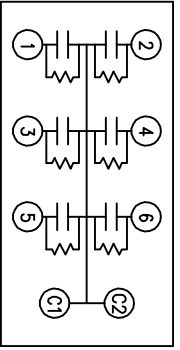


TOL	+/-	BUSH. DIA.
A	.06	1.75[.44](B)
B	.12	
C	.18	
D	.50	
E	.04	



SIZE	DWG NO	SHT	REV
A	19L1023WH4	2	1
REV	DESCRIPTION	DATE	APPROVED
1	CHG CASE HT	11-17-04	EJM

TERM	UF	KVAR
1	94.29	75.8
2	94.29	75.8
3	94.29	75.8
4	94.29	75.8
5	94.29	75.8
6	94.29	75.8



SCHEMATIC DIAGRAM - 617

WITH INTERNAL DISCH RESISTORS
 CAT. 19L1023WH4 SN
 455KVAR 800V 200HZ 1PH
 6x94.29 UF/TAP
 2.07 GAL. COMBUSTIBLE LIQUID
 CAUTION! BEFORE INSTALLING OR
 OPERATING READ GEH-2733

NP267214

* UP TO +.50[13]
 CASE BULGE

MAX. TERMINAL
 TIGHTENING TORQUE
 15 FT-LBS

NP267192A

INDUSTRIAL SYSTEMS FORT EDWARD, N.Y., U.S.A.	
DRAWN	EPC
ISSUED	
DATE	8-29-96
DATE	9-4-96

SIZE	UNIT WEIGHT
A	78 / 35 LB/KG

OUTLINE	
19L1023WH4	
SHEET	2
CONT	3

DISTR. TO