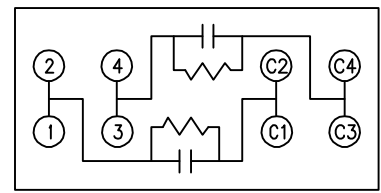
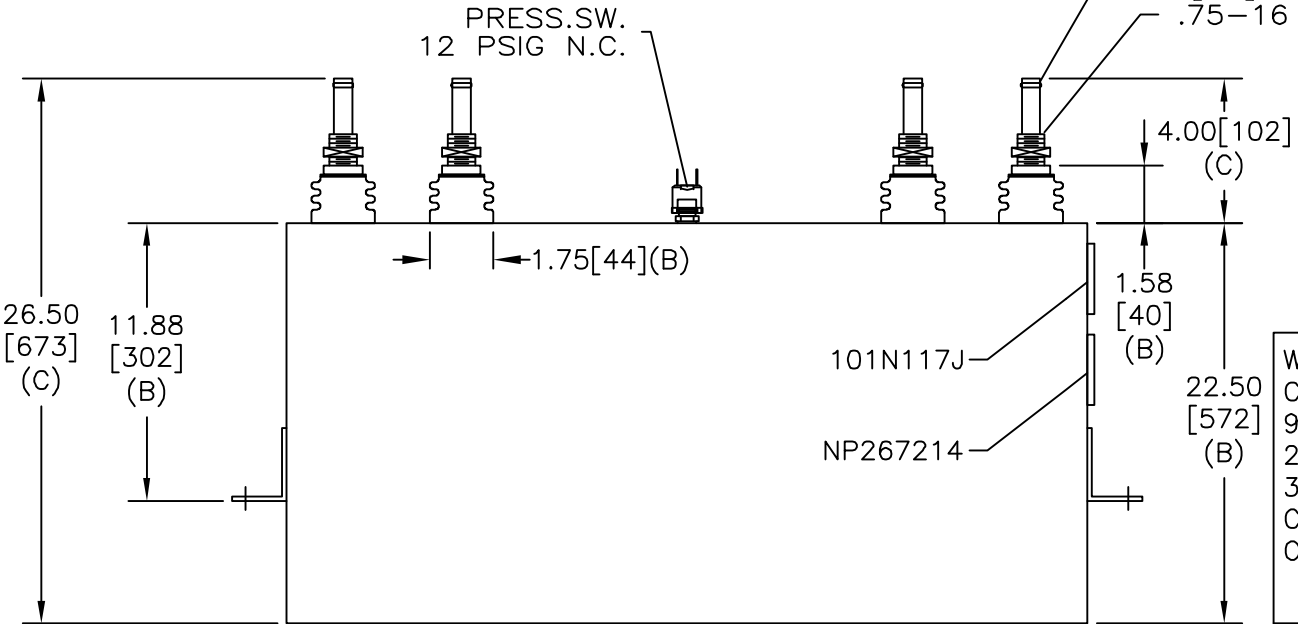
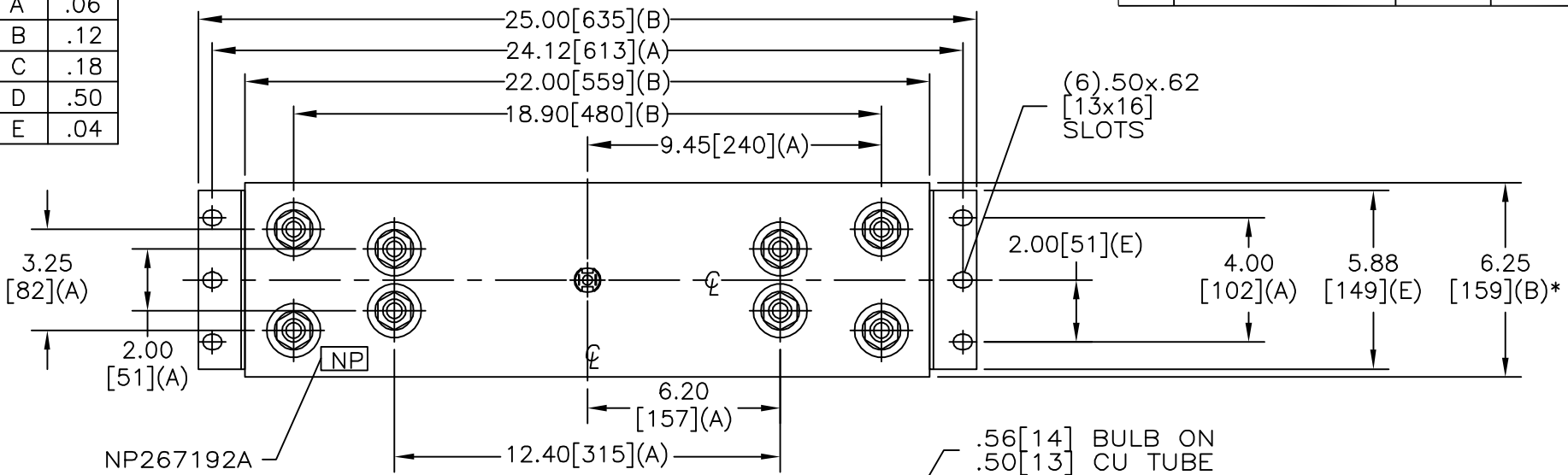


SIZE A	DWG NO 19L1031WH4	SHT 2	REV
REV	DESCRIPTION	DATE	APPROVED

TOL	+/-
A	.06
B	.12
C	.18
D	.50
E	.04



WITH INTERNAL DISCH RESISTORS
 CAT. 19L1031WH4 SN
 9425KVAR 2000V 1500HZ 1PH
 250 UF/TAP
 3.60 GAL. COMBUSTIBLE LIQUID
 CAUTION! BEFORE INSTALLING OR
 OPERATING READ GEH-2733

NP267214

* UP TO +.75 [19] CASE BULGE

MAX. TERMINAL TIGHTENING TORQUE
 15 FT-LBS

NP267192A

	INDUSTRIAL SYSTEMS FORT EDWARD, N.Y., U.S.A.	
	DRAWN B. ROSS	DATE 3/25/02
ISSUED	DATE	

SIZE A
SCALE

OUTLINE 19L1031WH4	
SHEET 2	CONT ON 3

DISTR. TO