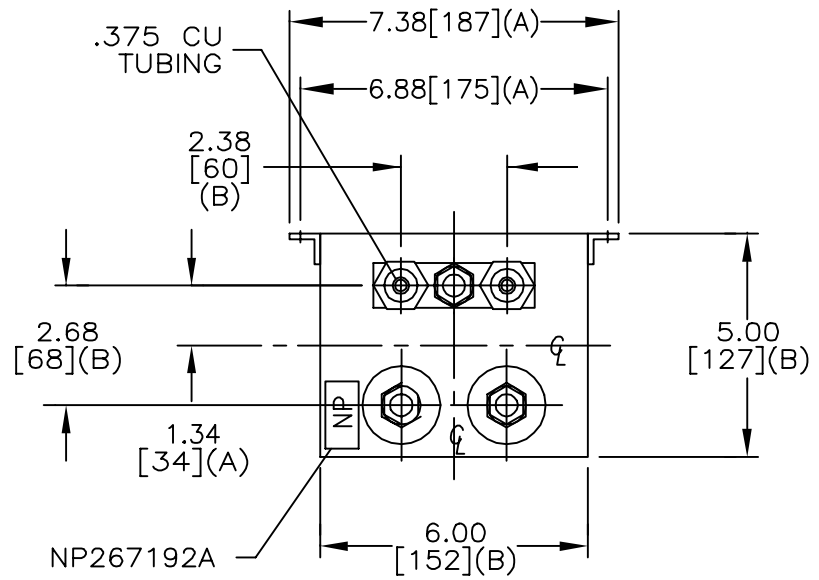


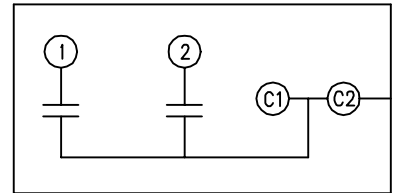
SIZE A	DWG NO 19L1211WH3	SHT 2	REV
REV	DESCRIPTION	DATE	APPROVED

TOL	+/-	BUSH. DIA.
A	.06	1.75[44](B)
B	.12	
C	.18	
D	.50	
E	.04	

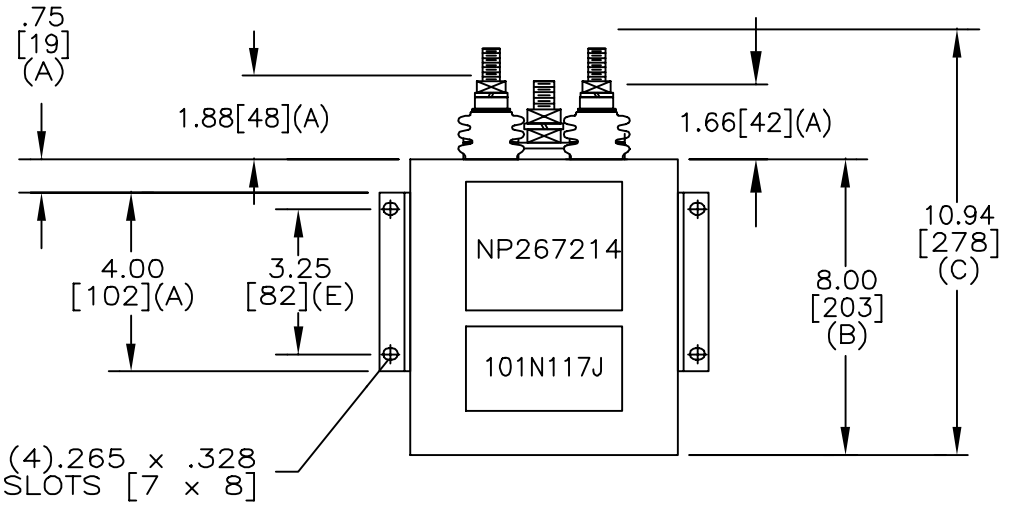


\* UP TO +.50[13]  
CASE BULGE

TERM	uF	kVAR
1	9.2	40
2	9.2	40



SCHEMATIC DIAGRAM - 231



WITH INTERNAL DISCH RESISTORS  
 CAT. 19L1211WH3 SN  
 80 KVAR 560V 2200 HZ 1 PH  
 2x9.2 UF/TAP  
 0.49 GAL. COMBUSTIBLE LIQUID  
 CAUTION! BEFORE INSTALLING OR  
 OPERATING READ GEH-2733  
 NP267214

MAX. TERMINAL  
 TIGHTENING TORQUE  
 15 FT-LBS  
 NP267192A

<b>INDUSTRIAL SYSTEMS</b> <b>FORT EDWARD, N.Y., U.S.A.</b>		SIZE A
DRAWN B. ROSS	DATE DEC 16, 2002	SCALE
ISSUED	DATE	

**OUTLINE**  
**19L1211WH3**  
 SHEET 2 CONT ON -

DISTR. TO