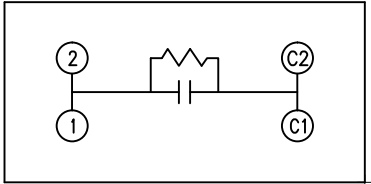
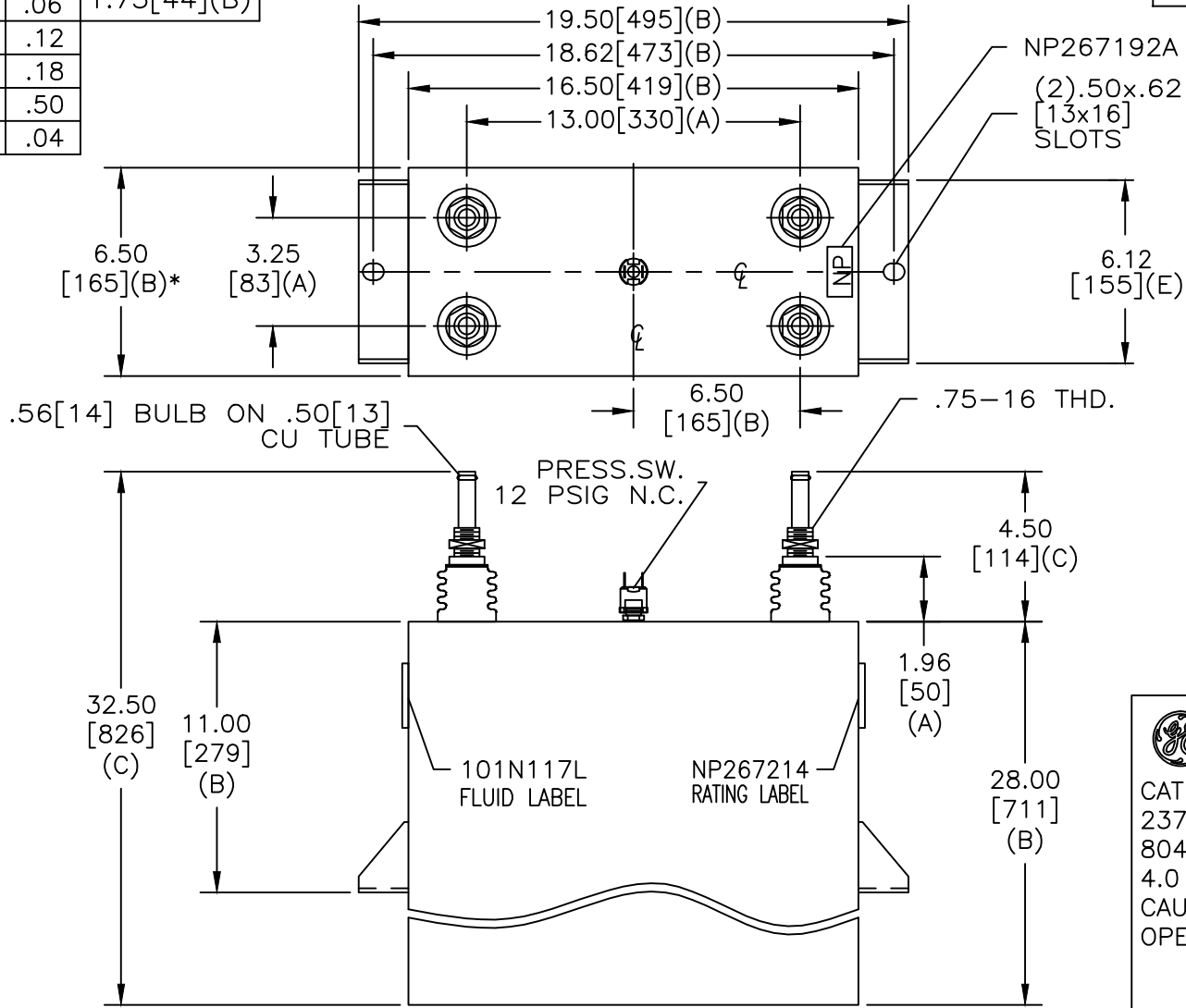


SIZE A	DWG NO 1911217WH4	SHT 2	REV
REV	DESCRIPTION	DATE	APPROVED

TOL	+/-	BUSH. DIA.
A	.06	1.75[44](B)
B	.12	
C	.18	
D	.50	
E	.04	



SCHEMATIC DIAGRAM - 107

**GE** CAPACITOR  
WITH INTERNAL DISCHARGE RESISTORS

CAT. 19L1217WH4 SN  
2370KVAR 1250V 300HZ 1PH  
804.7 UF/TAP  
4.0 GAL. COMBUSTIBLE LIQUID  
CAUTION! BEFORE INSTALLING OR  
OPERATING READ GEH-2733

MADE IN U.S.A. NP267214

\* UP TO +.50[13] CASE BULGE

MAX. TERMINAL  
TIGHTENING TORQUE  
15 FT-LBS

NP267192A

GE ENERGY FORT EDWARD, N.Y., U.S.A.		SIZE A
DRAWN HBO	DATE 4/16/15	SCALE
ISSUED	DATE 4/16/15	

OUTLINE  
1911217WH4

SHEET 2 CONT ON 3

DISTR. TO