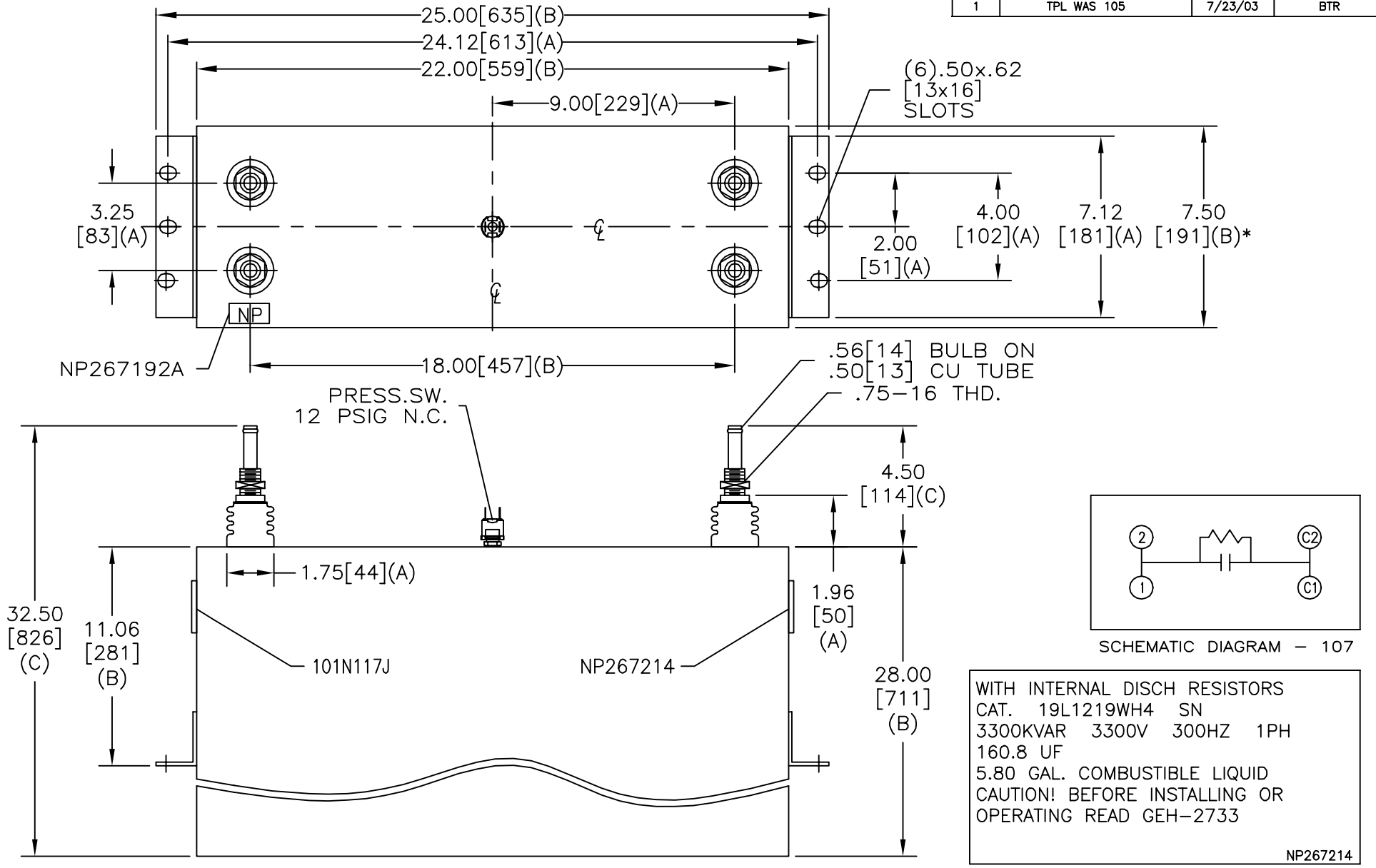


SIZE A	DWG NO 19L1219WH4	SHT 2	REV 1
REV 1	DESCRIPTION TPL WAS 105	DATE 7/23/03	APPROVED BTR



* UP TO +.75 [19] CASE BULGE

MAX. TERMINAL TIGHTENING TORQUE 15 FT-LBS

NP267192A

INDUSTRIAL SYSTEMS FORT EDWARD, N.Y., U.S.A.		SIZE A
DRAWN B. ROSS	DATE JUN 17, 2003	SCALE
ISSUED	DATE 6/25/03	

<h1>OUTLINE</h1> <h2>19L1219WH4</h2>	
SHEET 2	CONT ON 3

DISTR. TO