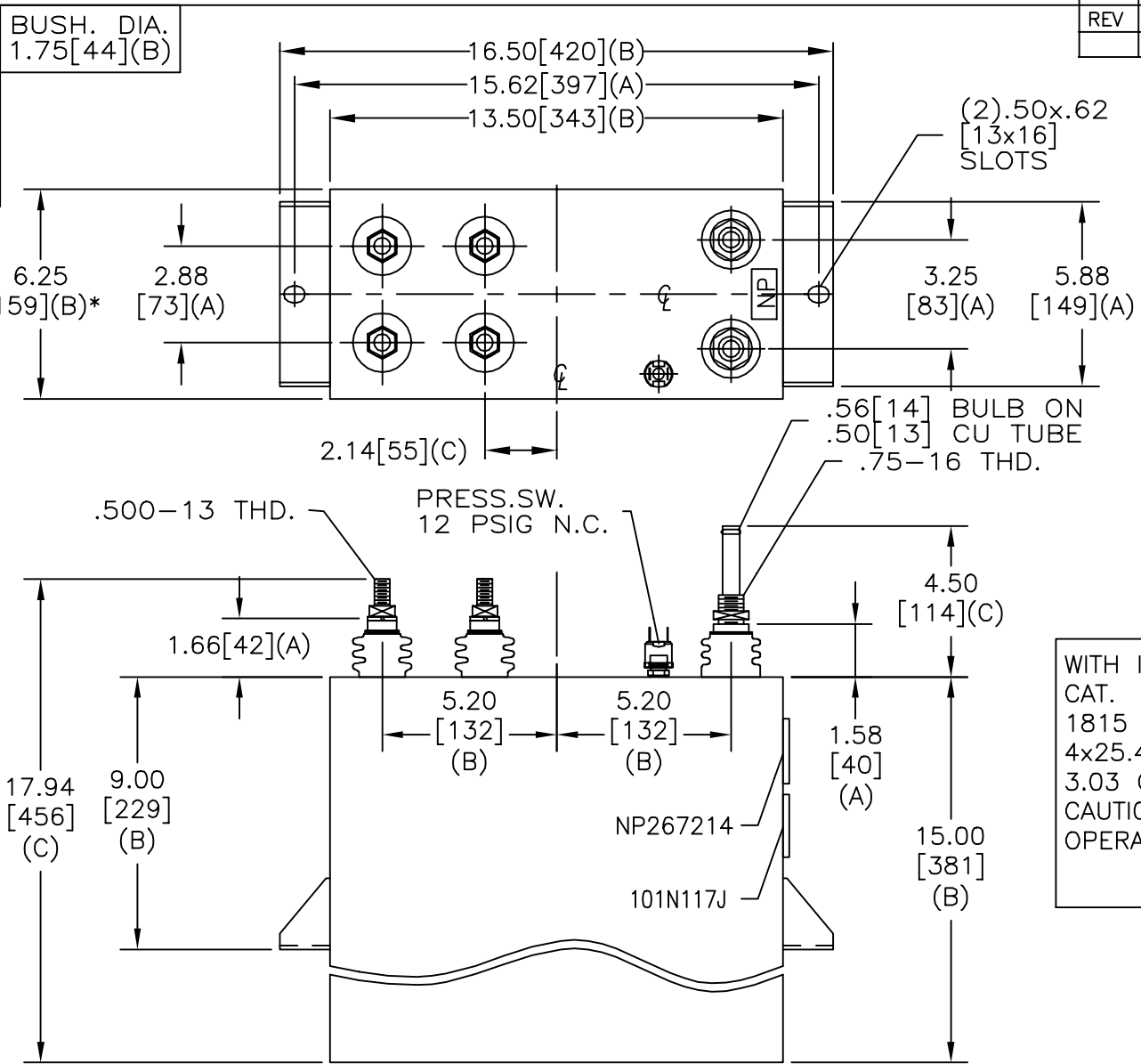
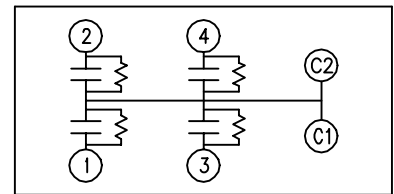


SIZE A	DWG NO 19L1221WH4	SHT 2	REV
REV	DESCRIPTION	DATE	APPROVED

TOL	+/-
A	.06
B	.12
C	.18
D	.50
E	.04



TERM	uF	kVAR
1	25.47	453.75
2	25.47	453.75
3	25.47	453.75
4	25.47	453.75



SCHEMATIC DIAGRAM - 422

WITH INTERNAL DISCH RESISTORS
 CAT. 19L1221WH4 SN
 1815 KVAR 1540 V 1000 HZ 1 PH
 4x25.47 UF/TAP
 3.03 GAL. COMBUSTIBLE LIQUID
 CAUTION! BEFORE INSTALLING OR
 OPERATING READ GEH-2733

NP267214

* UP TO +.50 [13]
 CASE BULGE

MAX. TERMINAL
 TIGHTENING TORQUE
 15 FT-LBS

NP267192A

INDUSTRIAL SYSTEMS FORT EDWARD, N.Y., U.S.A.		SIZE A
DRAWN B.ROSS	DATE JUL 9, 2003	SCALE
ISSUED	DATE 8/20/03	

<h1>OUTLINE</h1> <h2>19L1221WH4</h2>	
SHEET 2	CONT ON 3

DISTR. TO