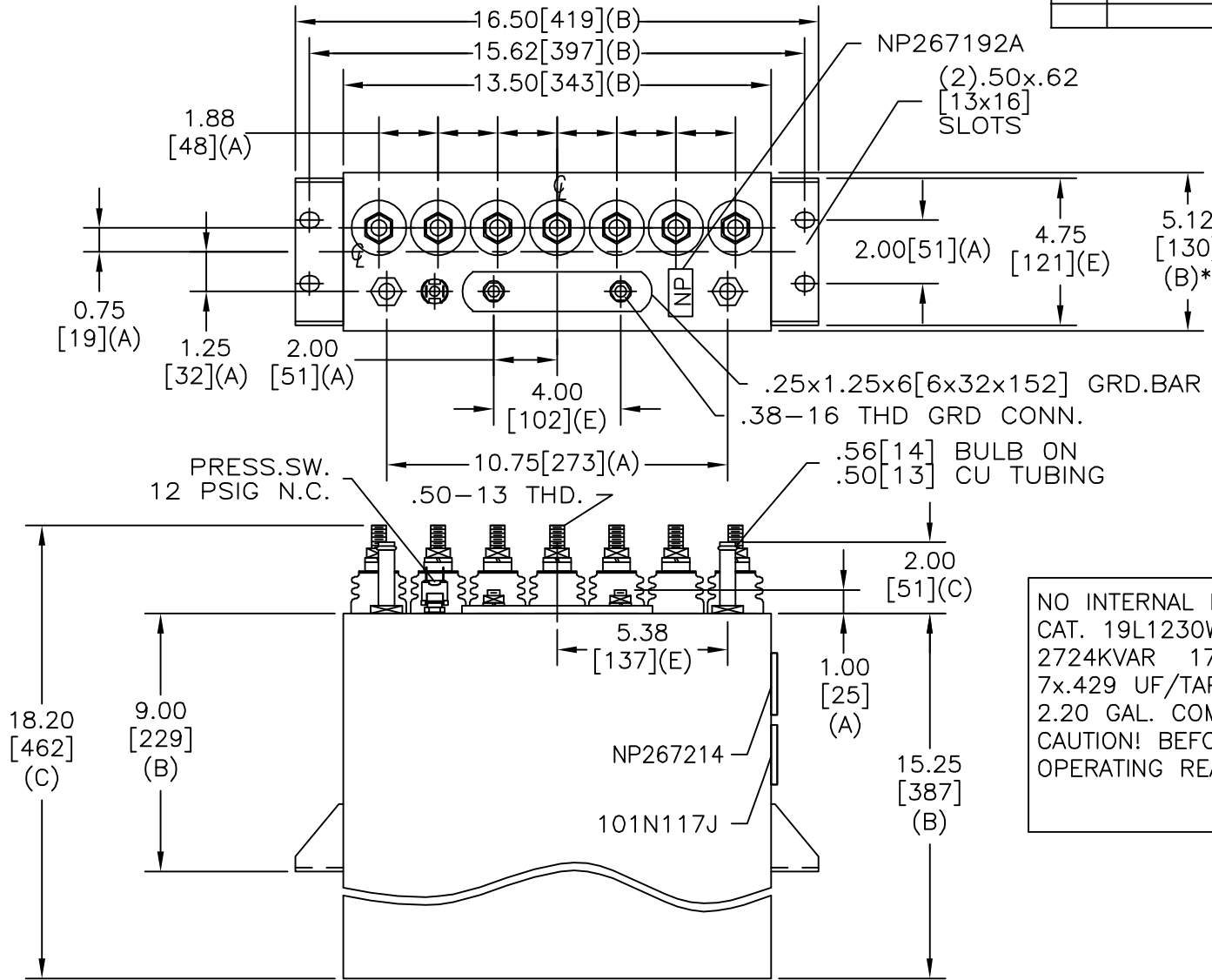
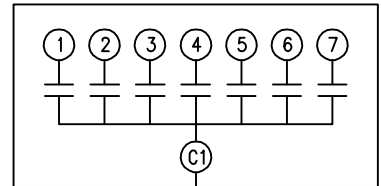


SIZE A	DWG NO 19L1230WH4	SHT 2	REV
REV	DESCRIPTION	DATE	APPROVED



TERM	uF	kVAR
1	.429	389.14
2	.429	389.14
3	.429	389.14
4	.429	389.14
5	.429	389.14
6	.429	389.14
7	.429	389.14



SCHMATIC DIAGRAM - 716

NO INTERNAL DISCH RESISTORS  
 CAT. 19L1230WH4 SN  
 2724KVAR 1700V 50000HZ 1PH  
 7x.429 UF/TAP  
 2.20 GAL. COMBUSTIBLE LIQUID  
 CAUTION! BEFORE INSTALLING OR  
 OPERATING READ GEH-2733

NP267214

\* UP TO +.50 [13] CASE BULGE

MAX. TERMINAL TIGHTENING TORQUE 15 FT-LBS

NP267192A

<b>INDUSTRIAL SYSTEMS</b> FORT EDWARD, N.Y., U.S.A.	SIZE A
	SCALE
DRAWN B. ROSS	DATE OCT 13, 2003
ISSUED	DATE 10/22/03

<h1>OUTLINE</h1> <h2>19L1230WH4</h2>	
SHEET 2	CONT ON -

DISTR. TO