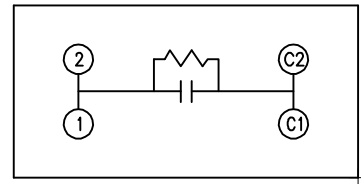
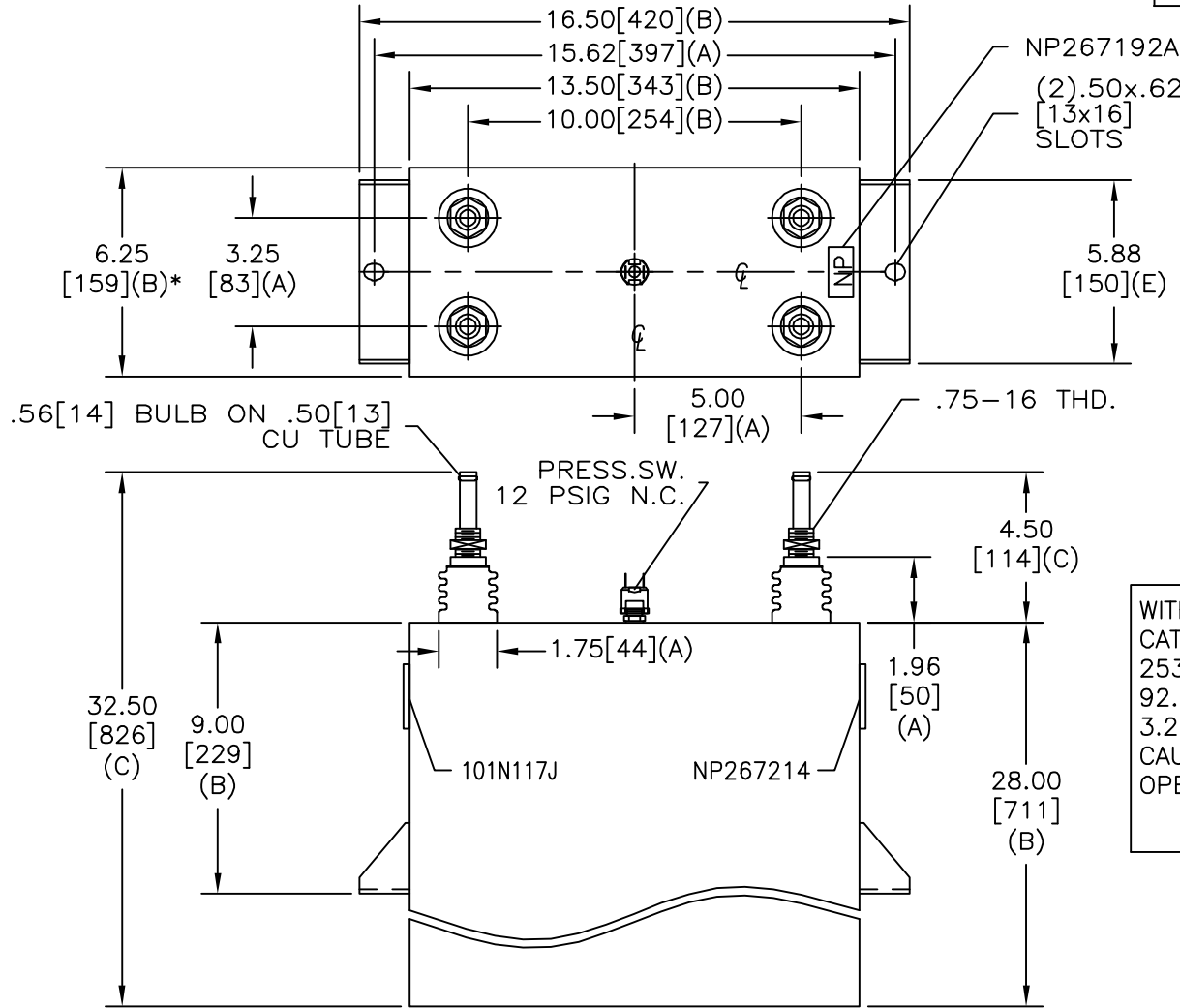


SIZE A	DWG NO 19L1236WH4	SHT 2	REV
REV	DESCRIPTION	DATE	APPROVED



SCHEMATIC DIAGRAM - 107

WITH INTERNAL DISCH RESISTORS
 CAT. 19L1236WH4 SN
 2532KVAR 3300V 400HZ 1PH
 92.51 UF
 3.2 GAL. COMBUSTIBLE LIQUID
 CAUTION! BEFORE INSTALLING OR
 OPERATING READ GEH-2733
 NP267214

* UP TO +.50 [13] CASE BULGE

MAX. TERMINAL TIGHTENING TORQUE 15 FT-LBS

NP267192A

INDUSTRIAL SYSTEMS FORT EDWARD, N.Y., U.S.A.		SIZE A
DRAWN B. ROSS	DATE JAN 15, 2004	SCALE
ISSUED	DATE 1/21/04	

OUTLINE
19L1236WH4

SHEET 2 CONT ON 3

DISTR. TO