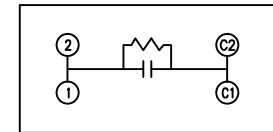
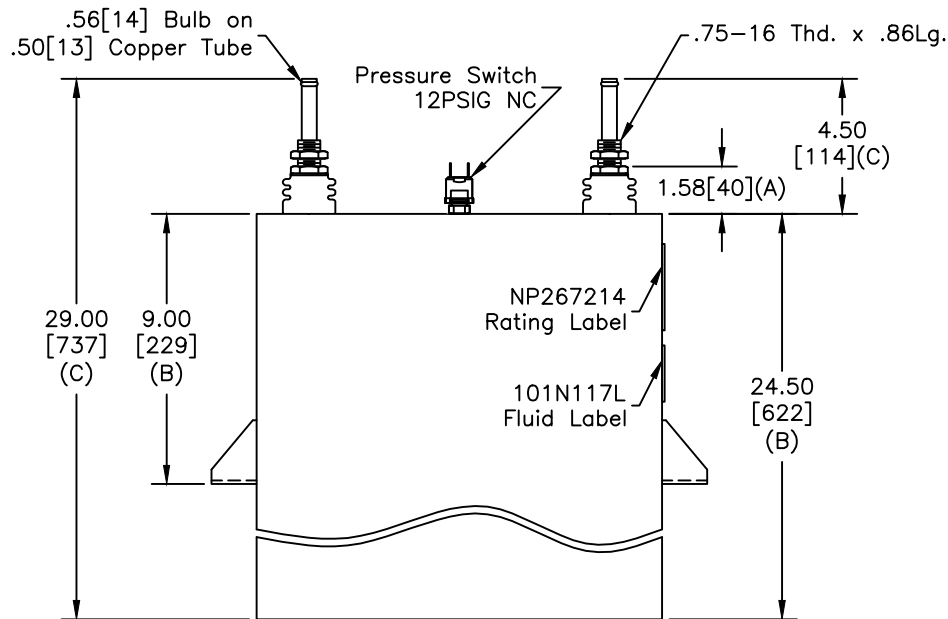
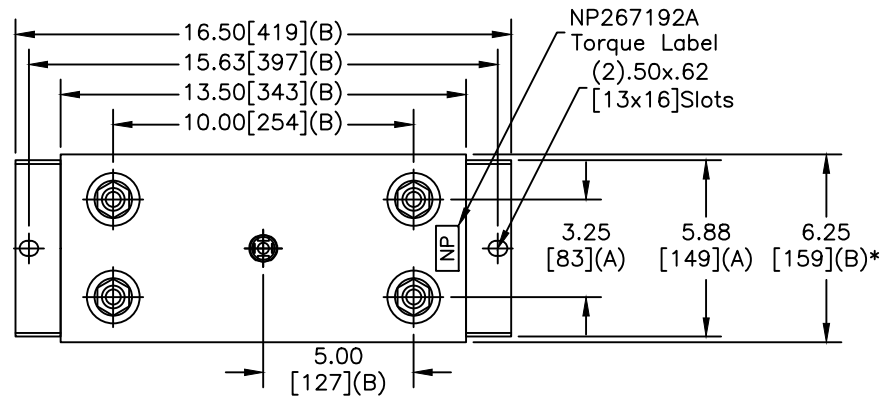


| | |
|------------|-------------|
| TOL | +/- |
| A | .06 |
| B | .12 |
| C | .18 |
| D | .50 |
| E | .04 |
| BUSH. DIA. | 1.75[44](B) |

| | | | |
|------|-------------|----------|----------|
| SIZE | DWG NO | SHT | REV |
| A | 19L1250WH4 | 2 | 2 |
| REV | DESCRIPTION | DATE | APPROVED |
| 2 | UPDATE NP'S | 1/6/2015 | JBC |



SCHEMATIC DIAGRAM - 107

GE CAPACITOR
WITH INTERNAL DISCHARGE RESISTORS

CAT. 19L1250WH4 SN
1680KVAR 700V 500HZ 1PH
1091 UF
2.92 GAL. COMBUSTIBLE LIQUID
CAUTION! BEFORE INSTALLING OR
OPERATING READ GEH-2733

MADE IN USA NP267214

* UP TO +.50[13]
CASE BULGE

MAX. TERMINAL
TIGHTENING TORQUE
15 FT-LBS.

NP267192A

| | | | | | |
|---|---------|------|-----------|------------------------|-----------|
| GE ENERGY FORT EDWARD, N.Y., U.S.A. | | SIZE | A | Est Weight 106 lbs. | |
| DRAWN | B. Ross | DATE | | | 6/18/2004 |
| ISSUED | | DATE | 6/30/2004 | SCALE | WC1 |

| | | | | | |
|-------------------------------------|--|-------|---|------|----|
| OUTLINE 19L1250WH4 | | SHEET | 2 | CONT | ON |
| | | - | | | |

DISTR. TO