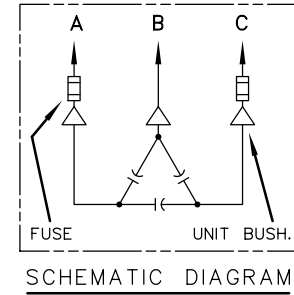
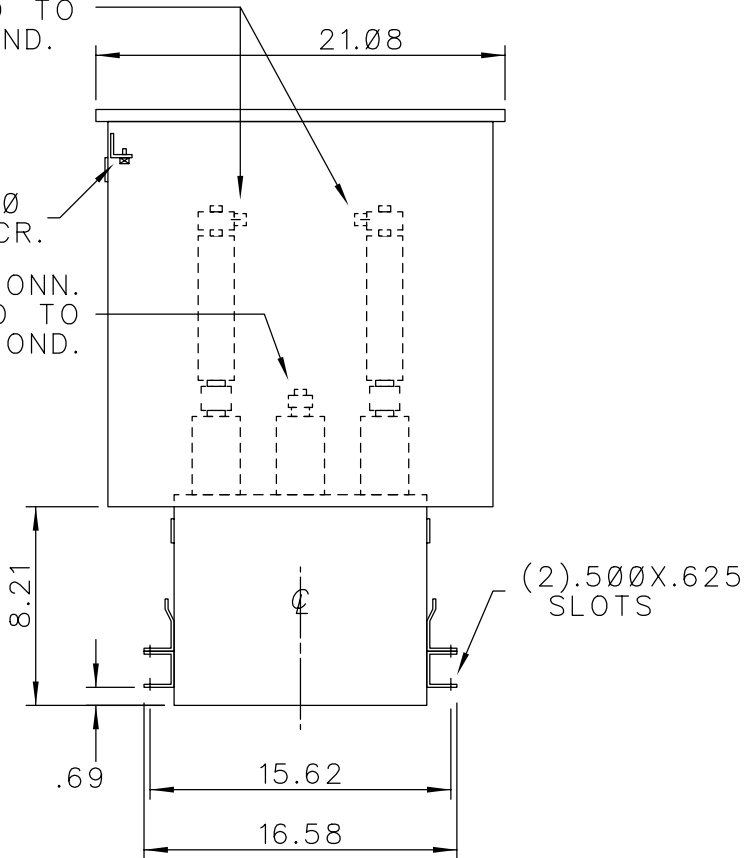


SOLDERLESS CONN.
FOR #10 SOLID TO
#4 STR'D COND.

SOLDERLESS CONN.
FOR #10 SOLID TO
#2 STR'D COND.

.25-2Ø
GRD SCR.




CAT. 37F0520312 SER.NO.
KVAR 50 VOLT 2400
Hz 60 PH 3 CONN. DELTA
CONN. DIAG.

READ INST. GEH-2711

NP220452

NOTE:
ADD "Ø37" SUFFIX TO
CATALOG NO. FOR
CSA LABELED PRODUCT.

| | |
|--|------------------|
| GENERAL  ELECTRIC | |
| PWR DEL'Y COMPONENTS OPER. LCTN: HUDSON FALLS NY | |
| DRAWN M.CHENEY | JANUARY 2, 1984 |
| ISSUED | JANUARY 19, 1984 |

SIZE
A

APPROX.WT
71 LBS

OUTLINE
37F0520312

SCALE 13D-83-06 SHEET 2