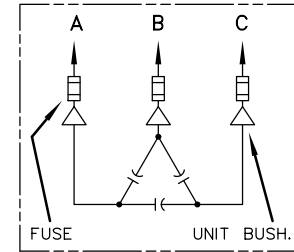
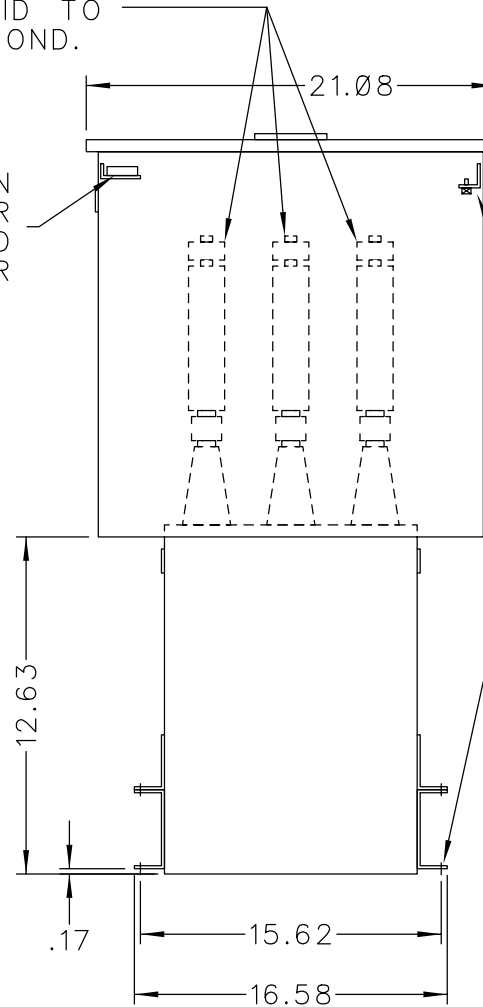


SOLDERLESS CONN.  
FOR #10 SOLID TO  
#4 STR'D COND.

CONNECTION  
FOR USER  
SUPPLIED  
120V POWER




SCHEMATIC DIAGRAM

INCLUDES DISCHARGE RESISTORS

0.5-50.  
GRD SCR.

CAT. 37F0520537 SER.NO.	
kVAR 200	Hz 60 Ph 3
VOLT 2400	CONN. DELTA
DIAG	
GEH-2711	
NP220452	

NOTE:  
ADD "037" SUFFIX TO  
CATALOG NO. FOR  
CSA LABELED PRODUCT.

 <p>CAPACITOR &amp; POWER PROTECTION FORT EDWARD, N.Y., U.S.A.</p>	SIZE <b>A</b>	APPROX.WT 92 LBS
	DRAWN E.McGINN ISSUED	SEPT. 15, 1998 SCALE

**OUTLINE**  
**37F0520537**