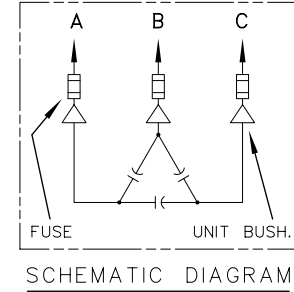
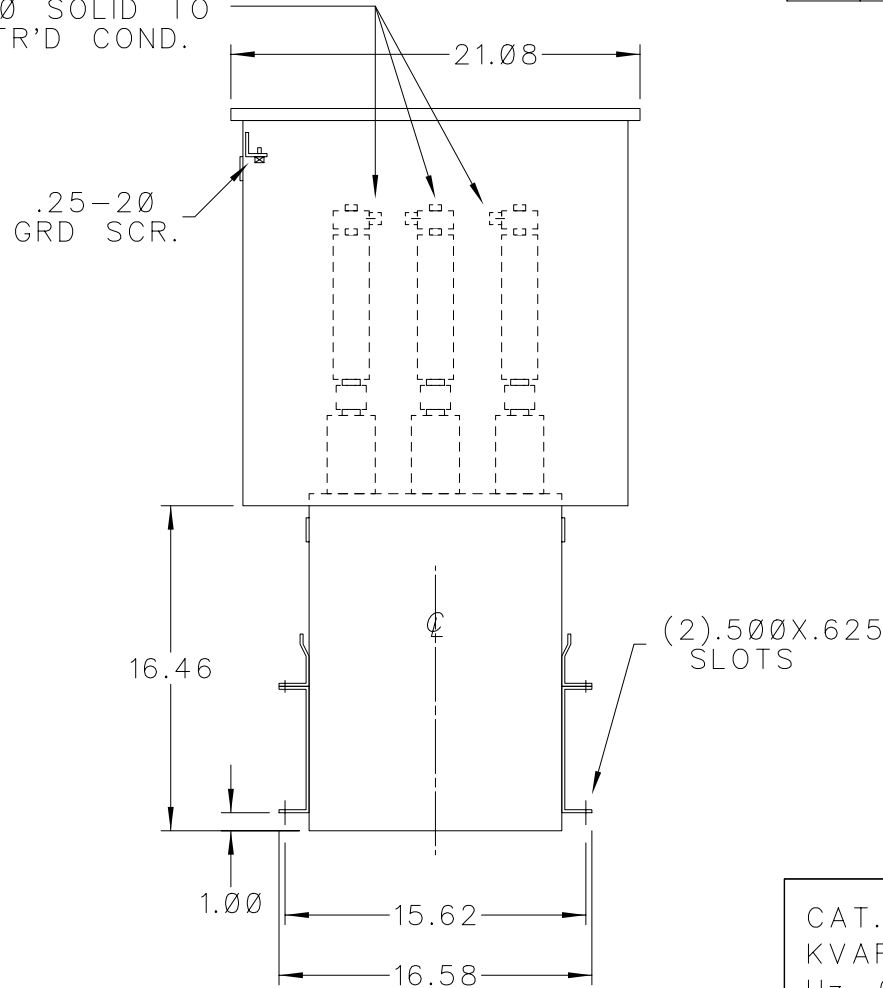
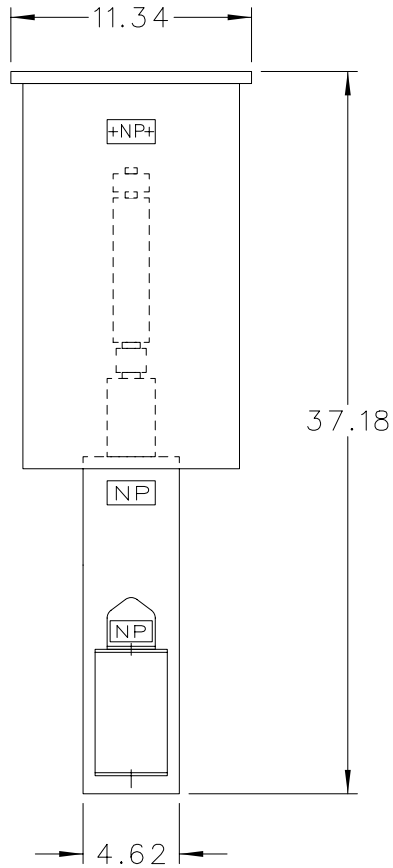


|                  |                    |              |     |
|------------------|--------------------|--------------|-----|
| SIZE<br><b>A</b> | DWG NO. 37F0523336 | SH 2         | REV |
| REV              | NEW 5/9/88         | DATE         |     |
| 1                | HODGES/UPDATE      | 13R-89<br>48 |     |

SOLDERLESS CONN.  
FOR #10 SOLID TO  
#4 STR'D COND.




CAT. 37F0523336 SER.NO.  
KVAR 150 VOLT 4160  
Hz 60 PH 3 CONN. DELTA  
CONN. DIAG.

READ INST. GEH-2711

NP220452

NOTE:  
ADD "Ø37" SUFFIX TO  
CATALOG NO. FOR  
CSA LABELED PRODUCT.

|  |                      |
|--|----------------------|
| GENERAL  ELECTRIC |                      |
| PWR & CAP PROTECTION OPER.   | LCTN: FORT EDWARD NY |
| DRAWN HUMPHRIES  | MAY 5, 1988          |
| ISSUED   |                      |

|                  |                       |
|------------------|-----------------------|
| SIZE<br><b>A</b> | APPROX. WT<br>109 LBS |
| SCALE            | 13R88-42              |

OUTLINE  
**37F0523336**

SHEET 2

DISTR TO