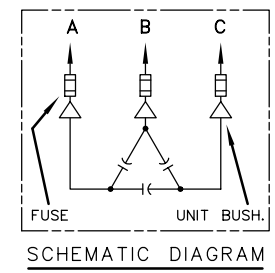
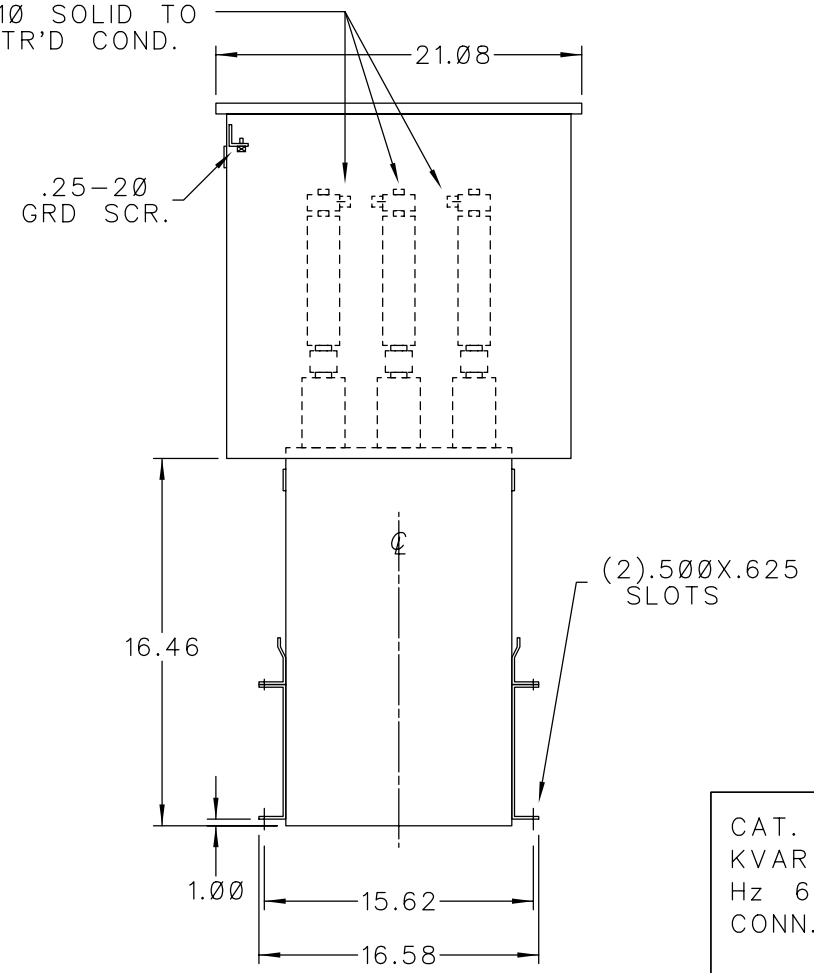
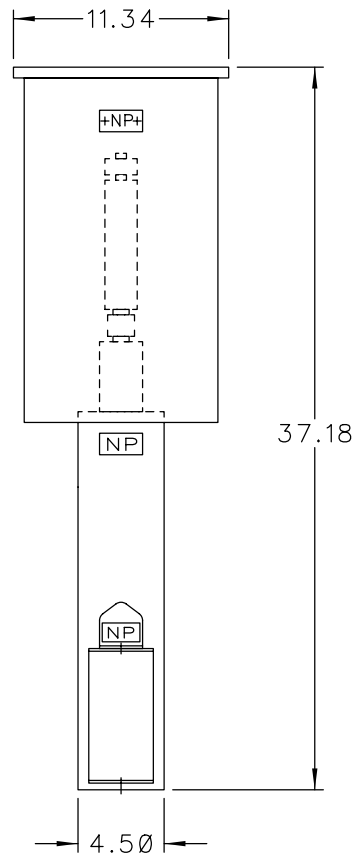


NOTE: ADD "037" SUFFIX TO CATALOG NO. FOR CSA LABELED PRODUCT.

SOLDERLESS CONN. FOR #10 SOLID TO #4 STR'D COND.



CAT. 37F0523338 SER.NO.
 KVAR 175 VOLT 4160
 Hz 60 PH 3 CONN. DELTA
 CONN. DIAG.
 READ INST. GEH-2711

NP220452

<p>CAPACITOR & POWER PROTECTION FORT EDWARD, N.Y., U.S.A.</p>	<p>SIZE A</p>	<p>APPROX. WT 118 LBS</p>	<p>OUTLINE 37F0523338</p>	
	<p>DRAWN HUMPHRIES FEB. 5, 1993</p>		<p>SCALE</p>	<p>13D-93</p>
<p>ISSUED</p>				<p>DISTR TO</p>