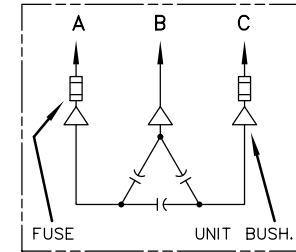
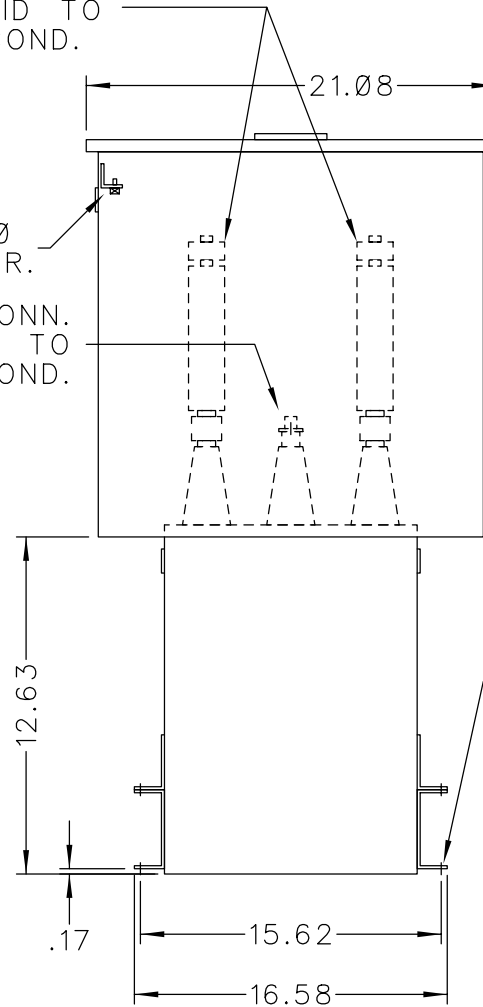


SOLDERLESS CONN.
FOR #10 SOLID TO
#4 STR'D COND.

.25-20
GRD SCR.

SOLDERLESS CONN.
FOR #10 SOLID TO
#2 STR'D COND.




SCHEMATIC DIAGRAM

INCLUDES DISCHARGE RESISTORS

| | |
|-----------------|-------------|
| CAT. 37F0523418 | SER.NO. |
| kVAR 175 | Hz 60 Ph 3 |
| VOLT 4160 | CONN. DELTA |
| DIAG | |
| NP220452 | GEH-2711 |

NOTE:
ADD "037" SUFFIX TO
CATALOG NO. FOR
CSA LABELED PRODUCT.

| | | |
|--|--------------------------|-----------------------|
|  CAPACITOR & POWER PROTECTION FORT EDWARD, N.Y., U.S.A. | SIZE A | APPROX.WT 86 LBS |
| | DRAWN E.McGINN ISSUED | FEB. 5, 1993 SCALE |

OUTLINE
37F0523418