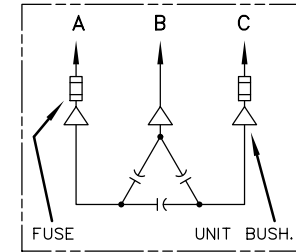
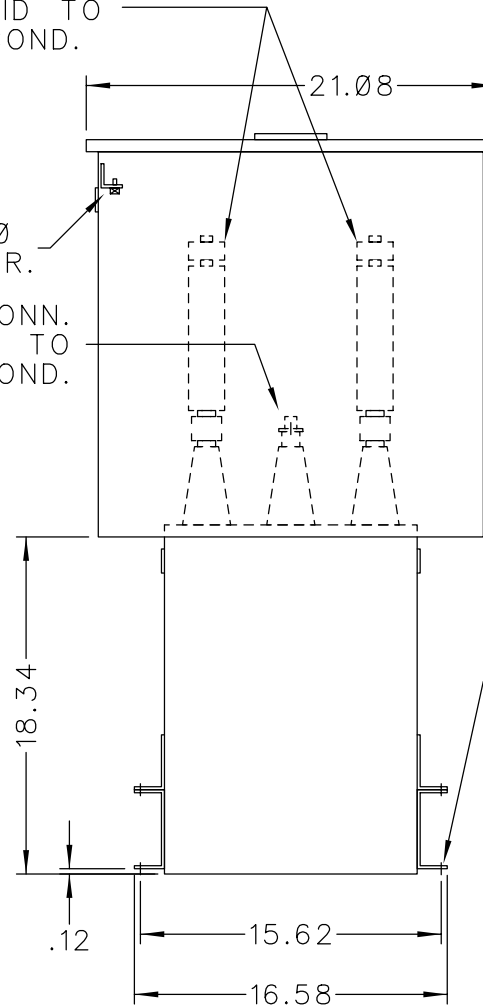


SOLDERLESS CONN.
FOR #10 SOLID TO
#4 STR'D COND.

.25-20
GRD SCR.

SOLDERLESS CONN.
FOR #10 SOLID TO
#2 STR'D COND.




SCHEMATIC DIAGRAM

INCLUDES DISCHARGE RESISTORS

CAT. 37F0523422 SER.NO.
kVAR 300 Hz 60 Ph 3
VOLT 4160 CONN. DELTA
DIAG
NP220452
GEH-2711

NOTE:
ADD "037" SUFFIX TO
CATALOG NO. FOR
CSA LABELED PRODUCT.

 CAPACITOR & POWER PROTECTION FORT EDWARD, N.Y., U.S.A.	SIZE A	APPROX.WT 114 LBS
	DRAWN JCozzens ISSUED	JULY 28, 1997 SCALE

OUTLINE
37F0523422