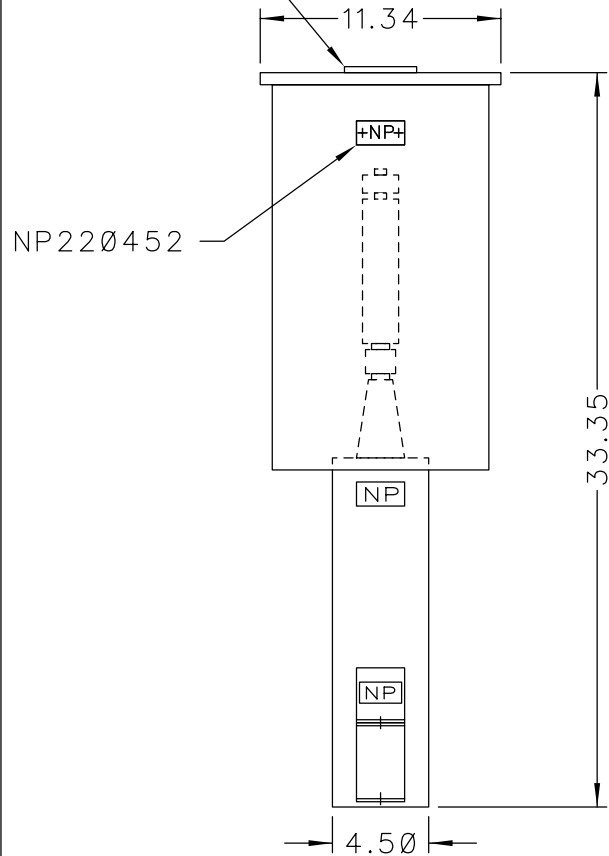


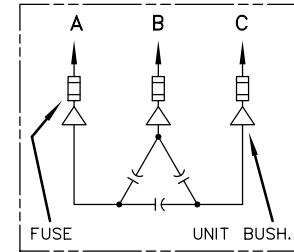
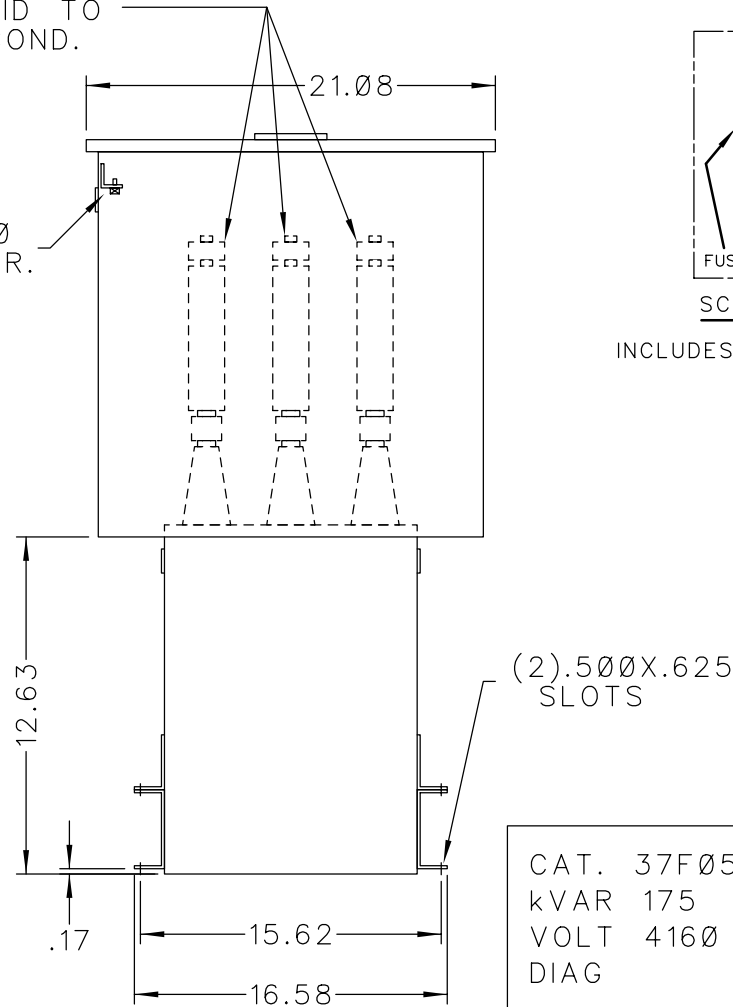
| | | | |
|------------------|---------------------|------|-----|
| SIZE A | DWG NO. 37F0523438 | SH 2 | REV |
| REV 1 | McGINN DEL BARRIERS | DATE | |

101N140
LOCATE ON
CENTER OF
COVER

SOLDERLESS CONN.
FOR #10 SOLID TO
#4 STR'D COND.



.25-20
GRD SCR.




SCHEMATIC DIAGRAM

INCLUDES DISCHARGE RESISTORS

CAT. 37F0523438 SER.NO.
kVAR 175 Hz 60 Ph 3
VOLT 4160 CONN. DELTA
DIAG
NP220452
GEH-2711

NOTE:
ADD "037" SUFFIX TO
CATALOG NO. FOR
CSA LABELED PRODUCT.

| | | |
|--|------------------|----------------------|
|  CAPACITOR & POWER PROTECTION FORT EDWARD, N.Y., U.S.A. | SIZE A | APPROX. WT 86 LBS |
| | SCALE | |
| DRAWN E.McGINN | MAY 17, 1994 | |
| ISSUED | 5-18-94 | |

OUTLINE
37F0523438

SHEET 2

DISTR TO