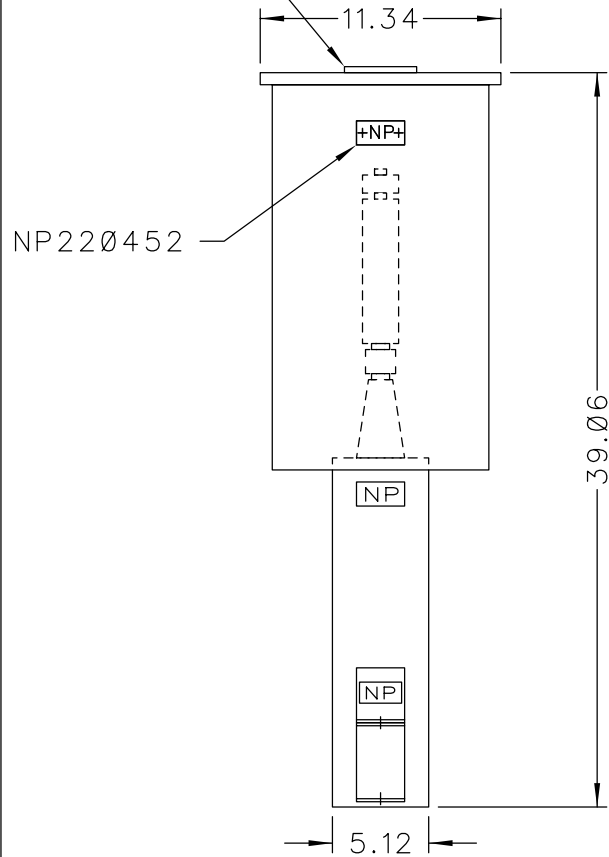
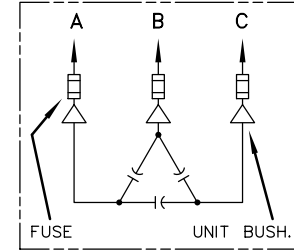
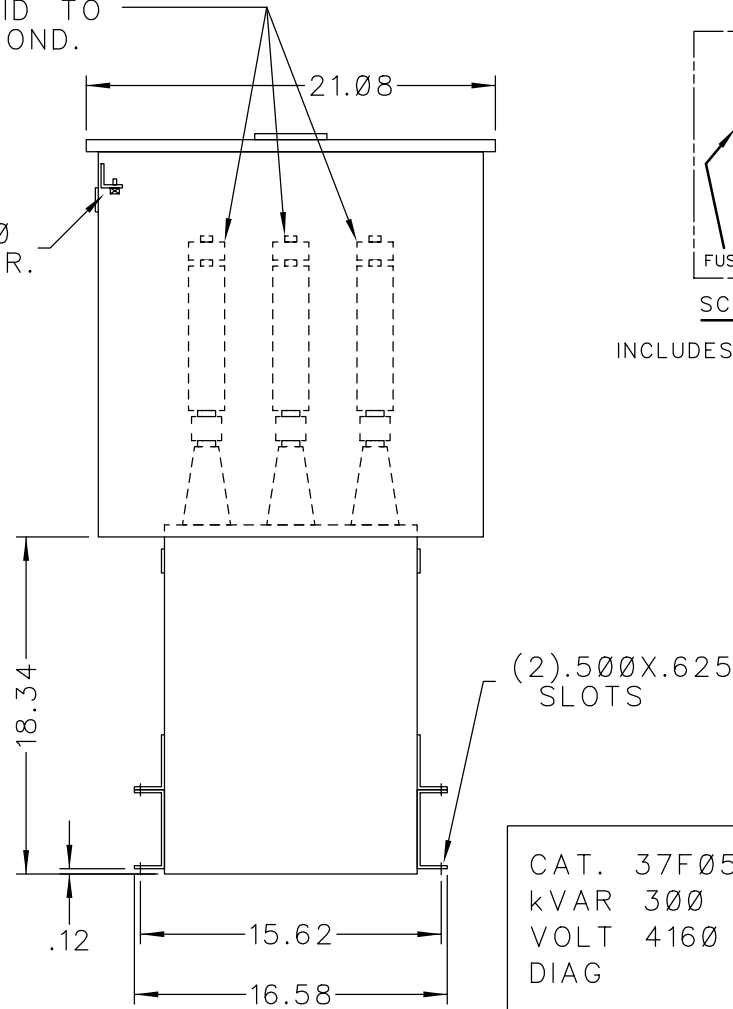


101N140  
LOCATE ON  
CENTER OF  
COVER

SOLDERLESS CONN.  
FOR #10 SOLID TO  
#4 STR'D COND.



.25-20  
GRD SCR.




SCHEMATIC DIAGRAM

INCLUDES DISCHARGE RESISTORS

CAT. 37F0523442 SER.NO.	
kVAR 300	Hz 60 Ph 3
VOLT 4160	CONN. DELTA
DIAG	
GEH-2711	
NP220452	

NOTE:  
ADD "037" SUFFIX TO  
CATALOG NO. FOR  
CSA LABELED PRODUCT.

 CAPACITOR & POWER PROTECTION FORT EDWARD, N.Y., U.S.A.	SIZE <b>A</b>	APPROX. WT 114 LBS
	DRAWN JCozzens ISSUED 7-30-97	JULY 23, 1997 SCALE

**OUTLINE**  
**37F0523442**