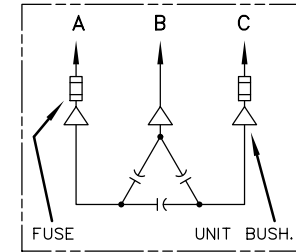
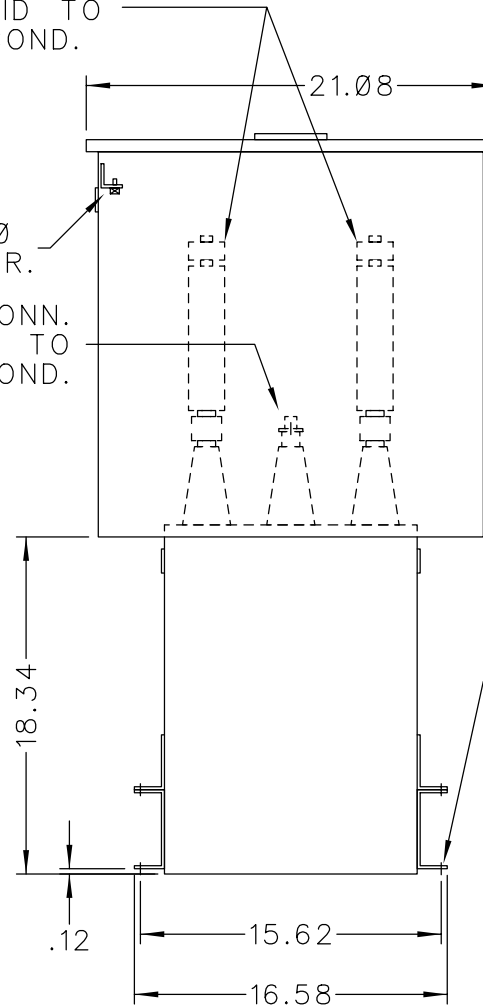


SOLDERLESS CONN.  
FOR #10 SOLID TO  
#4 STR'D COND.

.25-20  
GRD SCR.

SOLDERLESS CONN.  
FOR #10 SOLID TO  
#2 STR'D COND.




SCHEMATIC DIAGRAM

INCLUDES DISCHARGE RESISTORS

CAT. 37F0526428 SER.NO.  
kVAR 275 Hz 60 Ph 3  
VOLT 4800 CONN. DELTA  
DIAG  
NP220452  
GEH-2711

NOTE:  
ADD "037" SUFFIX TO  
CATALOG NO. FOR  
CSA LABELED PRODUCT.

 CAPACITOR & POWER PROTECTION FORT EDWARD, N.Y., U.S.A.	DRAWN JCozzens	JULY 30, 1997	SIZE <b>A</b>	APPROX.WT 114 LBS
	ISSUED	SCALE	SHEET 2	DISTR TO

OUTLINE  
37F0526428