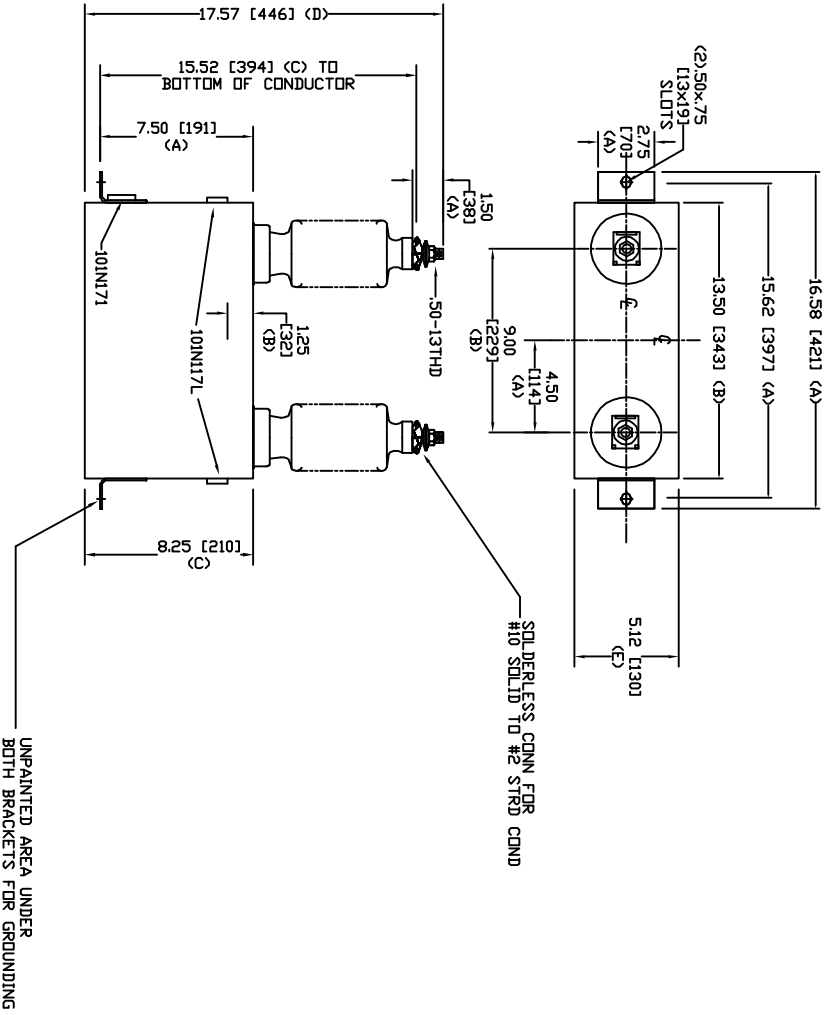



SIZE	DWG NO	SHT	REV
A	SIL203WC28	2	0
REV	DESCRIPTION	DATE	APPROVED
0	New	2/16/2006	



TOL	In.	mm
A	.06	1.5
B	.12	3.0
C	.18	4.6
D	.25	6.4
E	+.5/-1	+13/-25

4160 V 1 PH 95 KV/BIL
 50 KVAR 60 HZ
 CAT. SIL203WC28
 1.13 GAL
 MFG DATE
 101N171 READ GEH-2743


GE ENERGY
FORT EDWARD, N.Y., U.S.A.

DRAWN	ACAD VBA	DATE	4/1/2010
ISSUED	RAH	DATE	4/1/2010

SIZE **A** WEIGHT 28.2 lbs 12.8 kg
 SCALE
OUTLINE
SIL203WC28

SHEET	2	TOTAL	3
-------	---	-------	---