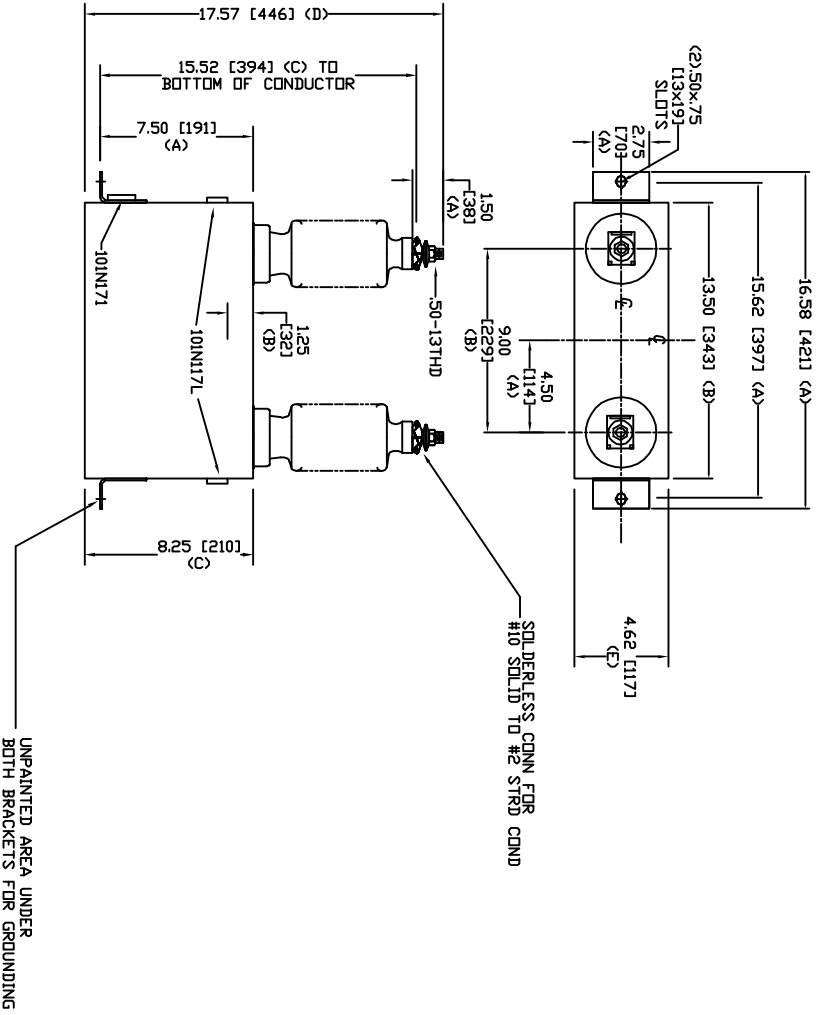


SIZE	DWG. NO.	SHT	REV
A	S1L211WC10	2	0
REV	DESCRIPTION	DATE	APPROVED
0	New	4/7/2006	



TOL	in.	mm
A	.06	1.5
B	.12	3.0
C	.18	4.6
D	.25	6.4
E	+.5/-1	+13/-25

13800 V 1 PH 95 KV/BIL
 50 KVAR 60 HZ
 CAT. S1L211WC10
 1.01 GAL
 MFG DATE
 101N171 READ GEH-2743

INDUSTRIAL SYSTEMS FORT EDWARD, N.Y., U.S.A.		SIZE	A
DRAWN	ACAD VBA	DATE	9/22/2008
ISSUED	RAH	DATE	9/22/2008
WEIGHT		11.6 kg	
25.6 lbs			
OUTLINE S1L211WC10		SHEET	2
		CQNT	3