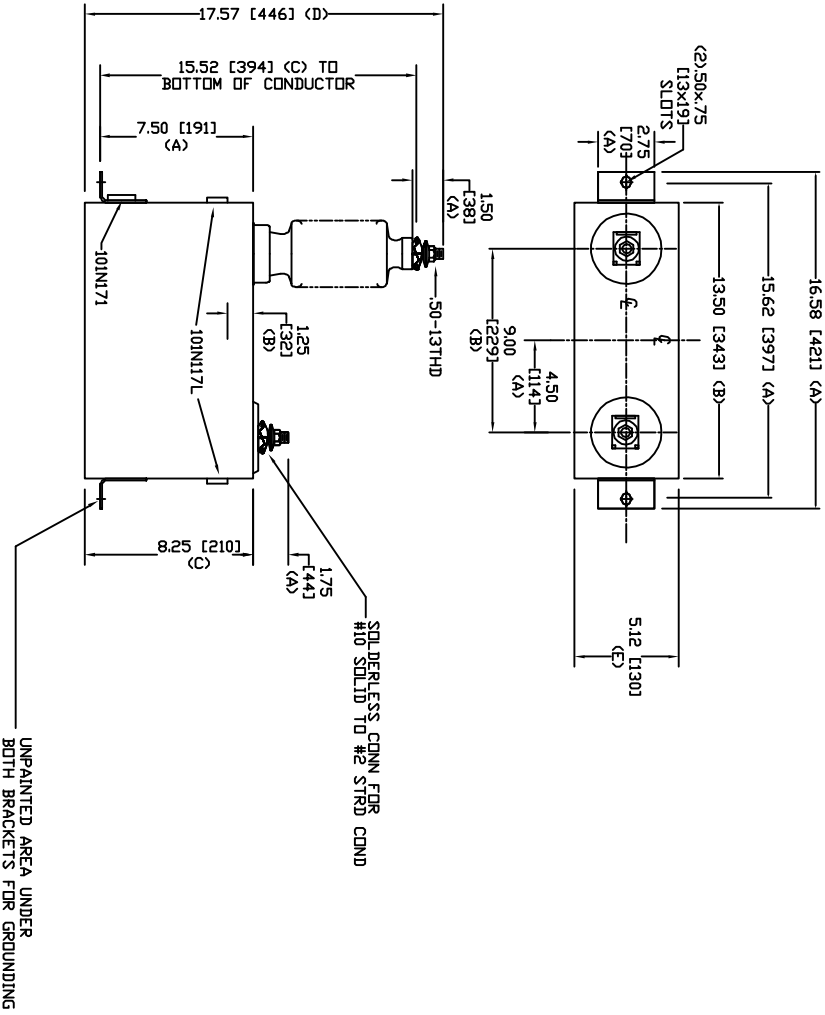


SIZE	DWG. NO.	SHT	REV
A	SIL223WC28	2	0
REV	DESCRIPTION	DATE	APPROVED
0	New	2/16/2006	



TOL	In.	mm
A	.06	1.5
B	.12	3.0
C	.18	4.6
D	.25	6.4
E	+.5/-1	+13/-25

4160 V 1 PH 95 KV/BIL
 50 KVAR 60 HZ
 CAT. SIL223WC28
 1.13 GAL
 MFG DATE
 101N171 READ GEH-2743

GE ENERGY FORT EDWARD, N.Y., U.S.A.		SIZE	A
DRAWN	ACAD VBA	DATE	4/1/2010
ISSUED	RAH	DATE	4/1/2010
WEIGHT 28.3 lbs 12.9 kg		SCALE A	
OUTLINE SIL223WC28		SHEET	2
DISTR. TO 201		CGNT	3