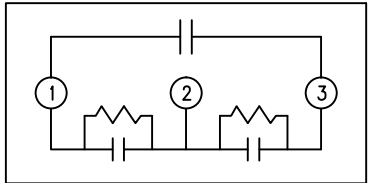
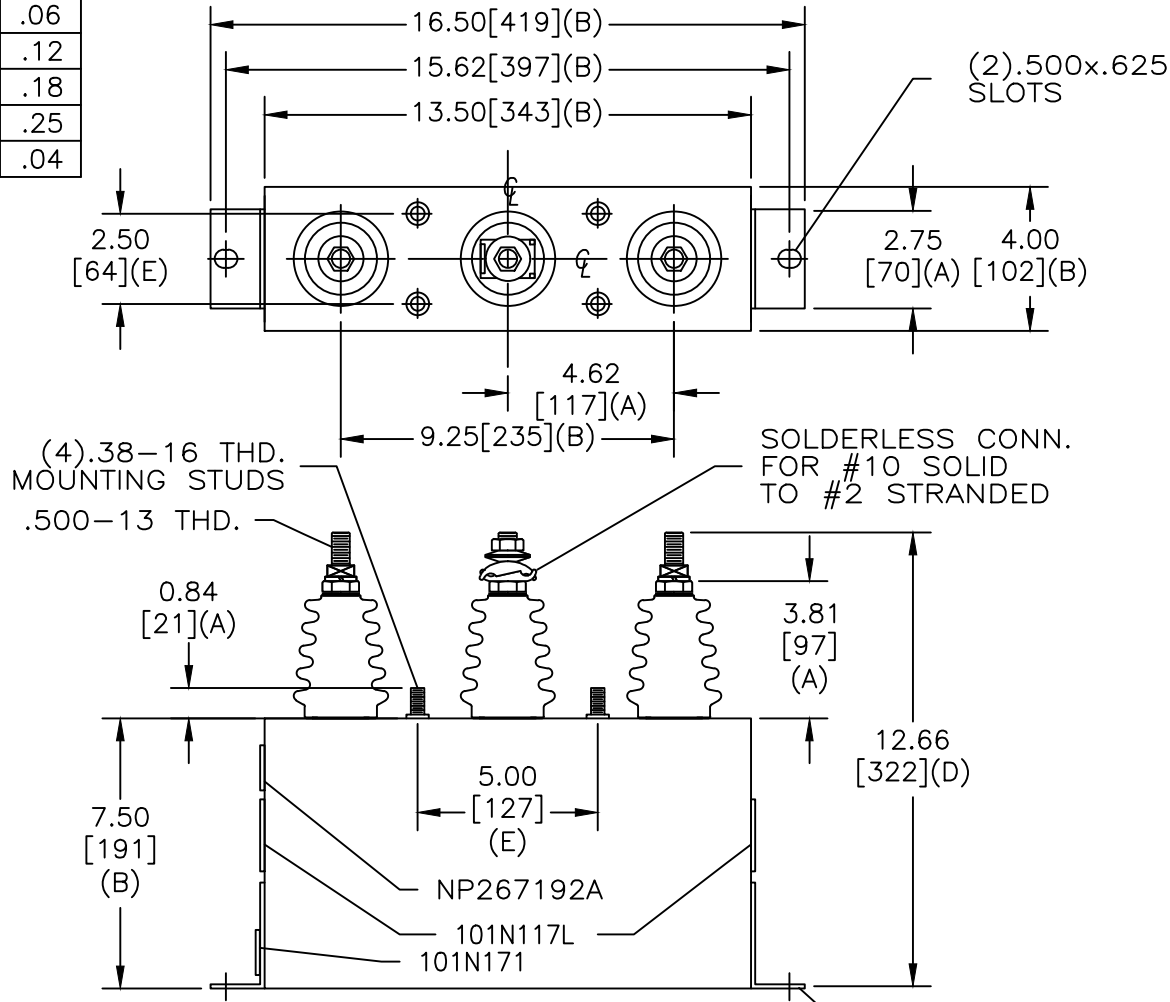


SIZE A	DWG NO 51L303WS60	SHT 2	REV 2
REV 2	DESCRIPTION UPDATE BUSHINGS	DATE 5/14/2013	APPROVED JBC

TOL	+/-
A	.06
B	.12
C	.18
D	.25
E	.04



SCHEMATIC DIAGRAM - 304

DELTA CONN		
4800 V	3 PH	60 kVBIL
50 KVAR	60 Hz	
CAT 51L303WS60	SN	
.86 GAL.		
MFG DATE		
101N171	READ GEH- 2743	

* UP TO +.50 [13] CASE BULGE

MAX. TERMINAL TIGHTENING TORQUE 15 FT-LBS

NP267192A

GE ENERGY FORT EDWARD, N.Y., U.S.A.		SIZE A
DRAWN E. McGinn	DATE JAN 10, 1997	SCALE
ISSUED	DATE JAN 15, 1997	

OUTLINE
51L303WS60

SHEET 2 CONT ON 3

DISTR. TO