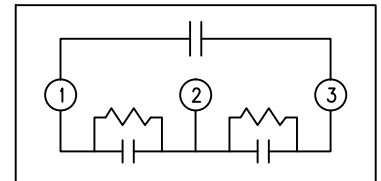
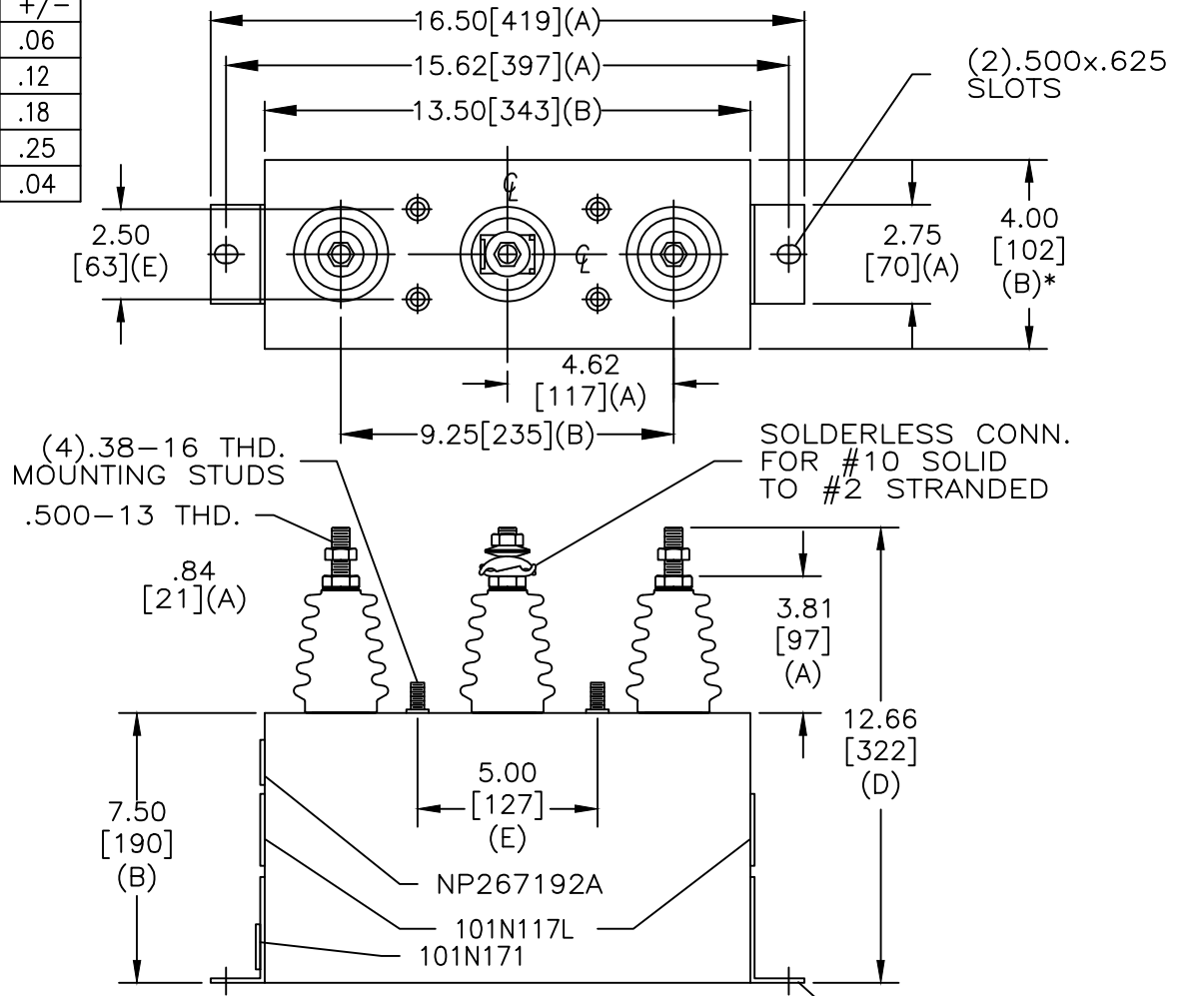


SIZE A	DWG NO 52L301WS60	SHT 2	REV 3
REV 3	DESCRIPTION UPDATE FLUID LABEL	DATE 8/13/2013	APPROVED JBC

TOL	+/-
A	.06
B	.12
C	.18
D	.25
E	.04



SCHEMATIC DIAGRAM - 304

DELTA CONN.		
2400V	3 PH	60 kVBIL
25	KVAR	60 Hz
CAT	52L301WS60	SN
	.88 GAL.	
	MFG DATE	
101N171	READ	GEH- 2743

* UP TO +.50[13] CASE BULGE

MAX. TERMINAL TIGHTENING TORQUE 15 FT-LBS

NP267192A

GE ENERGY FORT EDWARD, N.Y., U.S.A.		SIZE A
DRAWN	E. McGinn	DATE APR. 4, 1997
ISSUED		DATE 4-23-97

OUTLINE 52L301WS60		SHEET 2	CONT ON 3
-----------------------	--	------------	--------------

DISTR. TO