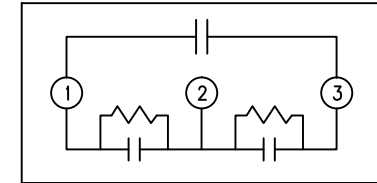
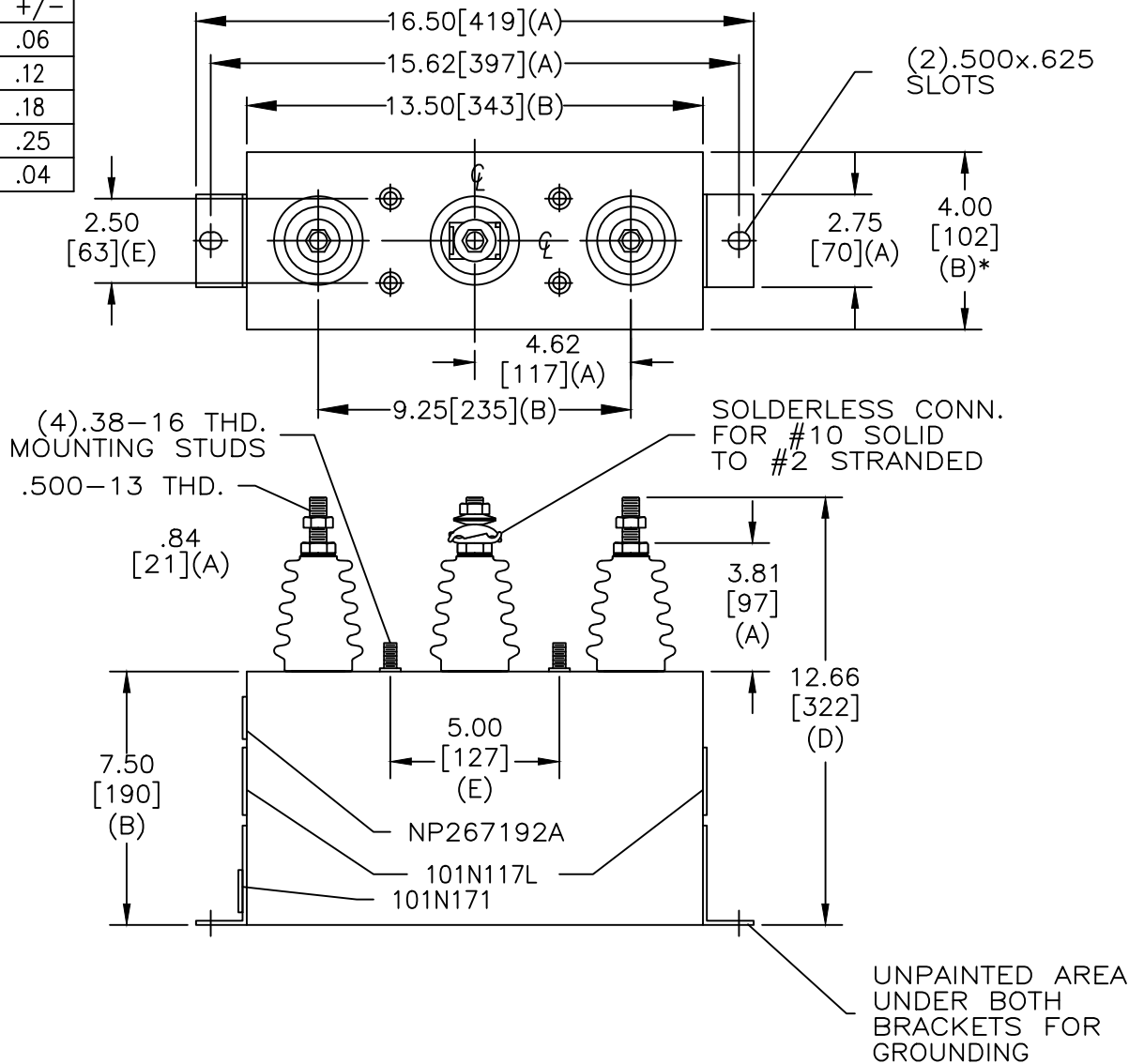


TOL	+/-
A	.06
B	.12
C	.18
D	.25
E	.04

SIZE A	DWG NO 51L302WS60	SHT 2	REV 2
REV 2	DESCRIPTION UPDATE FLUID LABEL	DATE 8/13/2013	APPROVED JBC



SCHEMATIC DIAGRAM - 304

DELTA CONN.		
4160V	3 PH	60 kVBIL
25	KVAR	60 Hz
CAT	52L302WS60	SN
.88 GAL.		
MFG DATE		
101N171	READ GEH- 2743	

* UP TO +.50 [13] CASE BULGE

MAX. TERMINAL TIGHTENING TORQUE 15 FT-LBS

NP267192A

GE ENERGY FORT EDWARD, N.Y., U.S.A.	SIZE A	OUTLINE 52L302WS60
	DRAWN E. McGinn DATE MAY 14, 1997	
ISSUED DATE 4-14-97	SCALE	DISTR. TO