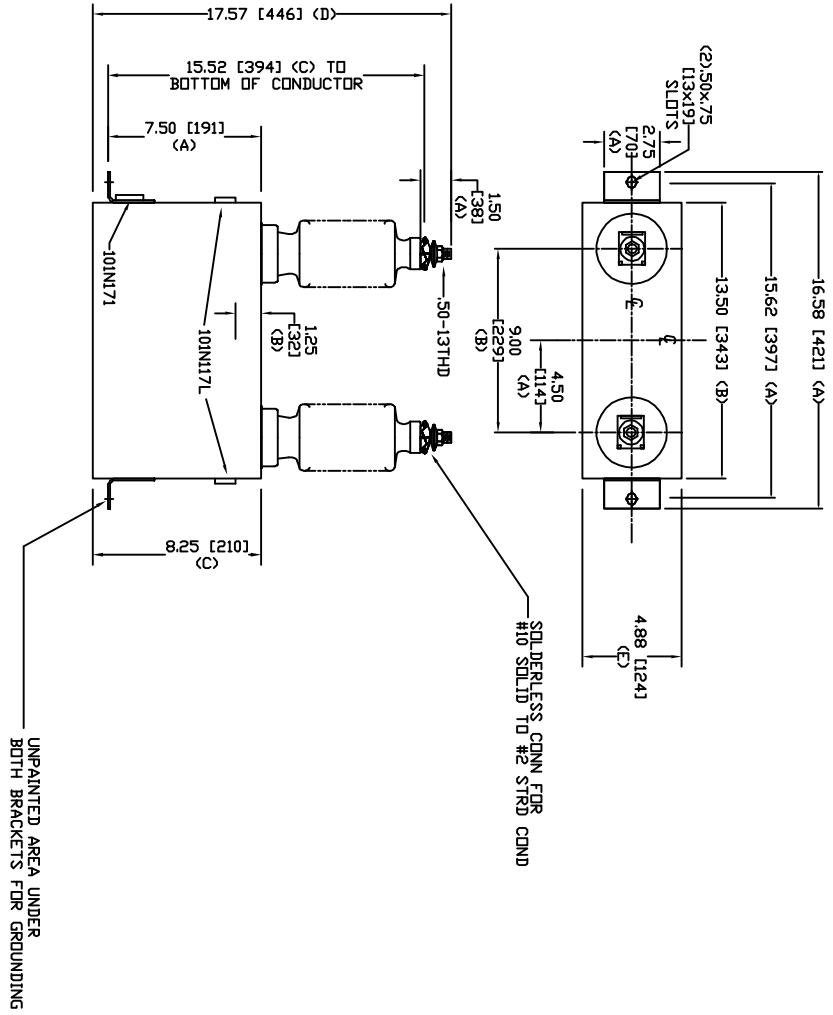


SIZE	DWG. NO.	SHT	REV
A	S4L201WC62	2	0
REV	DESCRIPTION	DATE	APPROVED
0	New	5/5/2005	



TOL	in.	mm
A	.06	1.5
B	.12	3.0
C	.18	4.6
D	.25	6.4
E	+.5/-1	+13/-25

2400 V 1 PH 95 KV BIL
 100 KVAR 60 HZ
 CAT. S4L201WC62
 1.05 GAL
 MFG DATE
 101N171 READ GEH-2743
 12' Creep, 95 KV BIL Bushing

GE ENERGY FORT EDWARD, N.Y., U.S.A.		SIZE	A
DRAWN	ACAD VBA	DATE	5/20/99
ISSUED	RAH	DATE	5/20/99
WEIGHT 29.7 lbs 13.5 kg		SCALE A	
OUTLINE S4L201WC62		SHEET	2
DISTR. TO 201		CGNT	3