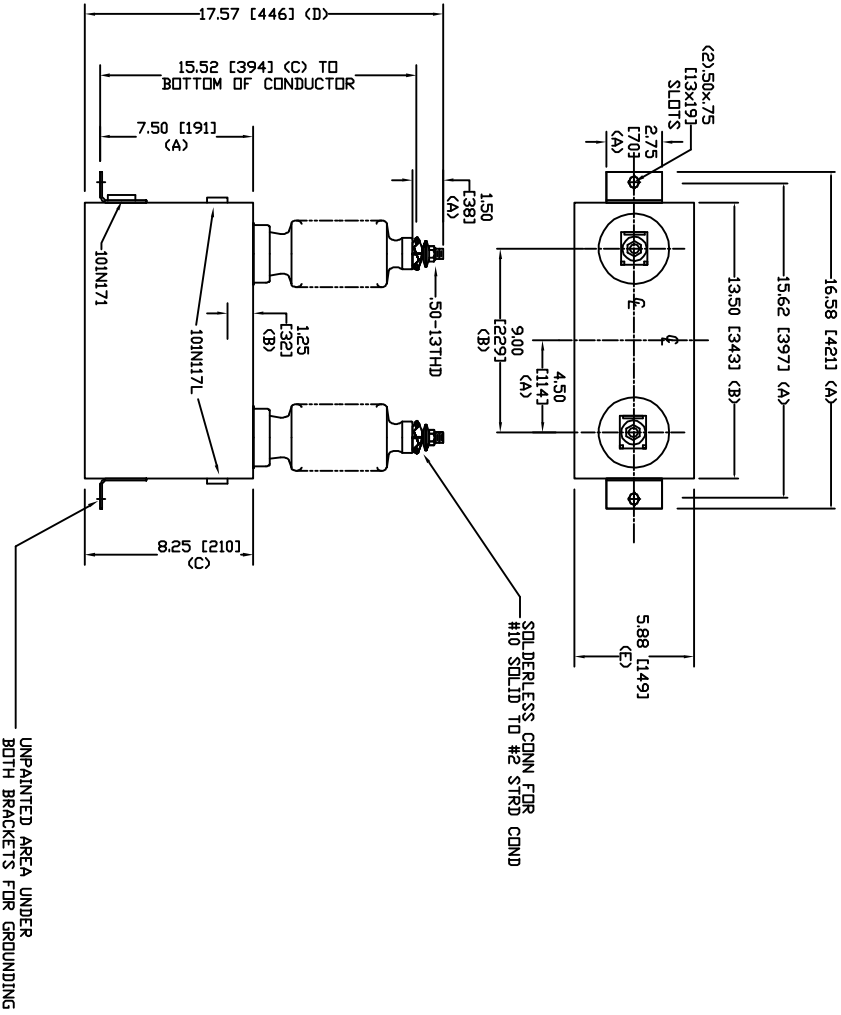


SIZE	DWG. NO.	SHT	REV
A	S4L203WC10	2	0
REV	DESCRIPTION	DATE	APPROVED
0	New	6/9/2005	



TOL	in.	mm
A	.06	1.5
B	.12	3.0
C	.18	4.6
D	.25	6.4
E	+.5/-1	+13/-25

4160 V 1 PH 95 KV/BIL
 100 KVAR CAT. S4L203WC10
 1.24 GAL MFG DATE
 101N171 READ GEH-2743
 12' Creep, 95 KV/BIL Bushing

GE ENERGY
FORT EDWARD, N.Y., U.S.A.

SIZE	WEIGHT	OUTLINE S4L203WC10
A	34.4 lbs 15.6 kg	
DRAWN	ACAD VBA	SHEET 2
ISSUED	RAH	CGNT 3
DATE	9/18/2009	
DATE	9/18/2009	