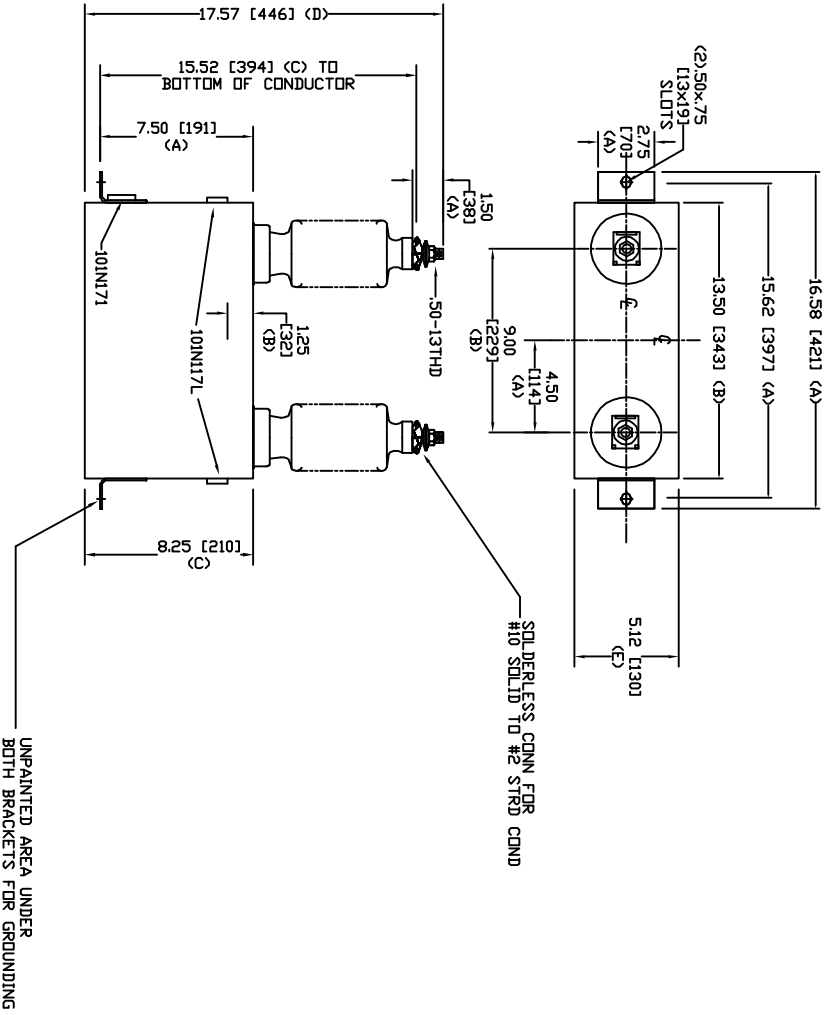


SIZE	DWG. NO.	SHT	REV
A	54L203WC60	2	0
REV	DESCRIPTION	DATE	APPROVED
0	New	6/9/2005	



TOL	in.	mm
A	.06	1.5
B	.12	3.0
C	.18	4.6
D	.25	6.4
E	+.5/-1	+13/-25

4160 V 1 PH 95 KV/BIL
 100 KVAR 60 Hz
 CAT. 54L203WC60
 108 GAL
 MFG DATE
 101N171 READ GEH-2743
 12" Creep, 95 KV/BIL Bushing

GE ENERGY FORT EDWARD, N.Y., U.S.A.		SIZE	A
DRAWN	ACAD VBA	WEIGHT	31.1 lbs
ISSUED	RAH	SCALE	14.1 kg
DATE	2/12/2010	OUTLINE 54L203WC60	
DATE	2/12/2010		
		SHEET	2
		CGNT	3