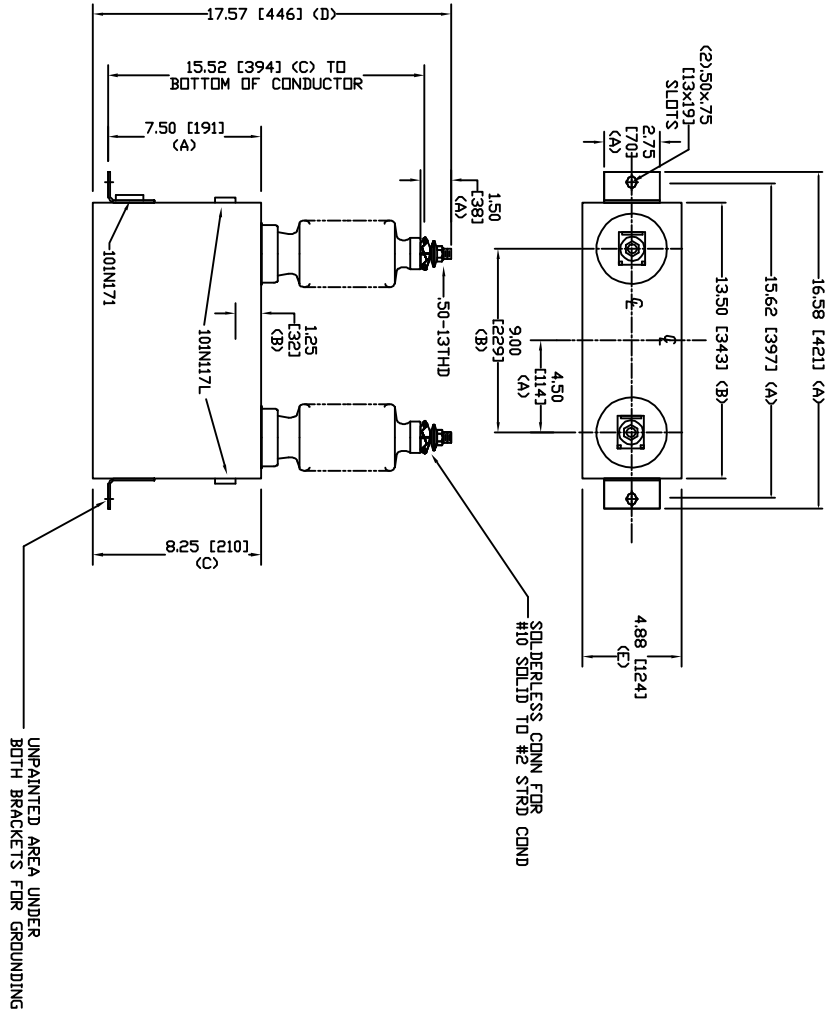


SIZE	DWG. NO.	SHT	REV
A	54L206WC60	2	0
REV	DESCRIPTION	DATE	APPROVED
0	New	1/27/2006	



TOL	In.	mm
A	.06	1.5
B	.12	3.0
C	.18	4.6
D	.25	6.4
E	+.5/-1	+13/-25

7200 V 1 PH 95 KV BIL
 100 KVAR 60 Hz
 CAT. 54L206WC60
 1.04 GAL
 MFG DATE
 101N171 READ GEH-2743

12' Creep, 95 KV BIL Bushing

INDUSTRIAL SYSTEMS FORT EDWARD, N.Y., U.S.A.		SIZE	A
DRAWN	ACAD VBA	DATE	5/6/2008
ISSUED	RAH	DATE	5/6/2008
WEIGHT		26.8 lbs	
SCALE		A	
12.2 kg		54L206WC60	
SHEET 2		CGNT 3	