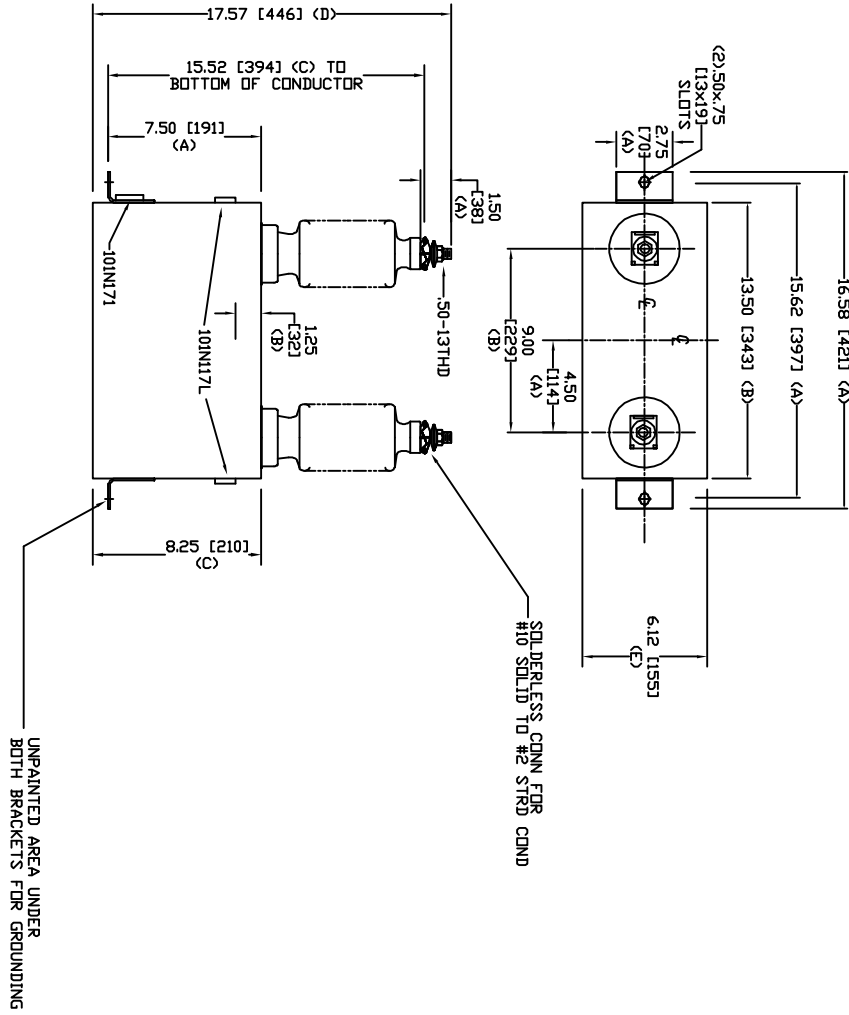


SIZE	DWG. NO.	SHT	REV
A	S4L207WC10	2	0
REV	DESCRIPTION	DATE	APPROVED
0	New	12/7/2005	



TOL	in.	mm
A	.06	1.5
B	.12	3.0
C	.18	4.6
D	.25	6.4
E	+.5/-1	+13/-25

7620 V 1 PH 95 KV/BIL
 100 KVAR 60 Hz
 CAT. S4L207WC10
 1.29 GAL
 MFG DATE
 101N171 READ GEH-2743

GE ENERGY FORT EDWARD, N.Y., U.S.A.		SIZE A
DRAWN ACAD VBA	DATE 10/7/2010	WEIGHT 32.9 lbs 15 kg
ISSUED RAH	DATE 10/7/2010	SCALE A
OUTLINE S4L207WC10		SHEET 2 CNT 3