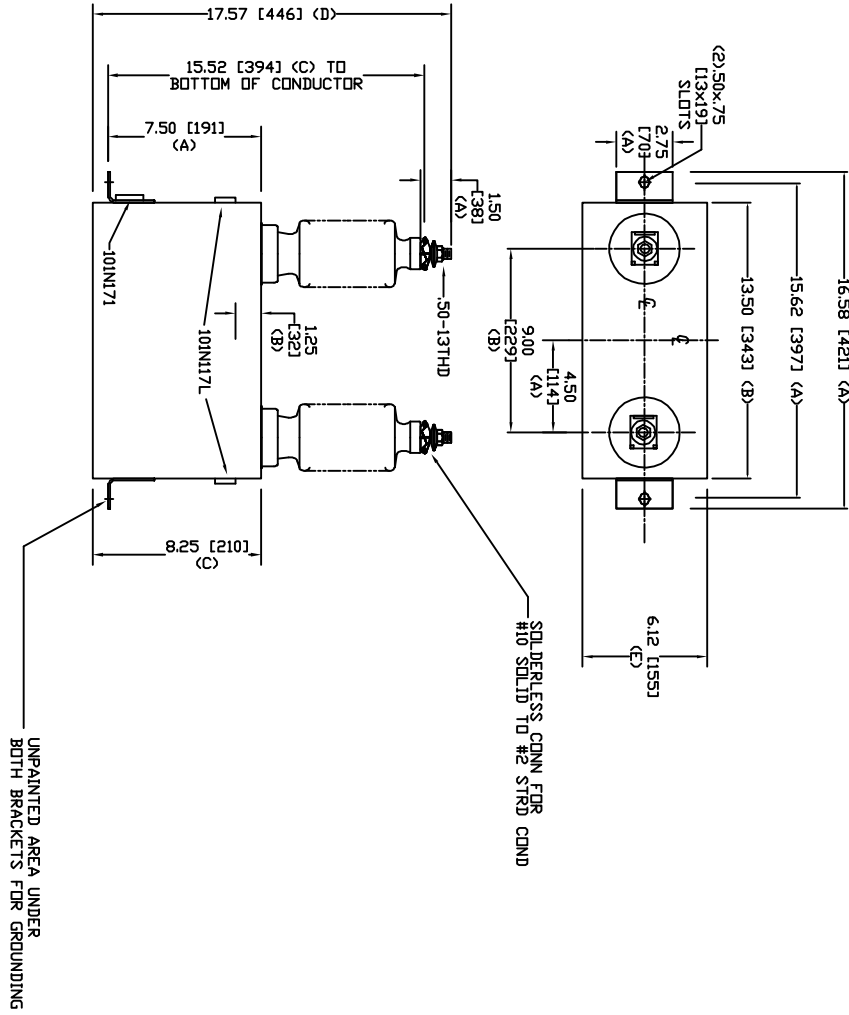


SIZE	DWG. NO.	SHT	REV
A	S4L208WC10	2	0
REV	DESCRIPTION	DATE	APPROVED
0	New	8/17/2010	



TOL	in.	mm
A	.06	1.5
B	.12	3.0
C	.18	4.6
D	.25	6.4
E	+.5/-1	+13/-25

7960 V 1 PH 95 KV/BIL
 100 KVAR 60 Hz
 CAT. S4L208WC10
 1.31 GAL
 MFG DATE
 101N171 READ GEH-2743

GE ENERGY FORT EDWARD, N.Y., U.S.A.		SIZE	A
DRAWN	ACAD VBA	WEIGHT	32.7 lbs
ISSUED	RAH	SCALE	14.9 kg
DATE	8/17/2010	OUTLINE S4L208WC10	
DATE	8/17/2010		
SHEET	2	CNT	3