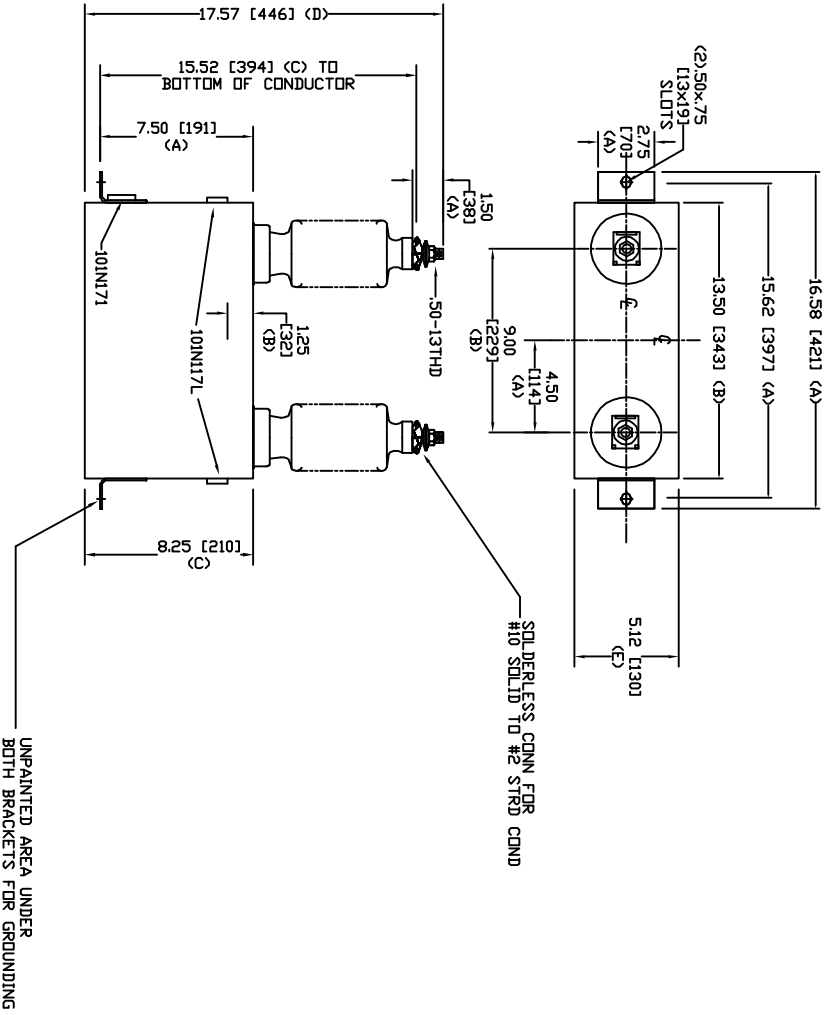


SIZE	DWG. NO.	SHT	REV
A	54L210WC60	2	0
REV	DESCRIPTION	DATE	APPROVED
0	New	2/23/2006	



TOL	in.	mm
A	.06	1.5
B	.12	3.0
C	.18	4.6
D	.25	6.4
E	+.5/-1	+13/-25

13280 V 1 PH 95 KV BIL  
 100 KVAR 60 Hz  
 CAT. 54L210WC60  
 1.13 GAL  
 MFG DATE  
 101N171 READ GEH-2743  
 12" Creep, 95 KV BIL Bushing

<b>GE ENERGY</b> <b>FORT EDWARD, N.Y., U.S.A.</b>		<b>SIZE</b> <b>A</b>
<b>DRAWN</b> ACAD VBA	<b>DATE</b> 3/31/2010	<b>WEIGHT</b> 28.3 lbs 12.9 kg
<b>ISSUED</b> RAH	<b>DATE</b> 3/31/2010	<b>SCALE</b> A
<b>OUTLINE</b> 54L210WC60		<b>SHEET</b> 2 <b>CGNT</b> 3