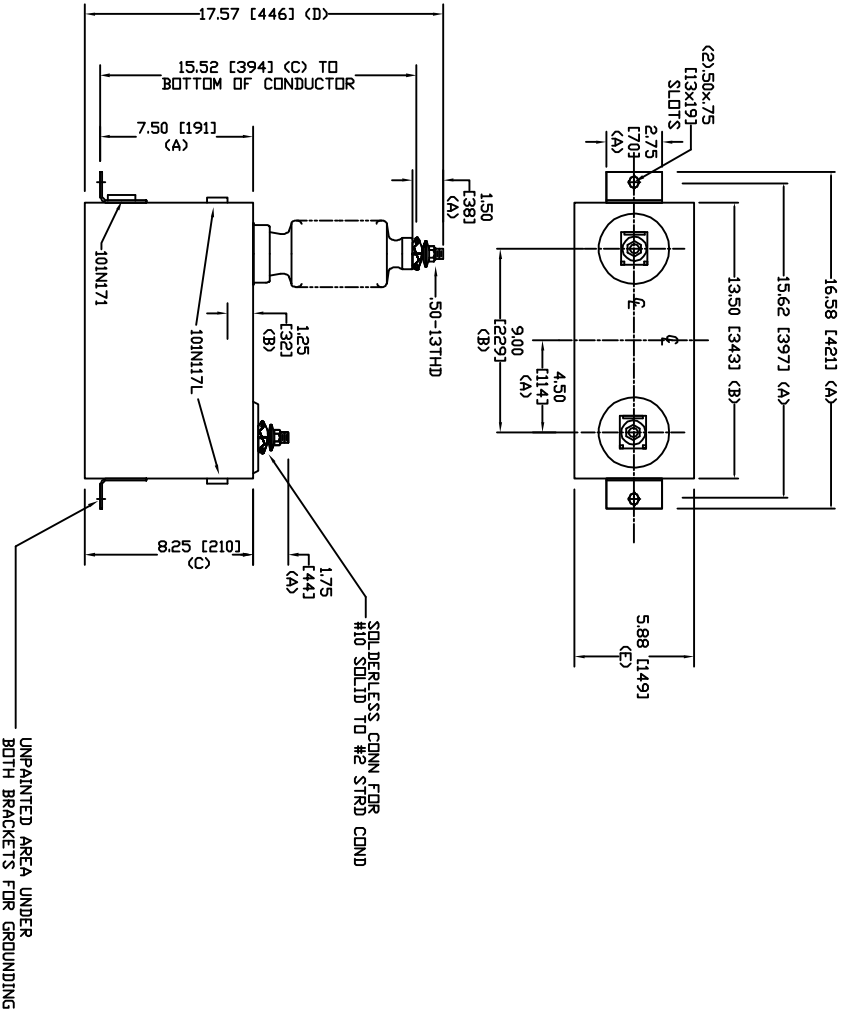


SIZE	DWG. NO.	SHT	REV
A	S4L223WC10	2	0
REV	DESCRIPTION	DATE	APPROVED
0	New	6/9/2005	



TOL	in.	mm
A	.06	1.5
B	.12	3.0
C	.18	4.6
D	.25	6.4
E	+.5/-1	+13/-25

4160 V 1 PH 95 KV/BIL  
 100 KVAR 60 HZ  
 CAT. S4L223WC10  
 1.24 GAL  
 MFG DATE  
 101N171 READ GEH-2743  
 12' Creep, 95 KV/BIL Bushing

<b>GE ENERGY</b> <b>FORT EDWARD, N.Y., U.S.A.</b>		SIZE	A
DRAWN	ACAD VBA	DATE	9/18/2009
ISSUED	RAH	DATE	9/18/2009
<b>WEIGHT</b> 31.5 lbs 14.3 kg		<b>SCALE</b> A	
<b>OUTLINE</b> S4L223WC10		SHEET	2
DISTR. TO 201		CGNT	3