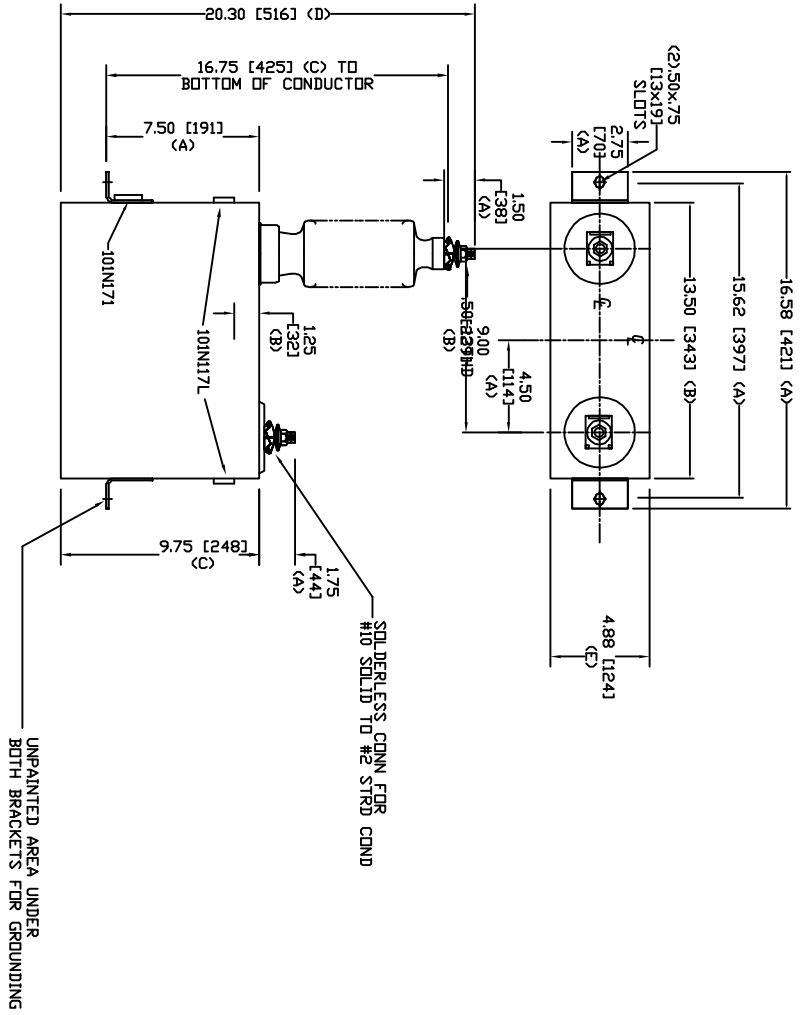


SIZE	DWG. NO.	SHT	REV
A	S4L255WC10	2	0
REV	DESCRIPTION	DATE	APPROVED
0	New	6/11/2007	



TOL	in.	mm
A	.06	1.5
B	.12	3.0
C	.18	4.6
D	.25	6.4
E	+.5/-1	+13/-25

19920 V 1 PH 150 KV/BIL  
 100 KVAR 60 Hz  
 CAT. S4L255WC10  
 1.19 GAL  
 MFG DATE  
 101N171 READ GEH-2743

<b>INDUSTRIAL SYSTEMS</b> FORT EDWARD, N.Y., U.S.A.		SIZE	A	WEIGHT	33.9 lbs 15.4 kg	<b>OUTLINE</b> S4L255WC10	
DRAWN	ACAD VBA	DATE	6/11/2007	SCALE		SHEET	2
ISSUED	RAH	DATE	6/11/2007			CGNT	3