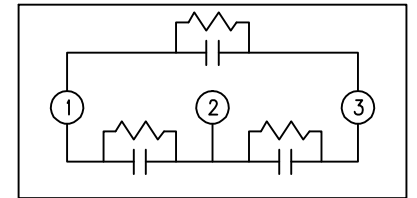
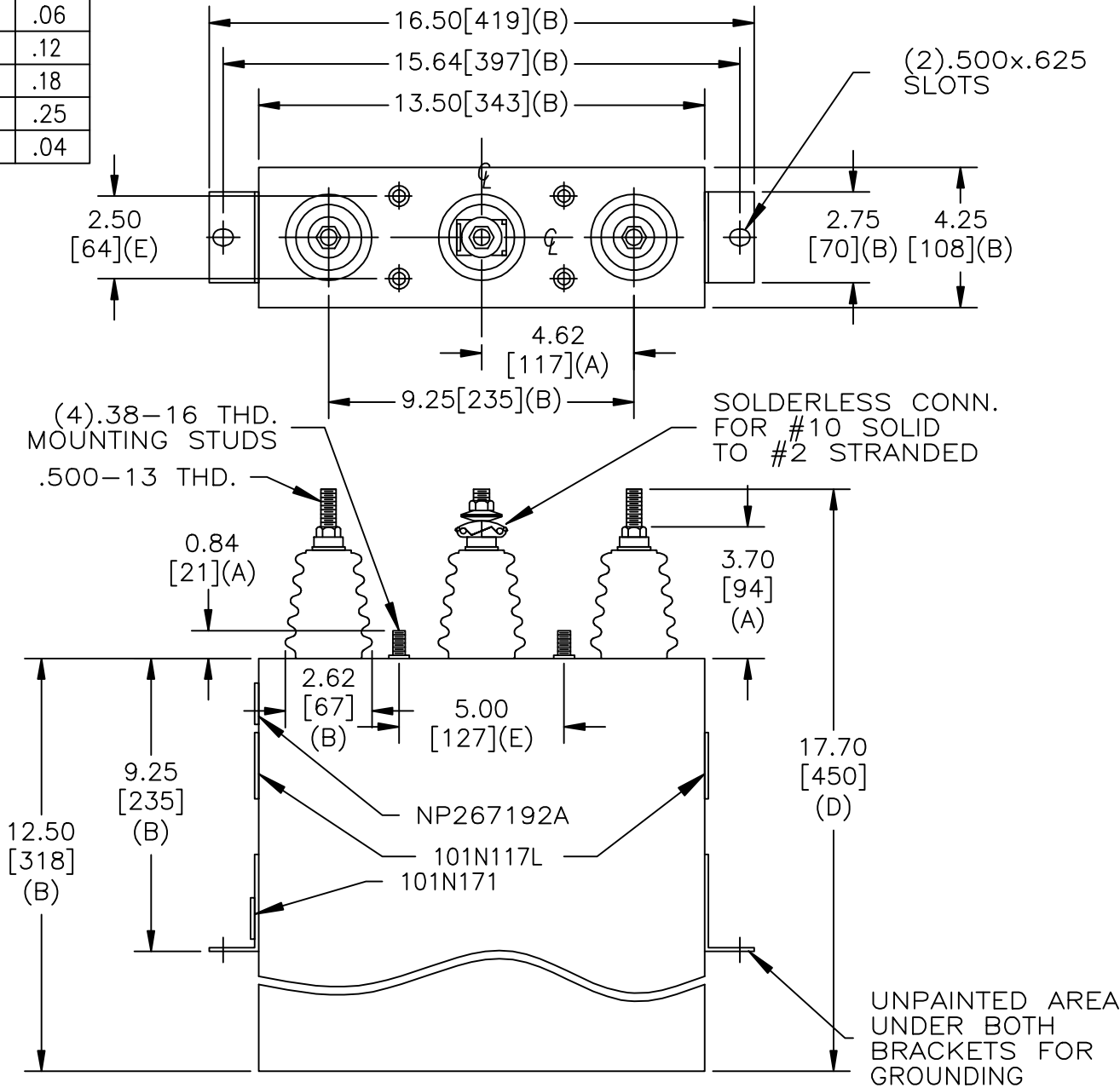


SIZE A	DWG NO 54L309WS60	SHT 2	REV 3
REV 3	DESCRIPTION HZ WAS 50	DATE 5/6/2008	APPROVED BTR

TOL	+/-
A	.06
B	.12
C	.18
D	.25
E	.04



SCHEMATIC DIAGRAM - 302

4160V 3 PH 60 kVBIL
 150 KVAR 60 Hz
 CAT 54L309WS60 SN
 1.13 GAL.
 MFG DATE
 101N171 READ GEH- 2743

* UP TO +.50 [13] CASE BULGE

MAX. TERMINAL TIGHTENING TORQUE
 15 FT-LBS

NP267192A

GE ENERGY FORT EDWARD, N.Y., U.S.A.		SIZE A
DRAWN E. McGinn	DATE 1/10/1997	SCALE
ISSUED	DATE 1/15/1997	

OUTLINE
54L309WS60

SHEET 2 CONT ON 3

DISTR. TO