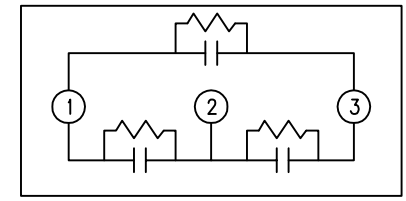
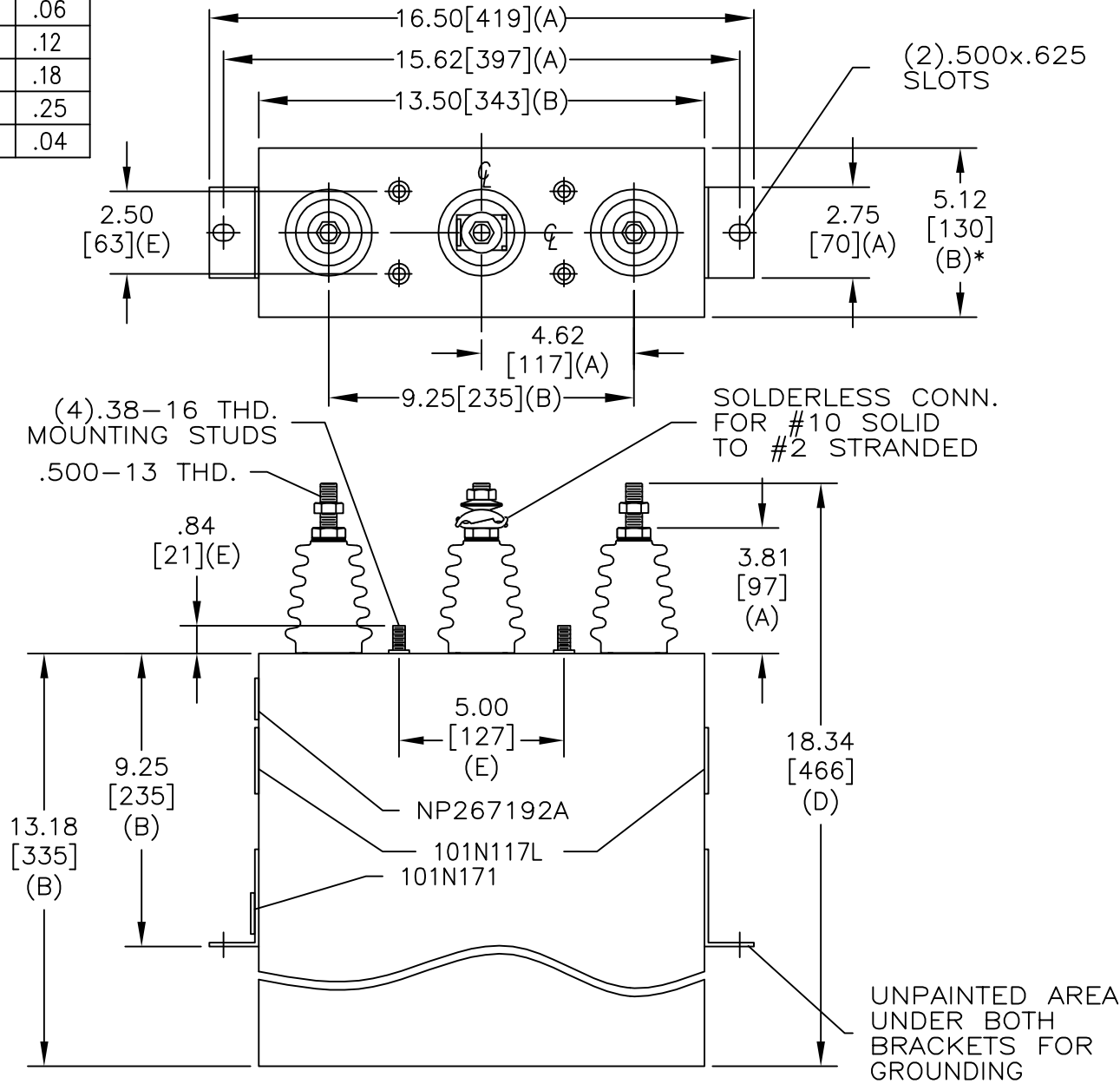


| TOL | +/- |
|-----|-----|
| A | .06 |
| B | .12 |
| C | .18 |
| D | .25 |
| E | .04 |

| | | | |
|-----------|------------------------------|-------------------|-----------------|
| SIZE A | DWG NO 54L313WS60 | SHT 2 | REV 4 |
| REV 4 | DESCRIPTION GALS WAS 1.28 | DATE 12/9/2013 | APPROVED JBC |



SCHEMATIC DIAGRAM - 302

4160 V 3 PH 60 KV BIL
 175 KVAR 60 Hz
 CAT 54L313WS60 SN
 1.4 GAL.
 MFG DATE
 101N171 READ GEH- 2743

* UP TO +.50[13] CASE BULGE

MAX. TERMINAL TIGHTENING TORQUE 15 FT-LBS

NP267192A

| | | |
|--|------------------------|------------------------------|
| GE ENERGY FORT EDWARD, N.Y., U.S.A. | SIZE A | OUTLINE 54L313WS60 |
| | SCALE | |
| DRAWN E. McGinn DATE NOV. 13, 1996 ISSUED DATE 11-13-97 | SHEET 2 CONT ON 3 | DISTR. TO |