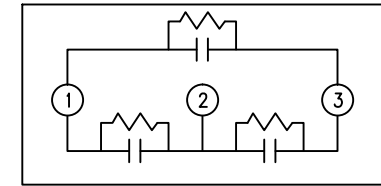
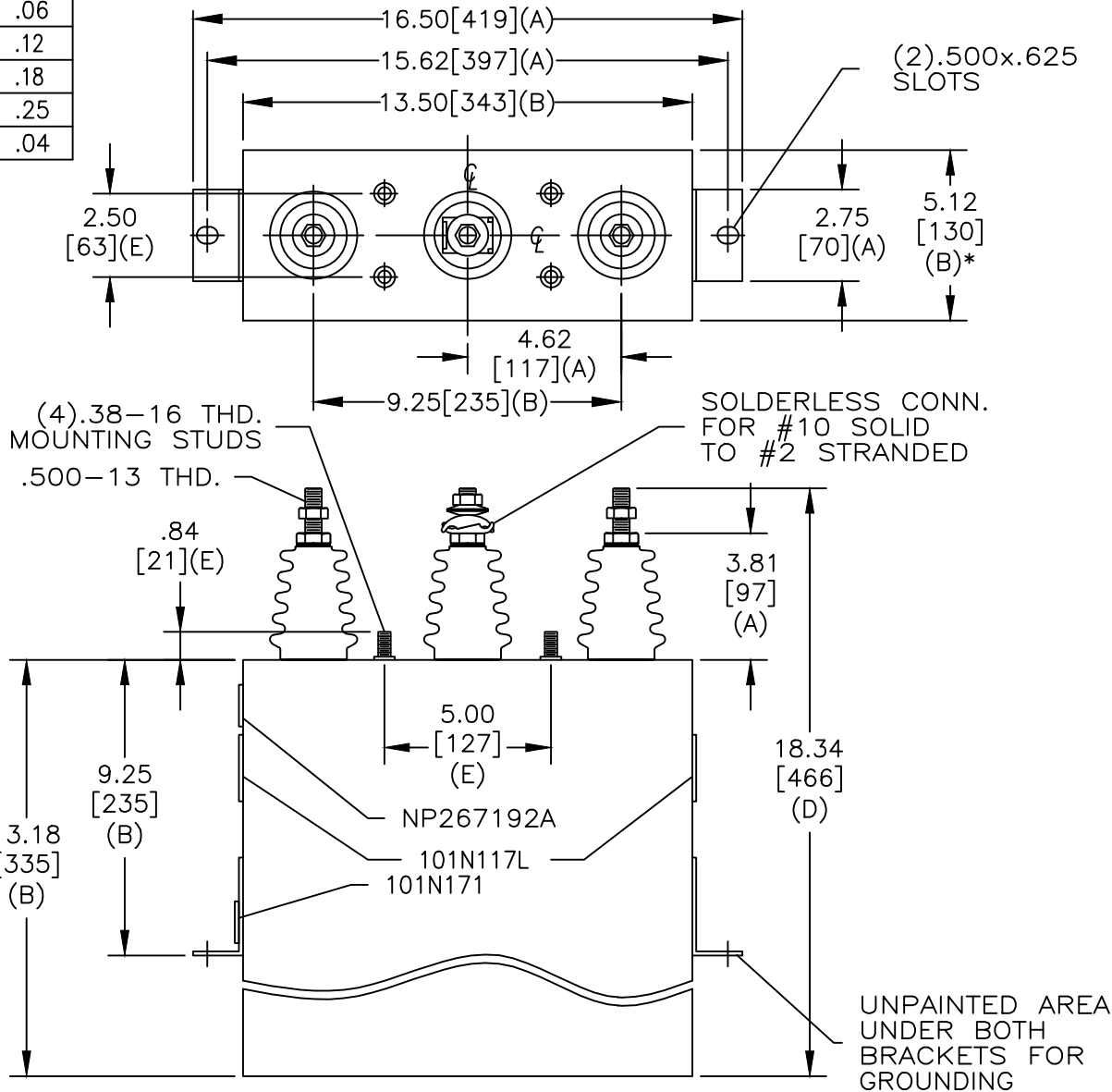


TOL	+/-
A	.06
B	.12
C	.18
D	.25
E	.04

SIZE A	DWG NO 54L317WS60	SHT 2	REV 2
REV 2	DESCRIPTION CASE WAS 4.38"	DATE 9/13/2013	APPROVED JBC



2400 V 3 PH 60 kVBIL
 175 KVAR 60 Hz
 CAT 54L317WS60 SN
 1.4 GAL.
 MFG DATE
 101N171 READ GEH- 2743

* UP TO +.50 [13] CASE BULGE

MAX. TERMINAL TIGHTENING TORQUE 15 FT-LBS

NP267192A

GE ENERGY FORT EDWARD, N.Y., U.S.A.		SIZE A
DRAWN	E. McGinn	DATE 11/12/1996
ISSUED		DATE 11/13/1996

OUTLINE 54L317WS60		SHEET 2	CONT ON 3
-----------------------	--	---------	-----------

DISTR. TO